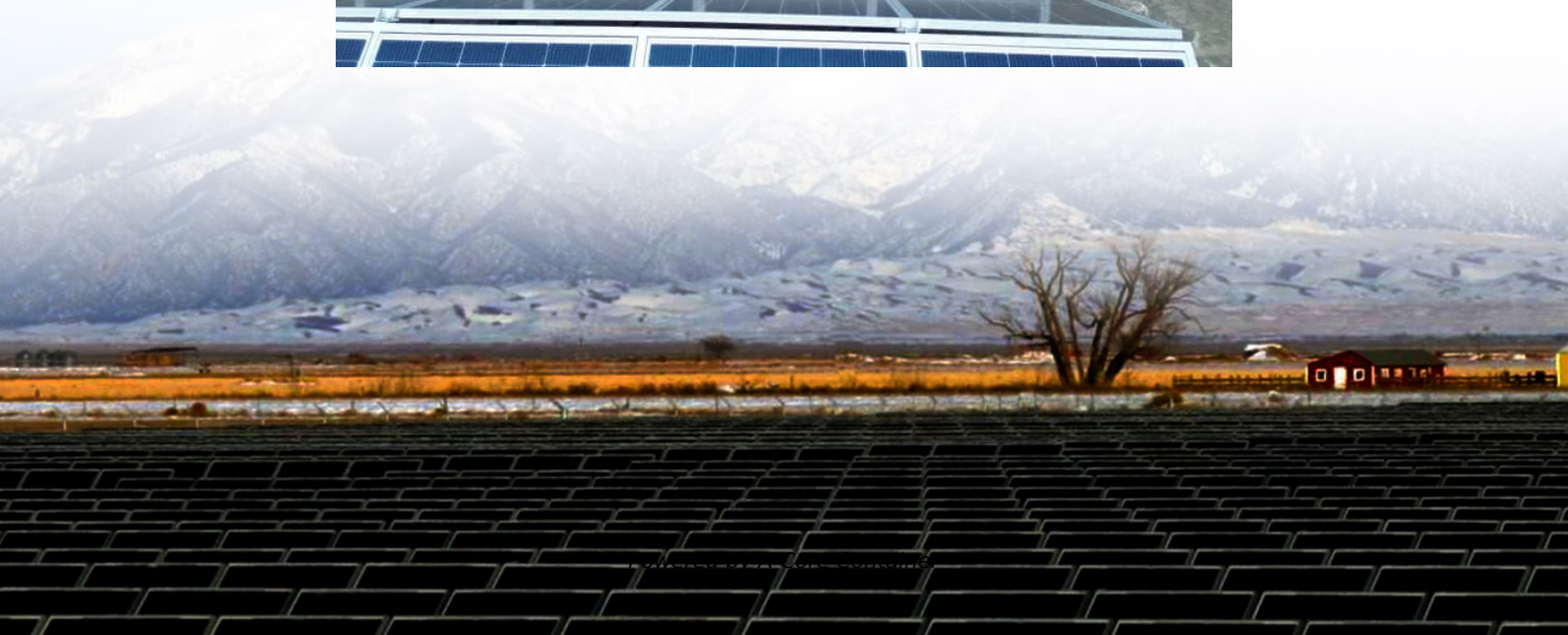


## A-Core Container

# Zinc-bromine flow battery production in Comoros



## Overview

---

What are zinc-bromine flow batteries?

Among the above-mentioned zinc-based flow batteries, the zinc-bromine flow batteries are one of the few batteries in which the anolyte and catholyte are completely consistent. This avoids the cross-contamination of the electrolyte and makes the regeneration of electrolytes simple.

Are zinc-bromine flow batteries suitable for large-scale energy storage?

Zinc-bromine flow batteries (ZFBs) offer great potential for large-scale energy storage owing to the inherent high energy density and low cost. However, practical applications of this technology are hindered by low power density and short cycle life, mainly due to large polarization and non-uniform zinc deposition.

What are the disadvantages of zinc-bromine (znbr) flow batteries?

Zinc-bromine (ZnBr) flow batteries exhibit relatively high energy density, deep discharge capability, and good reversibility (Table 2). The disadvantages include material corrosion, dendrite formation, and relatively low cycle efficiencies compared to traditional batteries, which can limit its applications [12, 35].

Can pvb@zn anodes be used in zinc-bromine flow batteries?

When coupled with PVB@Zn anodes, MnO<sub>2</sub> battery systems exhibited higher CE and longer lifespans compared to batteries using bare Zn anodes. However, more studies are required to investigate the effect and stability of PVB@Zn anodes if this strategy is adopted in zinc-bromine flow batteries.

What are static non-flow zinc-bromine batteries?

Static non-flow zinc-bromine batteries are rechargeable batteries that do not require flowing electrolytes and therefore do not need a complex flow system as shown in Fig. 1 a. Compared to current alternatives, this makes them more

straightforward and more cost-effective, with lower maintenance requirements.

Are zinc-bromine rechargeable batteries suitable for stationary energy storage applications?

Zinc-bromine rechargeable batteries are a promising candidate for stationary energy storage applications due to their non-flammable electrolyte, high cycle life, high energy density and low material cost. Different structures of ZBRBs have been proposed and developed over time, from static (non-flow) to flowing electrolytes.

## Zinc-bromine flow battery production in Comoros

---

### Contact Us

---

For catalog requests, pricing, or partnerships, please visit:  
<https://www.a-core.pl>