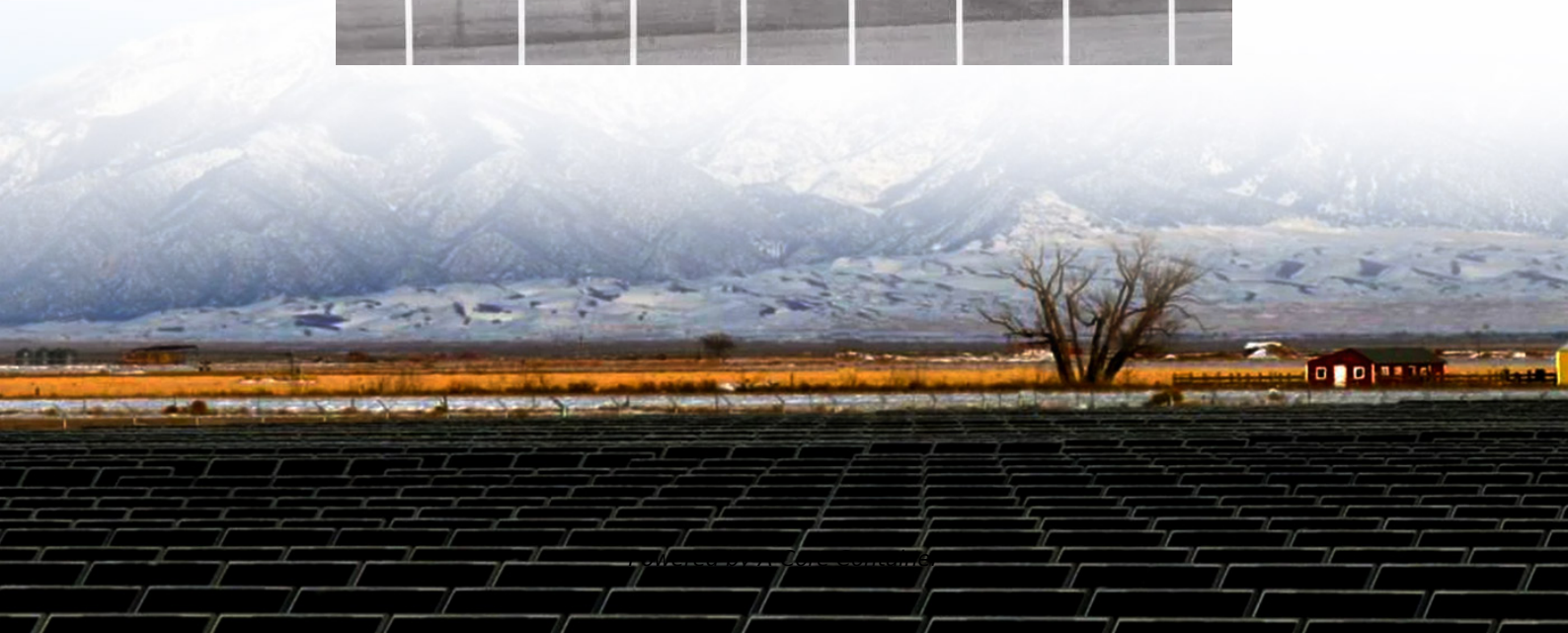
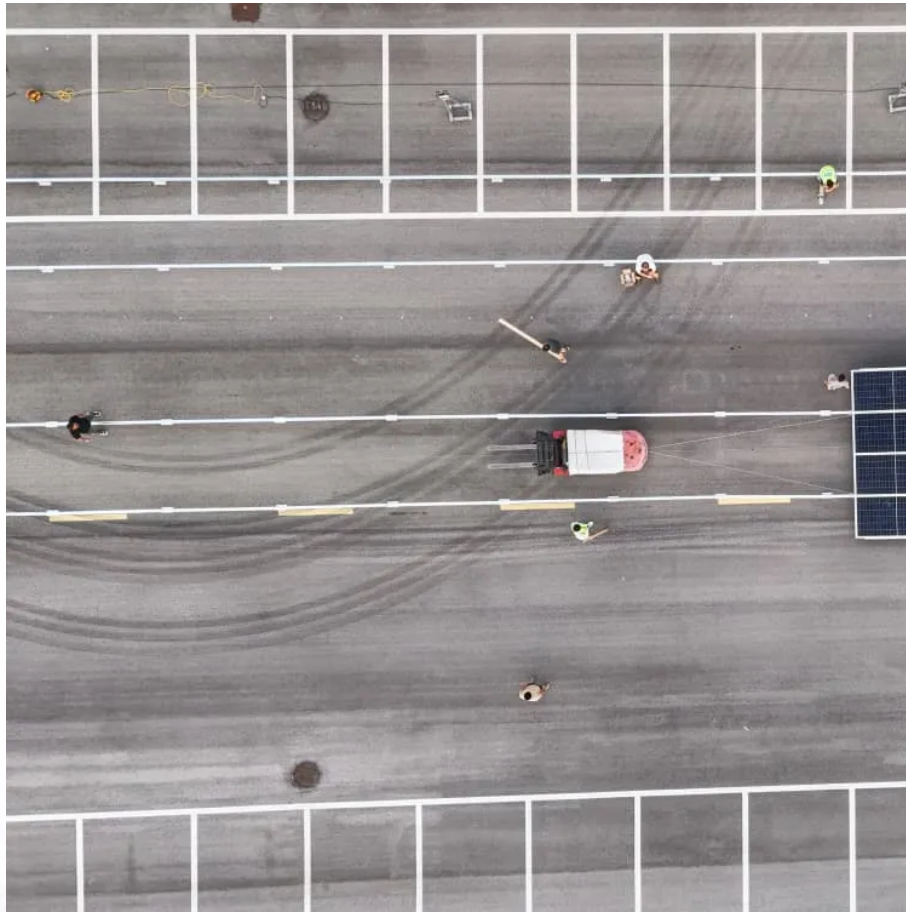


A-Core Container

Working Principle of Outdoor Integrated Base Station



Overview

When the output mains power is cut off, the rectifier module stops working, and the solar energy cannot supply power normally. The system output load is powered by the battery to maintain the normal operation of communication equipment.

When the output mains power is cut off, the rectifier module stops working, and the solar energy cannot supply power normally. The system output load is powered by the battery to maintain the normal operation of communication equipment.

Solar power generation is the use of photovoltaic panels to convert solar energy into electrical energy -48V DC, and then stabilize the load power supply through photovoltaic MPPT modules while charging the battery. When continuous rainy days cause low voltage in the battery, the starting oil.

Main Base Station Equipment Often referred to as the brain center, this includes: Baseband Unit (BBU): Handles baseband signal processing. Remote Radio Unit (RRU): Converts signals to radio frequencies for transmission. Active Antenna Unit (AAU): Integrates RRU and antenna for 5G-era efficiency.

2.

Control Unit: The controller is in charge of the operation of the whole base station. It controls the transmission power, frequency allocation, handovers between different cells and other network management functions. The control unit also connects with the core network central infrastructure.

Soetek's 5G Base Station Power System offers a "one device, plug-and-play" solution. Soetek 5G base station power system solves the problem Simplifying Complexity, Winning in Space and Reliability: Soetek's outdoor telecom power system integrates AC input distribution, multi-level professional.

This document is a guidance of Nova-246 hardware installation for installation personnel, including the preparation of installation tools and supporting materials, the demands for installation environment, installation procedure,

cable connection and power on. Accomplish the installation of the.

The invention discloses a kind of outdoor integrated base stations, including mainframe, main basal base, main basal base includes the outer walls of concrete set of top end opening, the connection pedestal in outer walls of concrete set, pedestal upper end is connected to stretch out outside the.

Working Principle of Outdoor Integrated Base Station

Contact Us

For catalog requests, pricing, or partnerships, please visit:
<https://www.a-core.pl>