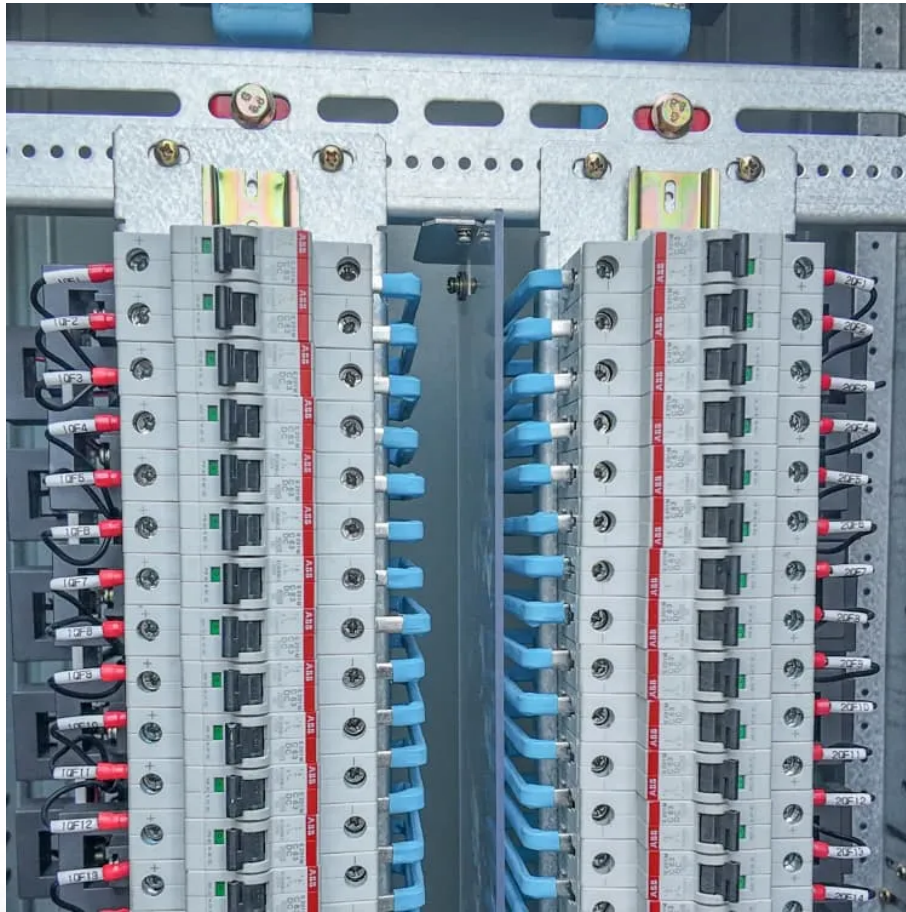


A-Core Container

Will there be voltage when the inverter is stopped



Overview

Yes, the battery inverter still consumes some power when turned off. This is because the pure sine wave inverter needs to keep some circuits and electronic components on standby so that it can start up quickly when needed.

Yes, the battery inverter still consumes some power when turned off. This is because the pure sine wave inverter needs to keep some circuits and electronic components on standby so that it can start up quickly when needed.

The answer is yes, it draws power even when it is turned off. The amount of power your inverters will draw depends on how much energy they have stored and how much current they draw.

Will there be voltage when the inverter is stopped

Contact Us

For catalog requests, pricing, or partnerships, please visit:
<https://www.a-core.pl>