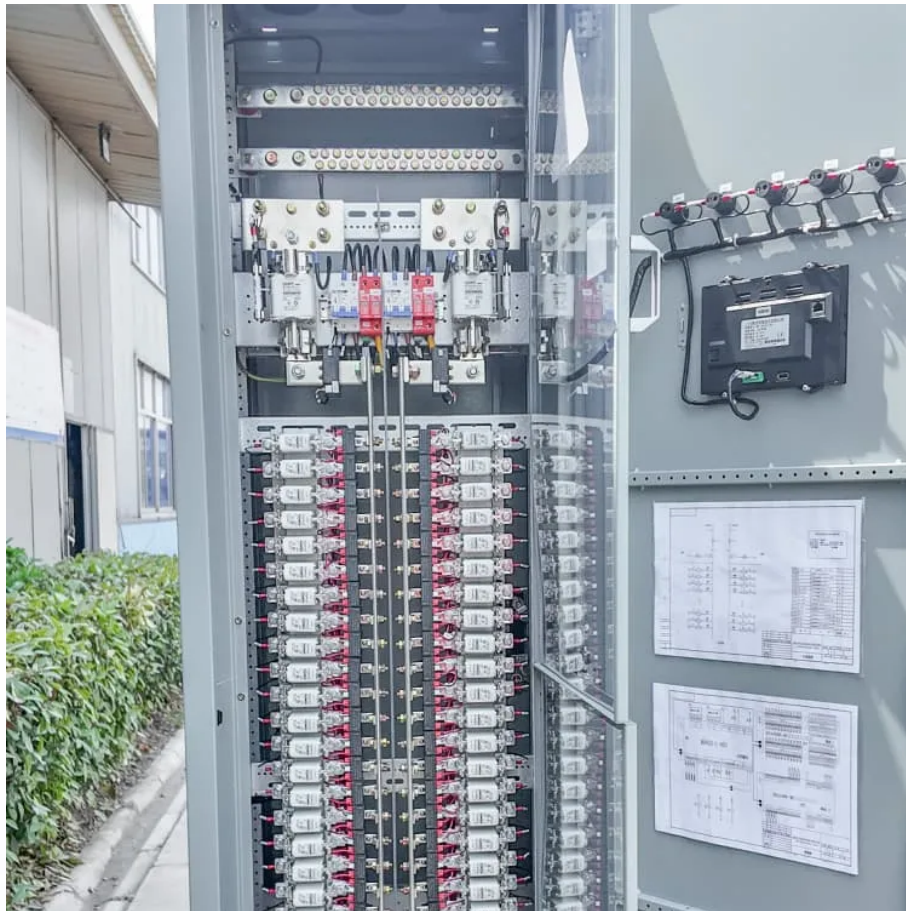


## A-Core Container

# Wholesale pricing



## Overview

---

What is the difference between wholesale and retail price?

The difference between the wholesale and retail price is the gross profit that then pays for the business & operational expenses; and then finally the owner receives the net profit. Sourcing products: This could be from warehouse clubs, such as Costco or Sam's Club, or from traditional wholesalers.

How to calculate wholesale price?

Using the formula, the wholesale price can be calculated as follows:  $WP = TC + DP$   $WP = \$6 + \$4$   $WP = \$10$  Therefore, the wholesale price of the product is \$10. To use the wholesale price calculator, follow these steps: Input the total unit cost in dollars. Input the desired profit per unit in dollars. Click the "Calculate" button.

What is wholesale price?

Wholesale price is the price charged for a product as sold in bulk to large trade or distributor groups as opposed to what is charged to consumers. The wholesale price is the sum of a given product's cost price plus the manufacturer's profit margin.

## Wholesale pricing

---

## Contact Us

---

For catalog requests, pricing, or partnerships, please visit:  
<https://www.a-core.pl>