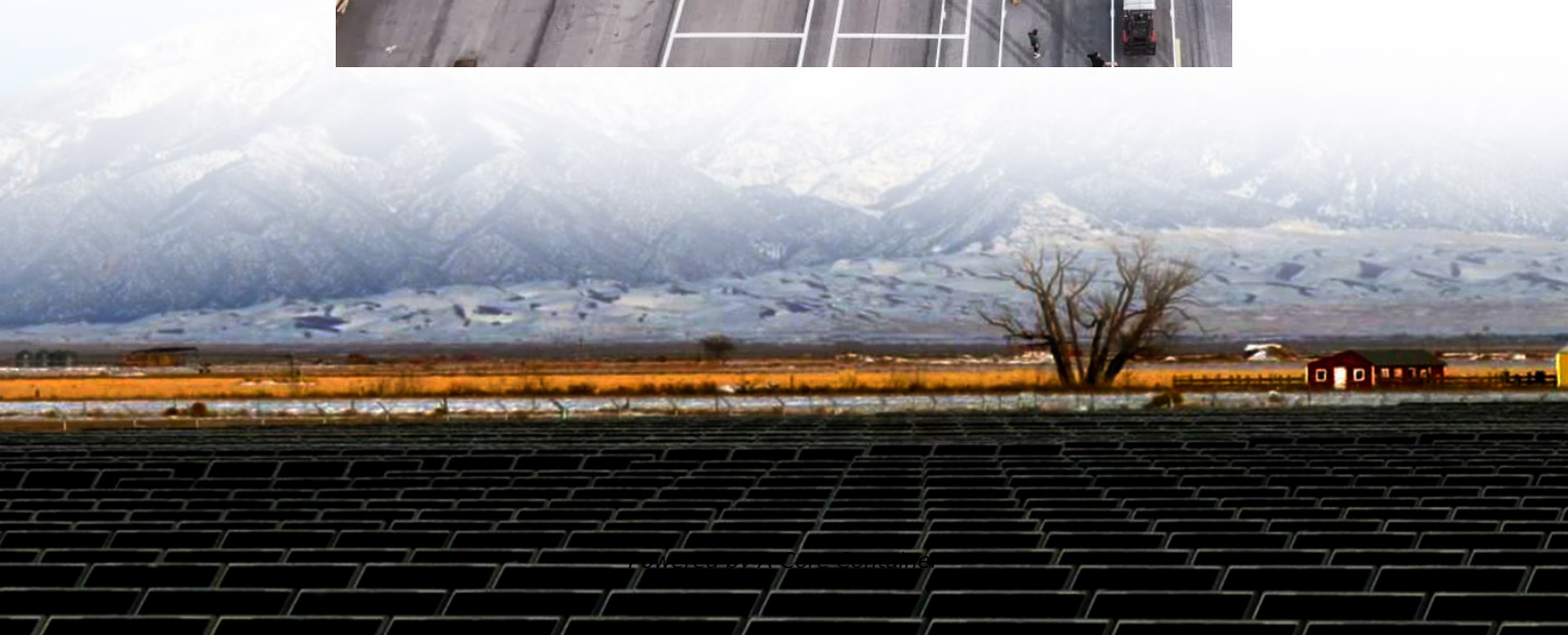
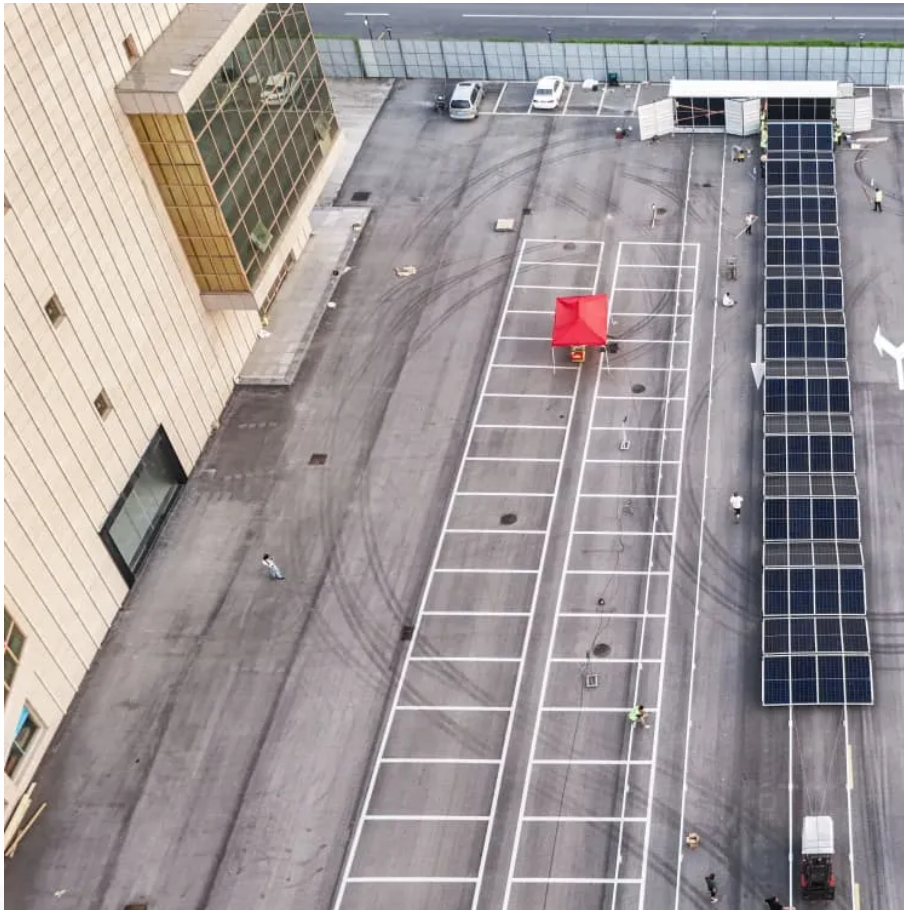


A-Core Container

Which is better single glass or double glass



Overview

Under ideal conditions, single glass can be slightly more efficient. However, double glass often wins in real-world scenarios due to their bifacial design and better durability. Are double glass solar panels better than single glass?

Double glass panels are more resistant to degradation from exposure to chemicals or pollutants, making them an excellent choice for industrial settings or harsh environments. Despite the added benefits of durability in double glass panels, single glass solar panels continue to dominate the market. Here's where they shine most:.

Is double glass better than single glass?

It depends. Under ideal conditions, single glass can be slightly more efficient. However, double glass often wins in real-world scenarios due to their bifacial design and better durability. Are double glass panels worth the extra cost?

.

Should you choose single glass panels or double glass panels?

For residents in moderate climates like Sydney or Melbourne, high-quality single glass panels may offer ample durability and performance. Conversely, those living in more humid conditions (e.g., Queensland) may benefit from the added moisture resistance of double glass panels.

What are double glass solar panels?

Also known as dual-glass or bifacial panels (when combined with dual-light capture capability), double glass solar panels feature glass on both the front and back of the module. Instead of a polymer backsheet, these panels utilize a thinner second sheet of glass to protect the solar cells.

Are single glass solar panels a good choice?

Disclaimer - Performance may vary based on installation factors and

environmental conditions. Single glass panels are the more traditional choice, offering several benefits: Proven Technology: Tried and tested across millions of installations worldwide, single-glass solar panels are a reliable option for residential and commercial use.

Are glass panels heavier than single glass?

They can be heavier if the manufacturer has used thicker glass (e.g. 2mm). Our panels with 1.6mm front and back weigh in at 21kg, which is comparable to single glass. (But thicker glass can be a very good thing). They used to be more expensive – but the price gap has really decreased in recent years.

Which is better single glass or double glass

Contact Us

For catalog requests, pricing, or partnerships, please visit:
<https://www.a-core.pl>