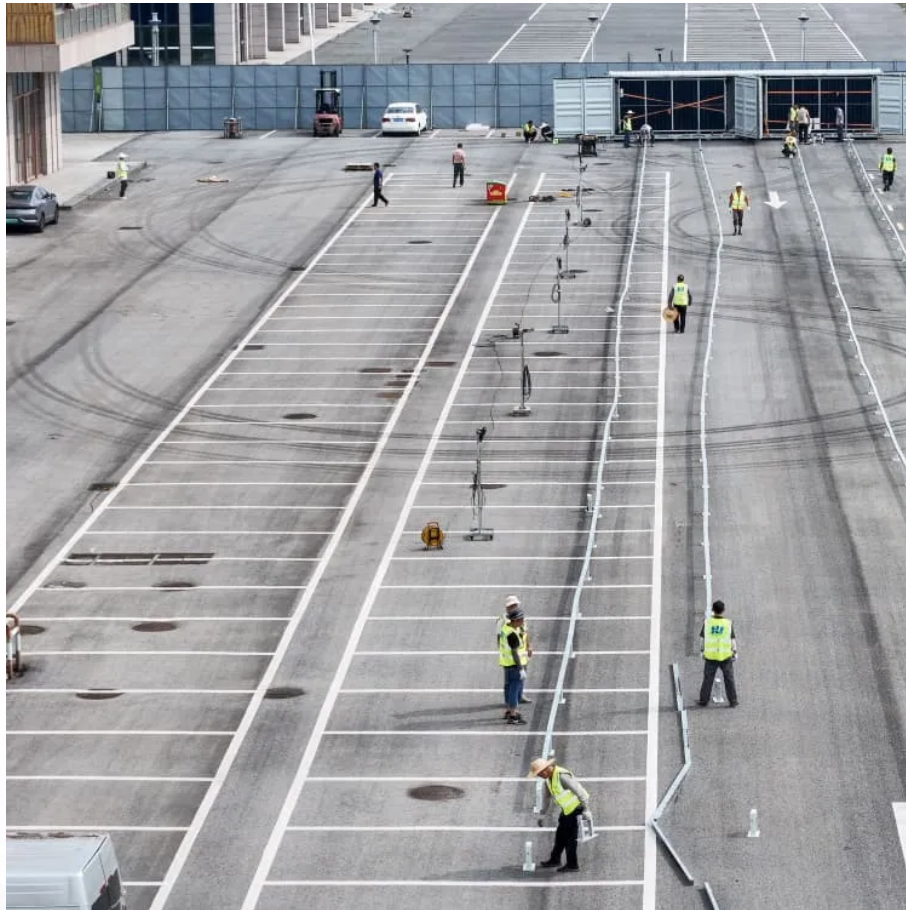


## A-Core Container

**What type of resistor should I use for a 12v inverter**



## Overview

---

On every system I've ever built, I used a 10w 10ohm resistor, doing it the old fashioned way. Even for dual 48v Victron Quattro 10k's, it wasn't too low of a resistance, and works good on 12v systems too.

On every system I've ever built, I used a 10w 10ohm resistor, doing it the old fashioned way. Even for dual 48v Victron Quattro 10k's, it wasn't too low of a resistance, and works good on 12v systems too.

20R at 48V is about 2.5A or therabouts, I'd suggest that will be just fine, give it a suitably rated switch and you're good to go. You're just trying to avoid that massive (almost infinite) current splat when you first connect the discharged inverter. The Seplos 48V BMS has a 51R 10W pre-charge.

Using a resistor with a 12V LED is essential to prevent damage and ensure longevity. This article will demystify the process of choosing the appropriate LED resistor for 12V circuits. We'll explain the necessary calculations, different resistor types, and practical wiring techniques. It provides an.

All inverters have a large bank of capacitors at the DC input. This ensures that the voltage output remains consistent when you switch around their AC loads. When you connect a battery bank to the inverter, a surge of current known as an inrush current flows to fill the capacitors. Initially, the.

ExpertPower's Guide on how to use a resistor to connect inverters to batteries. You may purchase this item here: <https://www.expertpower.com/2018/05/10/how-to-use-a-resistor-to-connect-inverters-to-batteries/>. You may purchase this item here:..

Resistor: This component I am least sure of. Because inverters contain capacitors, connecting them with a battery will tend to spark upon contact. To avoid this being a hazardous spark, adding a resistor in the circuit was recommended. How would such a resistor be sized, and would it be added on.

What makes a good solar inverter resistor?

For the resistor, this means high reliability with long lifetime, high voltage-

withstand capability and high accuracy. Panasonic has a variety of resistor families that can be employed in solar inverters applications. Is 20R a good voltage for a 48V.

## What type of resistor should I use for a 12v inverter

---

## Contact Us

---

For catalog requests, pricing, or partnerships, please visit:  
<https://www.a-core.pl>