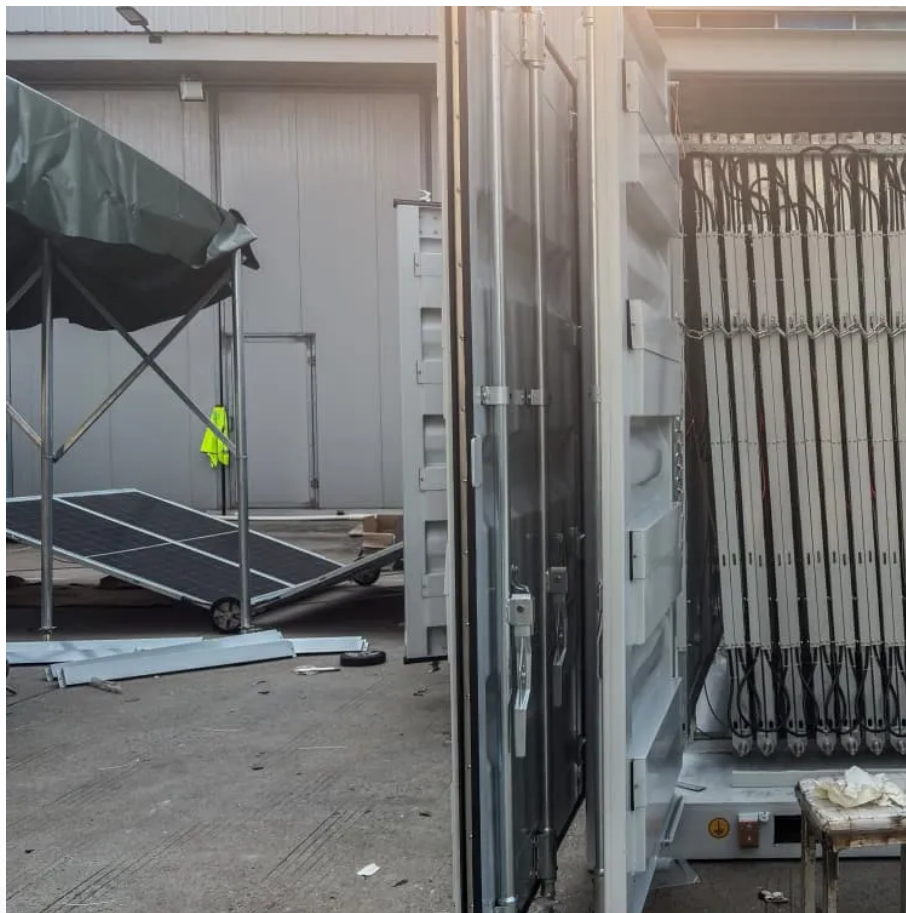


A-Core Container

What size inverter should I use with a 180ah lithium battery



Overview

Instead, opt for an inverter in the range of 300W to 500W, which comfortably covers these losses and provides the necessary power for efficient charging. How do I choose the right inverter size for my 200Ah lithium battery?

When it comes to choosing the right inverter size for your 200Ah lithium battery, there are a few factors you'll need to consider. The first is the power needs of the devices you plan on running off the inverter. Take into account their wattage requirements and how many devices will be connected at once.

Can a lithium battery run a large inverter?

Bottom line, if you want to run large inverter loads above 1000w on a lithium battery, make sure you choose an lithium battery that is designed for larger inverters or a system that can be paralleled safely with active balancing between the connected batteries.

What voltage should a 12V inverter run on?

The input voltage of the inverter should match the battery voltage. (For example 12v battery for 12v inverter, 24v battery for 24v inverter and 48v battery for 48v inverter) Summary What Will An Inverter Run & For How Long?

How much battery do I need to run a 3000-watt inverter?

You would need around 24v 150Ah Lithium or 24v 300Ah Lead-acid Battery to run a 3000-watt inverter for 1 hour at its full capacity Here's a battery size chart for any size inverter with 1 hour of load runtime Note! The input voltage of the inverter should match the battery voltage.

What is the recommended battery size for an inverter?

Interpreting Results: Once you input the required data, the calculator will generate the recommended battery size in ampere-hours (Ah). For instance, if

your power consumption is 500 watts, the usage time is 4 hours, and the inverter efficiency is 90%, the calculator might suggest a battery size of approximately 222 Ah.

How do I choose a battery inverter?

Additionally, pay attention to the voltage compatibility between your battery and the chosen inverter. Ensure they are both compatible (most inverters work with standard 12V batteries) and match each other's specifications for optimal performance.

What size inverter should I use with a 180ah lithium battery

Contact Us

For catalog requests, pricing, or partnerships, please visit:
<https://www.a-core.pl>