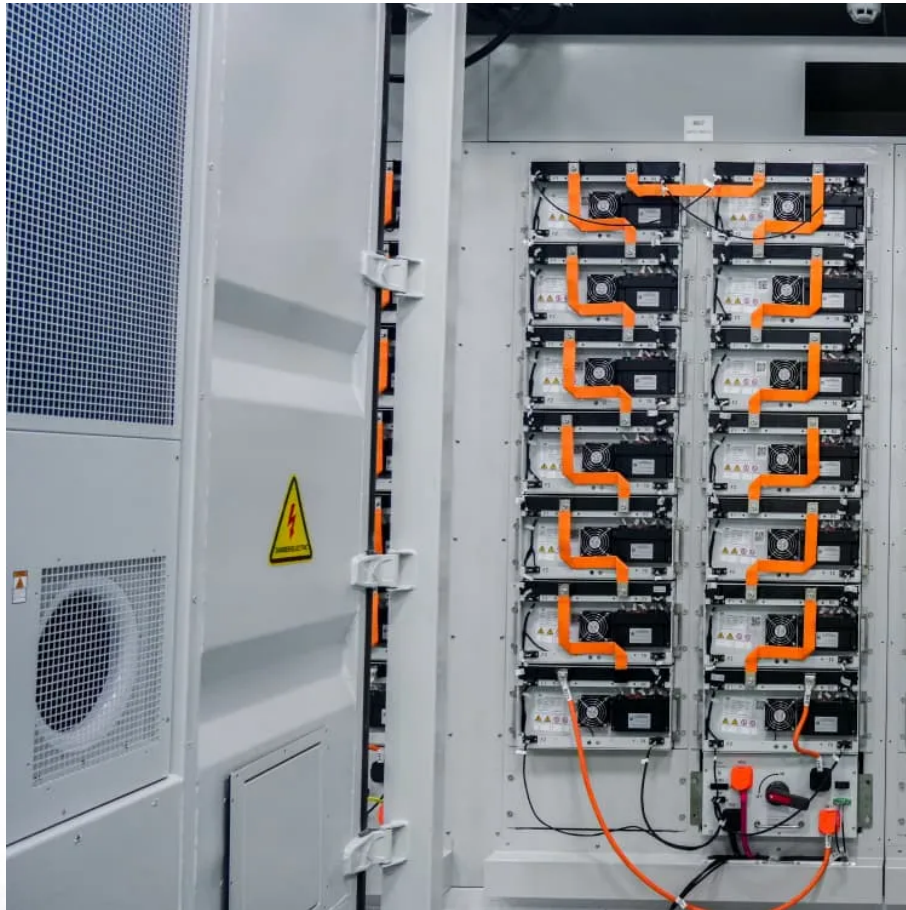


A-Core Container

What is the size of the solar panel 225



Overview

A1: For homes, it's about 1.7m x 1.0m. For commercial projects, around 2.0m x 1.0m. Portable panels vary widely. Q2: Do bigger panels mean better performance?

Not always. Efficiency matters too. What are the different sizes of solar panels?

There are 3 standardized sizes of solar panels, namely: 60-cell solar panels size. The dimensions of 60-cell solar panels are as follows: 66 inches long, and 39 inches wide. That's basically a 66x39 solar panel. But what is the wattage?

That is unfortunately not listed at all. 72-cell solar panel size.

How big should a commercial solar panel be?

For commercial solar panel installations, panels often range from 400W to 600W, with dimensions of approximately 195 x 99 x 3.81 cm (6.40 x 3.25 x 0.13 feet). Several factors affect the size of a solar panel, including the type of solar cells used, the desired wattage output, your property's size and the panel's overall efficiency.

How big is a 250 watt solar panel?

A: A 250-watt solar panel, which is an older and less common size now, is typically about 164 cm long by 99 cm wide. Understanding solar panel size & weight specifications is essential for successful solar planning. Key takeaways include:.

How much wattage does a solar panel take?

Solar panel sizes and wattage range from 250W to 450W, taking up 1.6 to 2 square metres per panel. One of the most important things to consider when getting solar panels for your home is the specific solar panel size and dimensions.

How big is a 96 cell solar panel?

96-cell solar panel size. The dimensions of 96-cell solar panels are as follows: 41.5 inches long, and 63 inches wide. That's a 63×41.5 solar panel. This form is a bit shorter but wider. This is the typical classification of solar panel sizes (based on the solar cell size). It's a bit theoretical and quite useless for most calculations.

How big is a solar panel in the UK?

Solar panel sizes in the UK are generally between 250W and 450W for domestic installations, with physical dimensions typically measuring around 189 x 100 x 3.99 cm (6.2 x 3.28 x 0.13 feet). For commercial solar panel installations, panels often range from 400W to 600W, with dimensions of approximately 195 x 99 x 3.81 cm (6.40 x 3.25 x 0.13 feet).

What is the size of the solar panel 225

Contact Us

For catalog requests, pricing, or partnerships, please visit:
<https://www.a-core.pl>