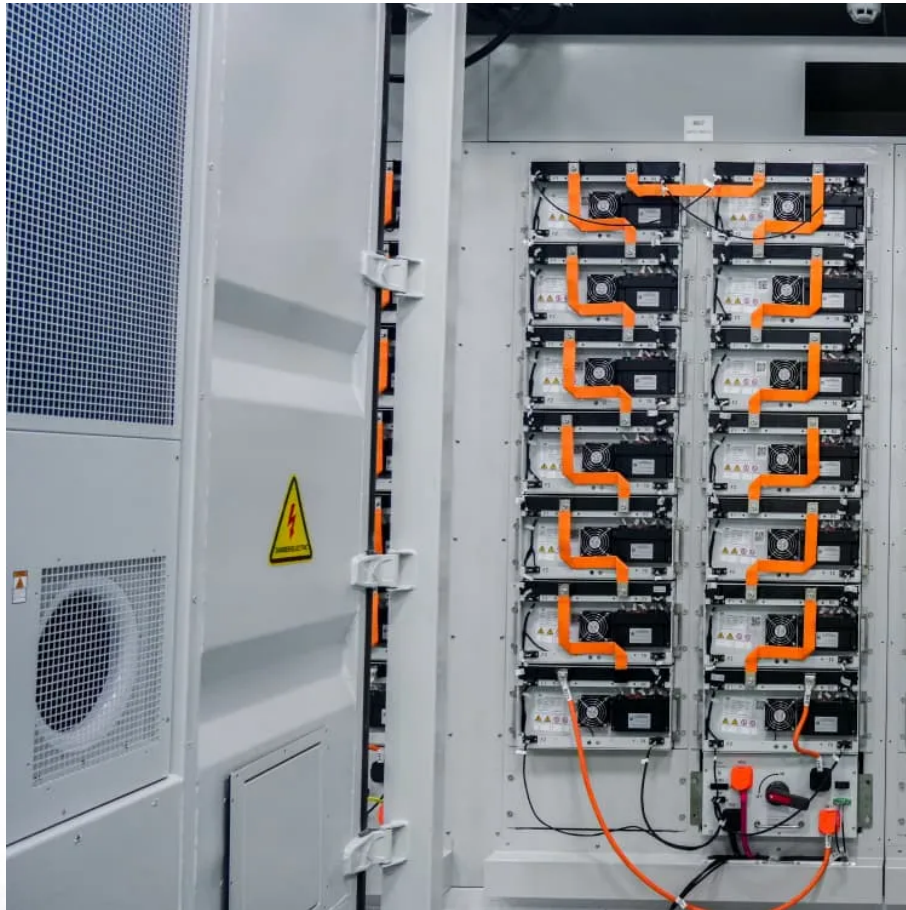


## A-Core Container

# What is the size of a solar panel in a sun room



## Overview

---

What is the standard size of a solar panel?

The most common residential solar panel measures approximately 65" × 39" × 1.5" (5.4 feet by 3.25 feet) and produces 350-450 watts. How big are solar panels?

This is the typical classification of solar panel sizes (based on the solar cell size). It's a bit theoretical and quite useless for most calculations. The only useful thing that we get from this is depth or height (panel thickness): Most solar panels are about 1.5 inches thick.

How much space do solar panels need?

The size of the solar panels is directly linked to the capacity of the photovoltaic system you plan to install. For instance, the amount of energy required by a household will determine the size of the system. Here's how much space is typically needed for systems of different capacities: On average, at least 50 m<sup>2</sup> of space is required.

How many solar cells are in a solar panel?

The solar panels people install in their homes are made up of either sixty or seventy-two solar cells. Are all solar panels the same size?

If solar panels contain different numbers of solar cells, then they aren't all the same size. As a general rule, the more solar cells a solar panel has, the bigger the size.

How big is a 96 cell solar panel?

96-cell solar panel size. The dimensions of 96-cell solar panels are as follows: 41.5 inches long, and 63 inches wide. That's a 63×41.5 solar panel. This form is a bit shorter but wider. This is the typical classification of solar panel sizes (based on the solar cell size). It's a bit theoretical and quite useless for most calculations.

Why do I need a solar panel size chart?

Using a solar panel size chart can help you choose the best types of solar panels for your home or application. Because the size of a standard solar panel can vary, a chart that outlines the wattage capabilities of each can be crucial when asking, how many solar panels do I need?

.

How many solar panels will fit on my roof?

Sixty cell solar panels are generally six cells wide and ten high, while seventy-two cell panels are laid out six wide by twelve high. While there is some size variation in solar panels depending on the model and manufacturer, these standard panel sizes offer a good guideline when calculating how many panels you will be able to fit on your roof.

## What is the size of a solar panel in a sun room

---

## Contact Us

---

For catalog requests, pricing, or partnerships, please visit:  
<https://www.a-core.pl>