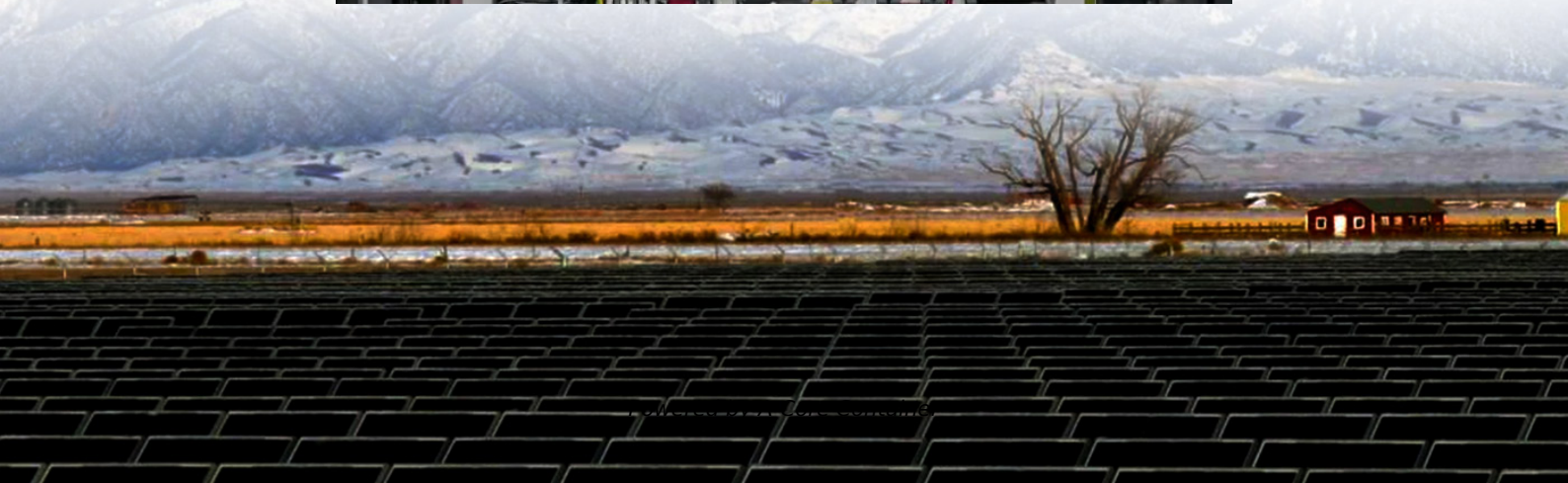
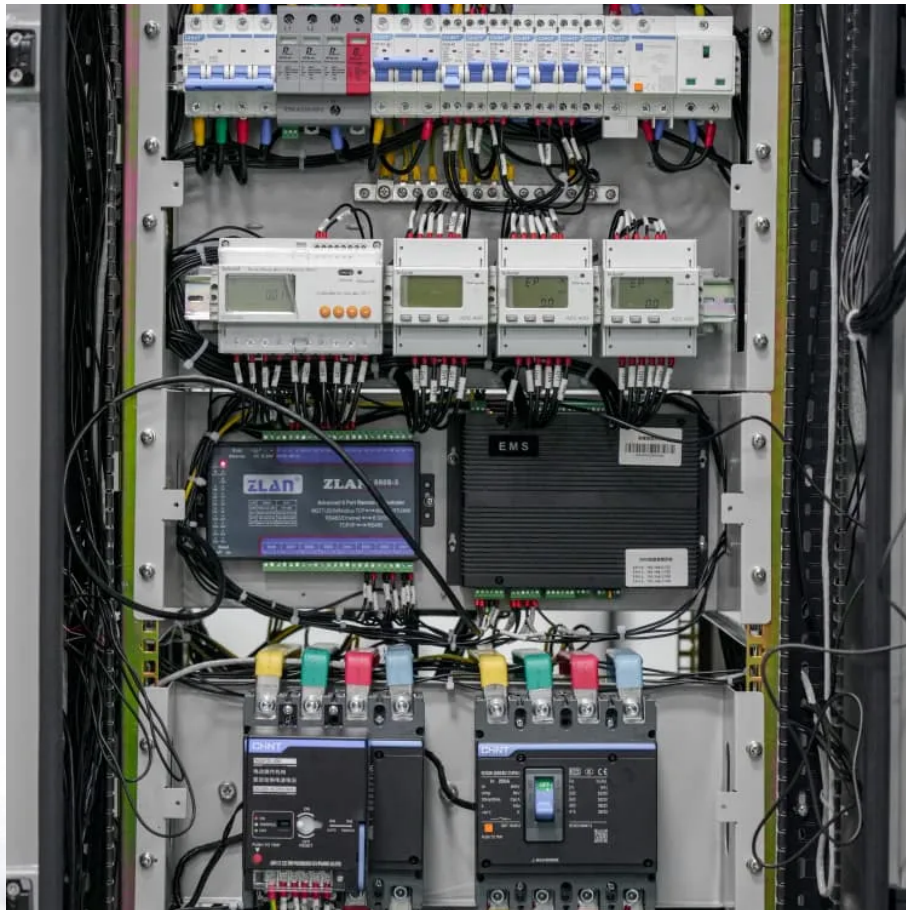


A-Core Container

**What equipment does a
standalone energy storage
power station need**



Overview

Energy storage stations require a variety of specialized equipment to function efficiently and effectively: 1. Batteries, 2. Inverters, 3. Safety systems, 4. Control systems. What are battery storage power stations?

Battery storage power stations are usually composed of batteries, power conversion systems (inverters), control systems and monitoring equipment. There are a variety of battery types used, including lithium-ion, lead-acid, flow cell batteries, and others, depending on factors such as energy density, cycle life, and cost.

What are the benefits of a standalone battery energy storage system?

Standalone battery energy storage systems provide backup power, optimize energy usage, and enhance grid reliability. Large-scale commercial energy storage systems are often associated with other renewable energy assets, especially solar. For some businesses, though, there might be an advantage to standalone battery storage.

What is a stationary energy storage system?

6 The term stationary is used to denote energy storage systems not contained in an electric vehicle. 7 See for instance New York's Energy Storage System Permitting and Interconnection Process Guide For New York City Lithium-Ion Outdoor Systems.

Do you need a battery energy storage system?

Battery energy storage systems are often associated with solar, but some businesses might benefit from a standalone system. Learn how.

What are the core functions of energy storage power stations?

In addition to these core functions, functions such as anti-backflow protection, support for parallel/off-grid operation, and islanding protection further enhance the reliability and versatility of energy storage power stations.

What is a standalone battery energy storage system (BESS)?

A standalone battery energy storage system (BESS) consists of several key components: Lithium-Ion Batteries: These batteries are similar to those used in electric vehicles, but larger. BESS batteries are regulated for safety, and systems are carefully designed to avoid fires.

What equipment does a standalone energy storage power station n

Contact Us

For catalog requests, pricing, or partnerships, please visit:
<https://www.a-core.pl>