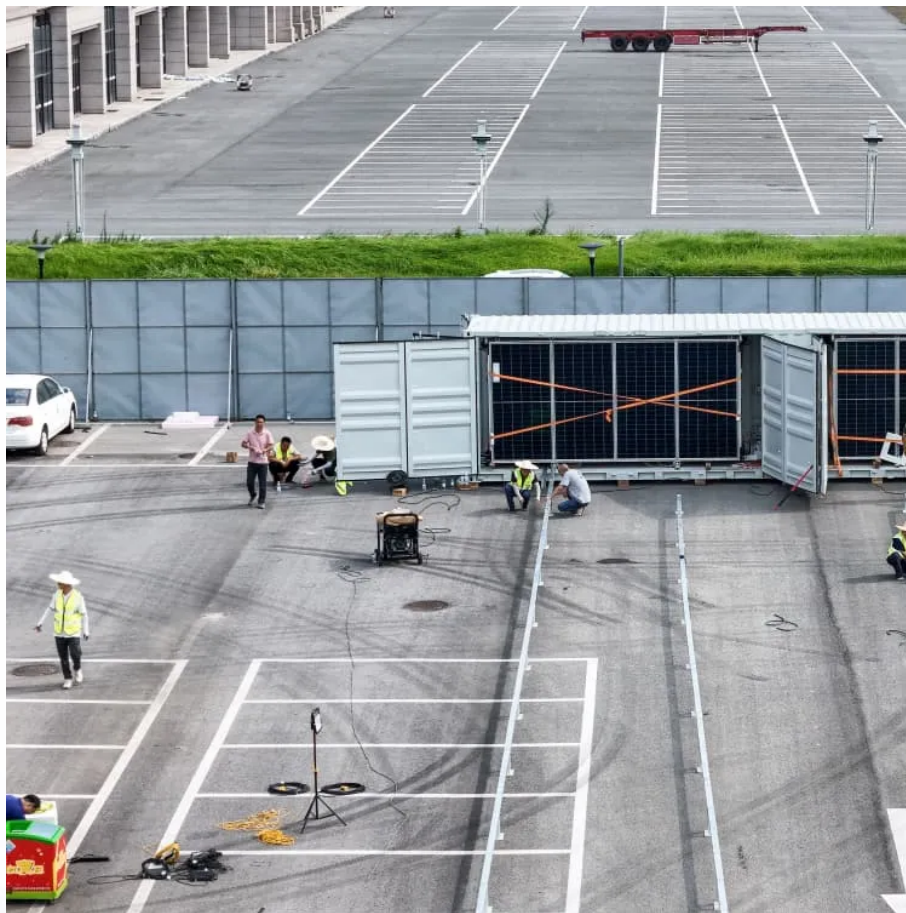


A-Core Container

What does mixed-speed mean in solar panels



Overview

Connecting more than one solar panel in series, in parallel or in a mixed-mode is an effective and easy way not only to build a cost-effective solar panel system but also helps us add more solar panels in the future to meet our increasing daily needs for electricity.

Connecting more than one solar panel in series, in parallel or in a mixed-mode is an effective and easy way not only to build a cost-effective solar panel system but also helps us add more solar panels in the future to meet our increasing daily needs for electricity.

Though mixing different solar panels is not recommended, it's not forbidden and things would be ok as long as each panel's electrical parameters (voltage, wattage, amps) are carefully considered. When you intend to wire two panels produced by different vendors, the vendors are not the problem. The.

Yes, you can mix solar panels with different wattages – but there's a catch. How well they work together depends on how you connect them. There are two main ways to connect solar panels: 1. Series Connection (Like Christmas Lights) With series connections, you connect panels end-to-end (positive to.

Then yes, you can mix solar panels that have different wattages. But it is not usually advised because mixing different wattage panels reduces the efficiency and power output. Wattage Mixing Reduces Efficiency and Power A variety of wattage panels has different voltage and amps outputs. The system.

But a solar panel system is a big investment, so it's important to understand the basics before you sign a contract. To make learning about solar easier, we identified some of the most critical (and most confusing) solar terms to know. Whether you're shopping for home solar panels, solar panels for.

When you have mixed solar panels there are three ways to wire them: In this article, we are going to talk about series and parallel. But first some theories about solar panel characteristics. If you don't understand this, then you won't understand the reasoning behind it. Luckily there are only two.

What are the rules for mixing panels of different wattage or even brand?

I have two of these from renogy in series. 12v, tracer bn 4215 controller. Could I add more of these to existing array so that 200 would give more mileage on the same surface area?

I would actually prefer to buy elsewhere than.

What does mixed-speed mean in solar panels

Contact Us

For catalog requests, pricing, or partnerships, please visit:
<https://www.a-core.pl>