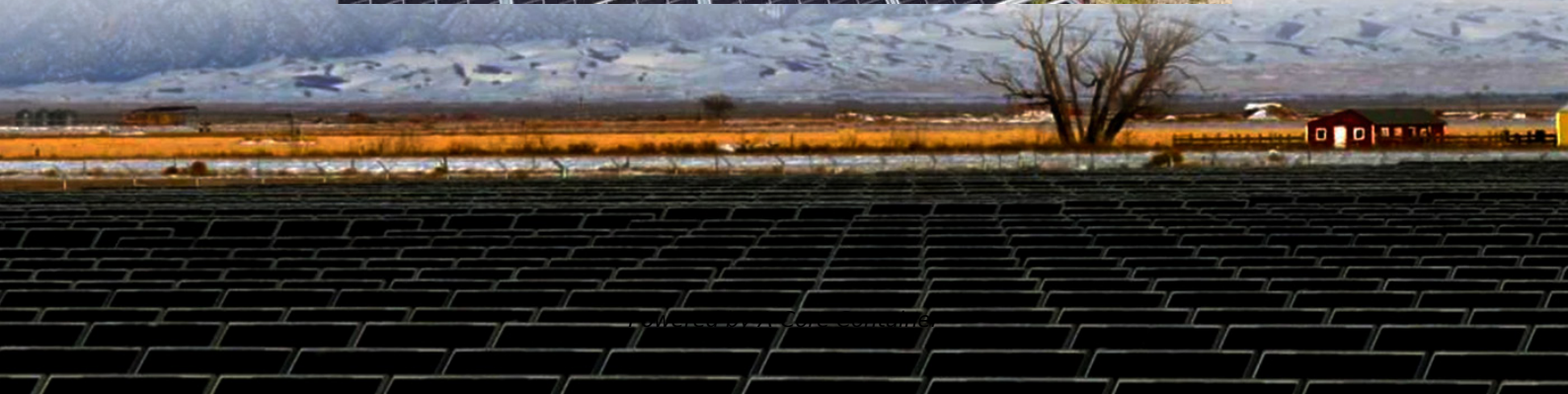
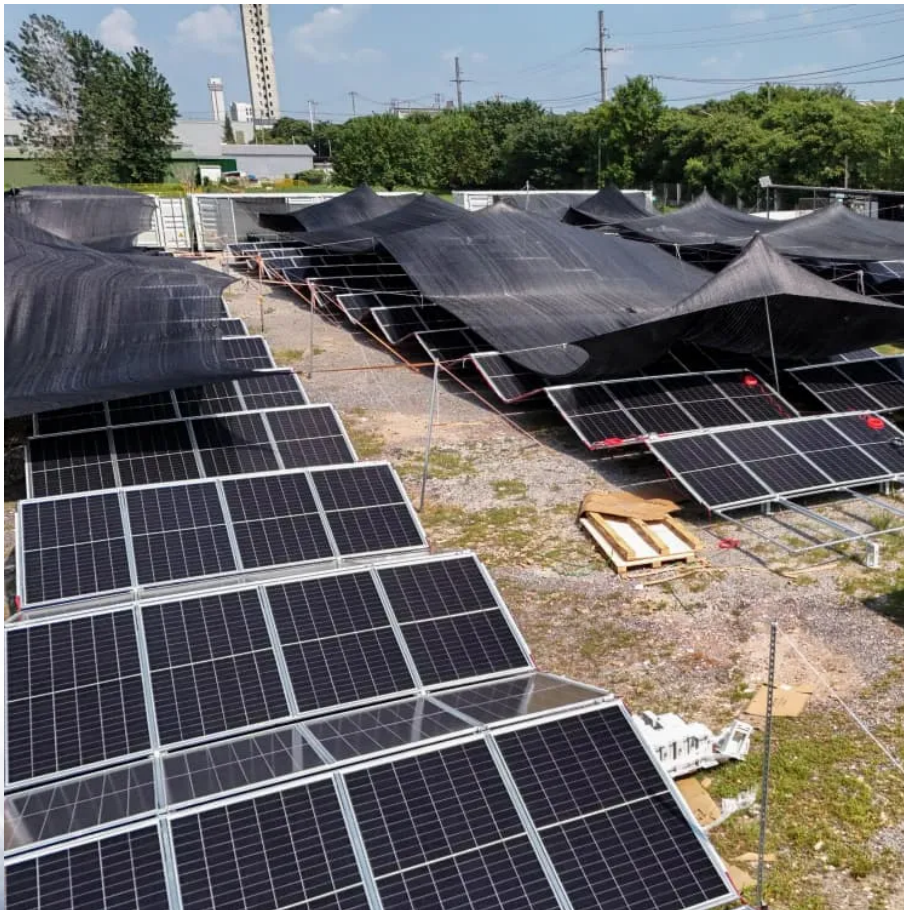


## A-Core Container

# What are the supporting facilities for solar power station and energy storage power station



## Overview

---

With thousands of energy storage sites already in place across the State, this exciting technology is playing an important role in making sure New York has affordable and dependable energy.

With thousands of energy storage sites already in place across the State, this exciting technology is playing an important role in making sure New York has affordable and dependable energy.

Energy storage is a smart and reliable technology that helps modernize New York's electric grid, helping to make the grid more flexible, efficient, and resilient. With thousands of energy storage sites already in place across the State, this exciting technology is playing an important role in.

What are the supporting energy storage power stations?

Supporting energy storage power stations refer to facilities designed to store and distribute energy generated from various sources effectively. 1. These stations play a crucial role in enhancing energy reliability and stability by balancing.

Elevate Renewables ® has an extensive brownfield pipeline of energy storage projects in various stages of development in Connecticut and several other states, including California, Arizona, New York, New Jersey, and Maryland. Elevate's battery energy storage systems (BESS) will assist the.

Sometimes energy storage is co-located with, or placed next to, a solar energy system, and sometimes the storage system stands alone, but in either configuration, it can help more effectively integrate solar into the energy landscape. What Is Energy Storage?

"Storage" refers to technologies that.

Battery storage power stations store electrical energy in various types of batteries such as lithium-ion, lead-acid, and flow cell batteries. These facilities require efficient operation and management functions, including data

collection capabilities, system control, and management capabilities.

Energy storage power stations are facilities that store energy for later use, typically in the form of batteries. They play a crucial role in balancing supply and demand in the electrical grid, especially with the increasing use of renewable energy sources like solar and wind, which can be.

## What are the supporting facilities for solar power station and energ

---

### Contact Us

---

For catalog requests, pricing, or partnerships, please visit:  
<https://www.a-core.pl>