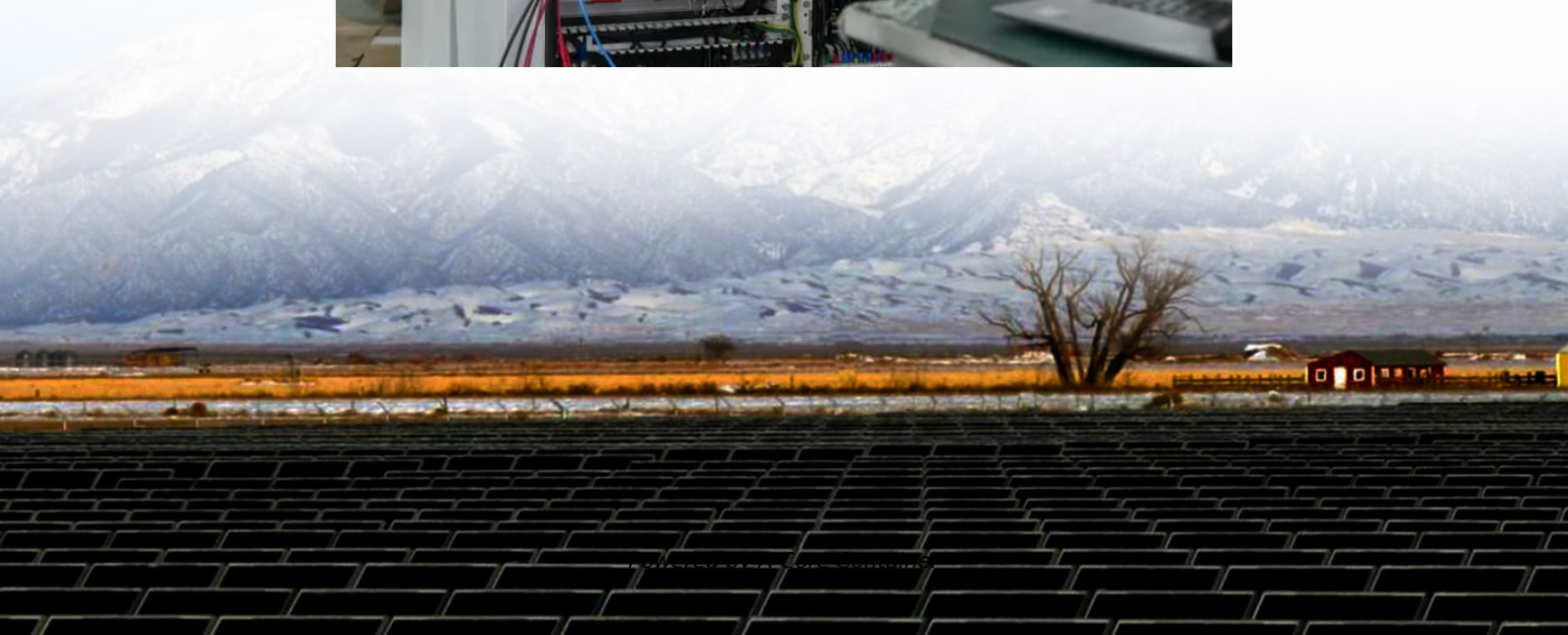
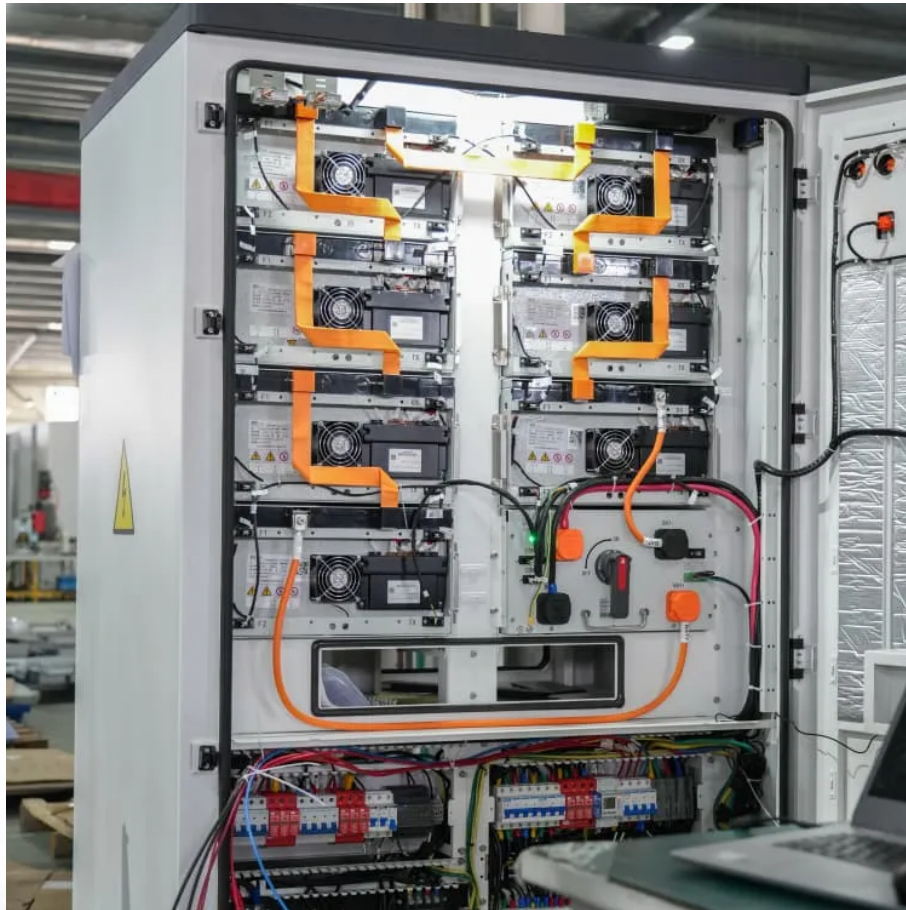


A-Core Container

Thousands of dollars for entry-level outdoor power supply



Overview

Portable power stations under \$1000 offer reliable energy solutions for outdoor adventures and emergencies, with capacities suitable for high-demand devices. Key features include fast charging, multiple output options (AC, USB, DC), and durability with waterproof ratings (e.g., IP65).

Portable power stations under \$1000 offer reliable energy solutions for outdoor adventures and emergencies, with capacities suitable for high-demand devices. Key features include fast charging, multiple output options (AC, USB, DC), and durability with waterproof ratings (e.g., IP65).

LONG LASTING ENDURANCE: The Explorer 500 portable power station is built with the lithium-ion battery pack, in a safely designed frame structure to maximize, and long last the power for every single use of outdoor adventures and home use. **SUPPORT PASS-THROUGH CHARGING:** This power station features.

Portable power stations are more powerful and cost effective than ever before. And, thanks to advances in lithium-ion battery technology, they're also lighter and more compact. Whether you've been dreaming of van life or are building out your emergency kit in advance of that next blackout, there is.

I've checked out the best budget-friendly portable power stations perfect for camping, workshops, and power outages. Here are our recommendations. Deals are selected by the CNET Group commerce team, and may be unrelated to this article. I remember when power banks were new. They were an amazing.

A power station is a convenient way to provide emergency backup power, charge electronics when away from AC outlets, and provide a practical alternative to a loud and smelly generator. All the models in our test can also be recharged with solar panels. After considering more than 40 models, we.

One of the most significant factors that determine the cost of an outdoor energy power supply is its capacity. Capacity is measured in watt - hours (Wh) or amp - hours (Ah), and it indicates how much energy the power supply can

store. Generally, the higher the capacity, the more expensive the power.

When you're gearing up for your next outdoor adventure or preparing for unexpected power outages, having a dependable power station can significantly enhance your experience. With so many options under \$1000, you'll find models that cater to your specific needs, whether you're charging gadgets or. What is a good portable power station?

FlashFish 200W Portable Power Station 4. MARBERO M822 Portable Power Station 5. Westinghouse 194Wh 300 Peak Watt Portable Power Station 6. FlashFish 300W Solar Generator 7. MARBERO M82 88Wh Power Station 8. DEWALT DXAEJ14 Digital Portable Power Station How long do portable power stations run?

What can you run on a portable power station?

.

Why should you buy a portable power station?

Bring big backup power with you with these expert-recommended portable power stations, which can store enough power to charge electronics, appliances, and more.

How much does a power station cost?

A cheap, super-portable power station. This one has everything you need and comes in at \$239. A cheap, portable power station offering a broad array of ports and a decent power output for just \$239. A big power station available for a low price. If you want a lot of battery capacity, this is the one for you.

Is it a good time to buy a portable power station?

With prices dropping, it's a great time to think about investing in one of the best portable power stations. I was impressed by the options in my test, and would recommend any of them to first-time power station purchasers.

How much power can a portable power station hold?

While a particular power station might claim to hold 1,000 watt hours, the actual amount of usable power you can get out of it is a different story. The best portable power stations also have an onboard computer that shows you how much energy is left in your unit, as well as how much power it's currently

using.

Do all power stations provide a power source?

While all power stations are intended to provide a power source, each model differs in their overall design and included features. Some models have an intuitive mobile app to fully control your power station wirelessly. Others may offer expandable battery capacity, and some are advertised as being used as an uninterruptible power supply.

Thousands of dollars for entry-level outdoor power supply

Contact Us

For catalog requests, pricing, or partnerships, please visit:
<https://www.a-core.pl>