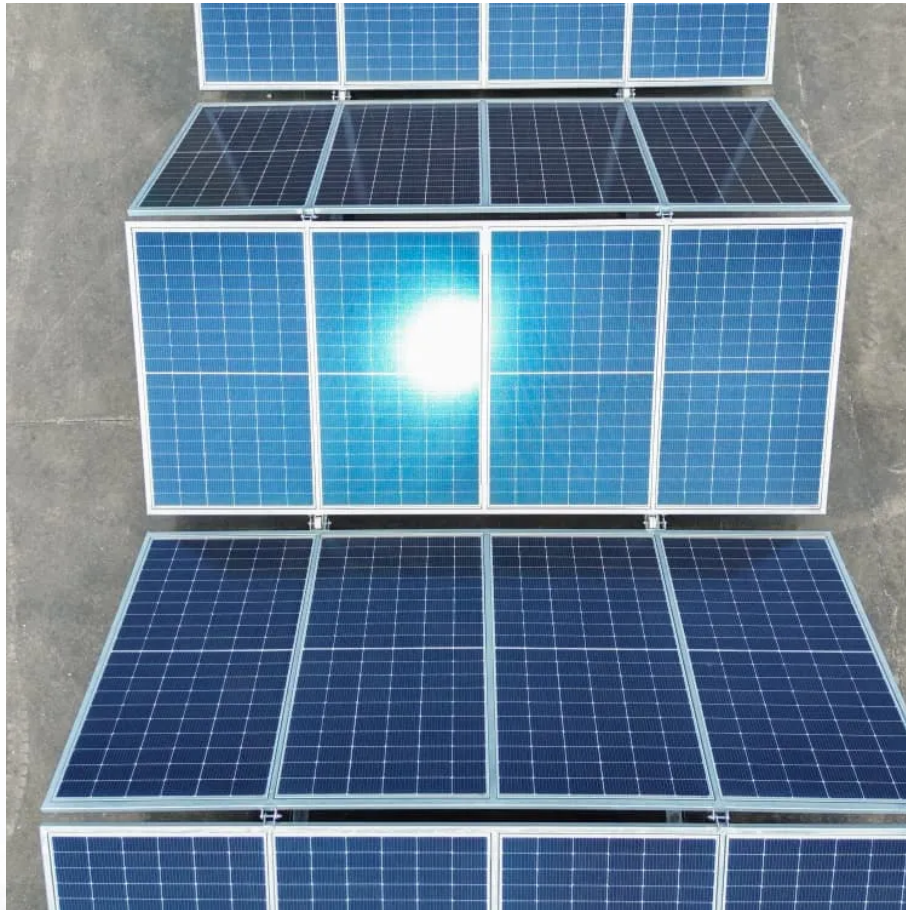


A-Core Container

Telecom Base Station Power Fire Prevention



Overview

Fire prevention starts with proper cable separation. Power and data cabling should be routed separately to prevent heat buildup. Conductors need derating based on ambient conditions. Adequate airflow paths should be established during the design phase. What is a telecommunications fire protection standard?

This standard provides requirements for fire protection of telecommunications facilities providing telephone, data, internet transmission, wireless, and video services to the public as well as life safety for the occupants plus protection of equipment and service continuity.

What is a fire suppression system?

Fire Suppression Systems: This code covers a range of fire suppression systems used in telecommunications environments, such as clean agents, water mist, and fire extinguishers. Each system has specific requirements to ensure the best protection of sensitive telecommunications equipment.

What happened to mobile networks during the 'camp fire' and 'Kincade fire'?

More recently, in the past two years, the destructive “Camp Fire” and “Kincade Fire” that started in California caused power cuts to many cell towers and led mobile carriers to work on minimizing disruption¹. During the fires, mobile network carriers most often resort to batteries when they lose power.

Can Telecom site automation help during a power outage?

Weather-related power outages and unreliable AC grid power can not be avoided in some regions in the world. In these situations, telecom site automation can help during power outages across either individual or multiple sites and be beneficial during times of “normal” operation. The first link in the chain of power to a site is the AC grid.

Why should a telecom network be prepared for a power outage?

It is also possible to shut down certain equipment during times of lower site traffic to simply save on energy consumption. Preparing your network for power outages caused by weather and natural disasters with advanced technology will increase the resilience, reliability, and efficiency of your telecom sites.

How does Telecom site automation work?

Telecom site automation can also interface to many different AC meters that might be present or added at a site. This interface can give detailed data on AC power, both to determine the health of the power, but also to potentially compare sites power consumption, or with revenue-grade meters for multi-tenant billing.

Telecom Base Station Power Fire Prevention

Contact Us

For catalog requests, pricing, or partnerships, please visit:
<https://www.a-core.pl>