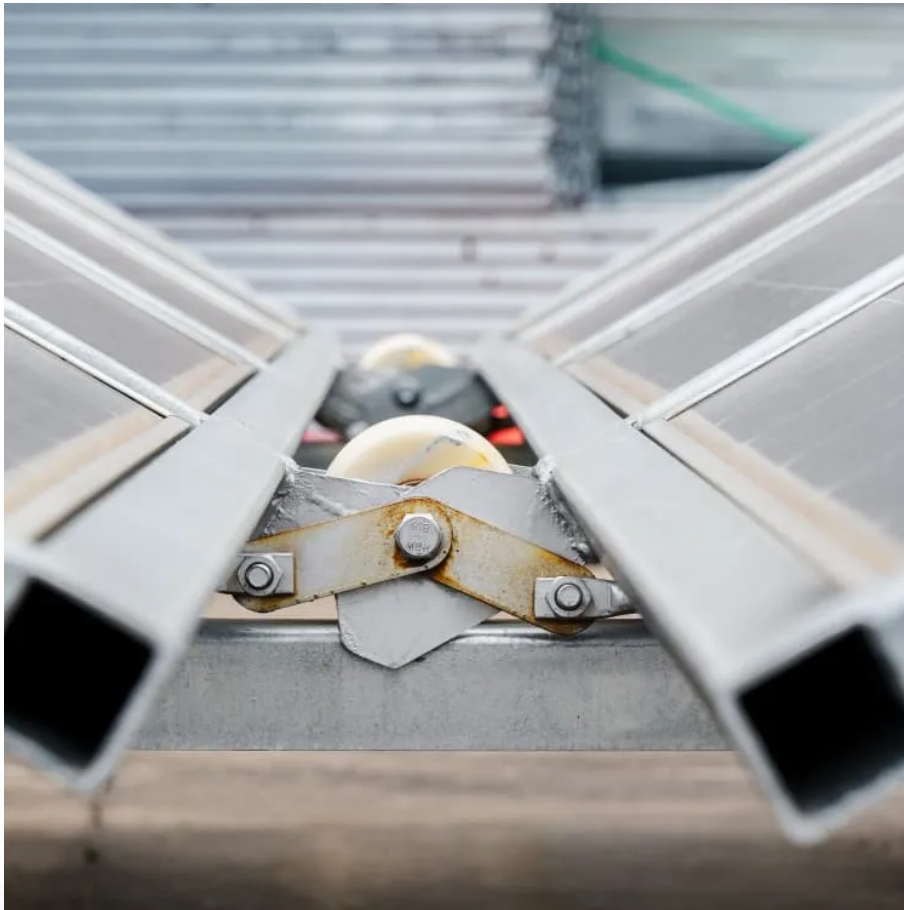


## **A-Core Container**

# **Superimpose outdoor power supply**



## Overview

---

The fastest way to bring power outdoors is to install a receptacle directly behind an existing indoor outlet. Alternatively, you can drill through the wall from a basement or crawlspace and attach a receptacle on the house exterior using an extension ring.

## Superimpose outdoor power supply

---

## Contact Us

---

For catalog requests, pricing, or partnerships, please visit:  
<https://www.a-core.pl>