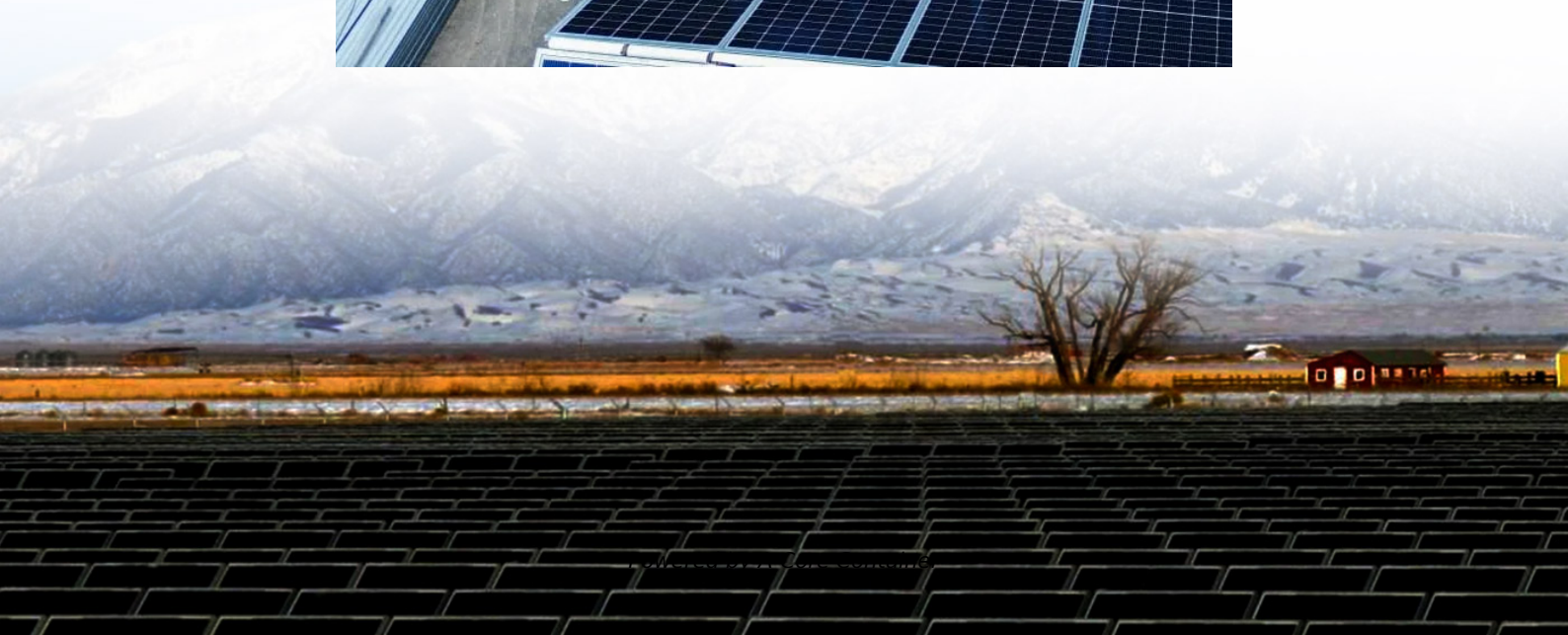


## A-Core Container

# Structure of double-glass modules



## Overview

---

Dual-glass type modules (also called double glass or glass-glass) are made up of two glass surfaces, on the front and on the rear with a thickness of 2.0 mm each. What is a double glass module?

The double glass module design offers not only much higher reliability and longer durability but also significant Balance of System cost savings by eliminating the aluminum frame of conventional modules and frame-grounding requirements. The application of double-glass modules covers multiple markets including utility, residential and commercial.

What is a double glass solar module?

In the ever-evolving world of photovoltaic technology, double glass solar modules are emerging as a game-changer. By encapsulating solar cells between two layers of glass, these modules offer unparalleled durability and efficiency. But what exactly sets them apart?

What are double glass solar modules?

.

What are glass-glass PV modules?

Glass-glass PV modules, also known as double glass solar panels, are photovoltaic modules encapsulated with tempered glass on both the front and back sides. Compared to traditional glass-backsheet modules, they offer greater durability and environmental resistance.

Why are double glass modules symmetrical?

Mechanical constraints on cells: the fact that the structure of the double glass modules is symmetrical implies that the cells are located on a so-called neutral line, the upper part of the module being in compression during a downward mechanical load and the lower glass surface being in tension.

What is the bifaciality of a double glass module?

Bifaciality: The bifaciality of double glass modules produces a gain of around 10-11% compared to the power measured on the front panel alone, for TOPCon type modules under so-called BNPI (bifacial nameplate irradiance) test conditions.

What is a dual-glass module?

Dual-glass type modules (also called double glass or glass-glass) are made up of two glass surfaces, on the front and on the rear with a thickness of 2.0 mm each. Some manufacturers, in order to reduce the weight of the modules, have opted for a thickness of 1.6 mm. Dualsun has chosen to stay with a thickness of 2.0 mm for reasons explained below.

## Structure of double-glass modules

---

## Contact Us

---

For catalog requests, pricing, or partnerships, please visit:  
<https://www.a-core.pl>