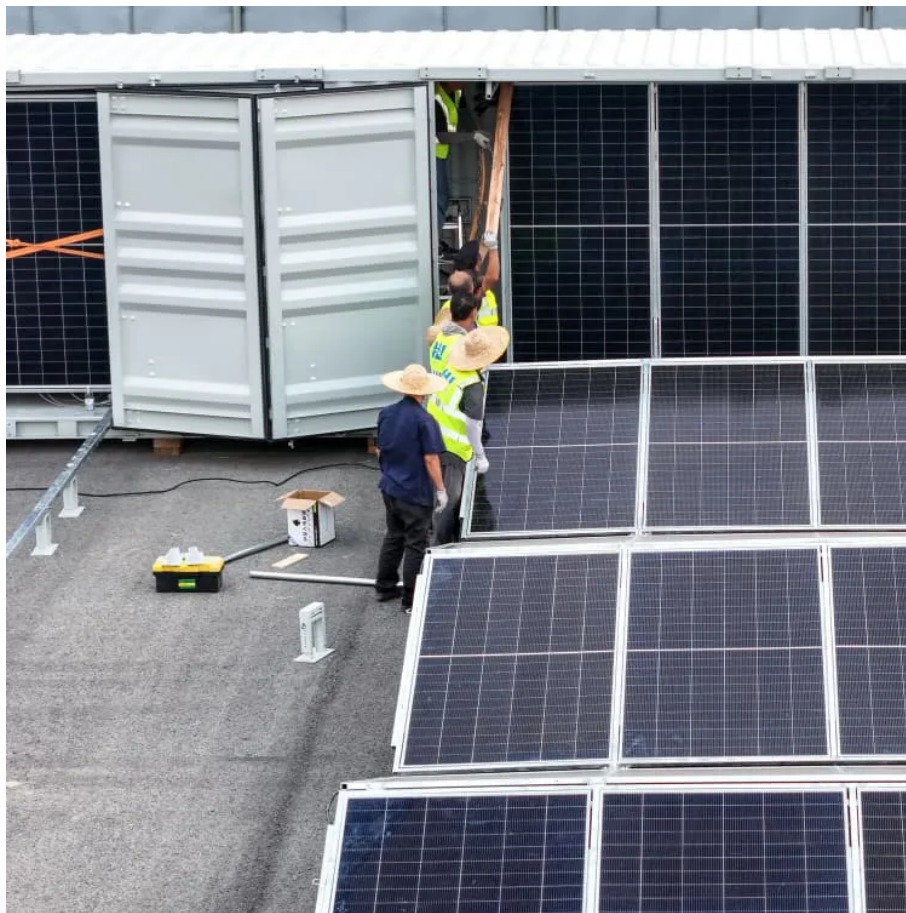


A-Core Container

Static balancing of lithium iron phosphate battery pack



Overview

Top balancing and bottom balancing are two strategies used to ensure the cells in a LiFePO_4 (lithium iron phosphate) battery pack have the same state of charge (SOC) and voltage, which is crucial for maintaining battery health and performance.

Static balancing of lithium iron phosphate battery pack

Contact Us

For catalog requests, pricing, or partnerships, please visit:
<https://www.a-core.pl>