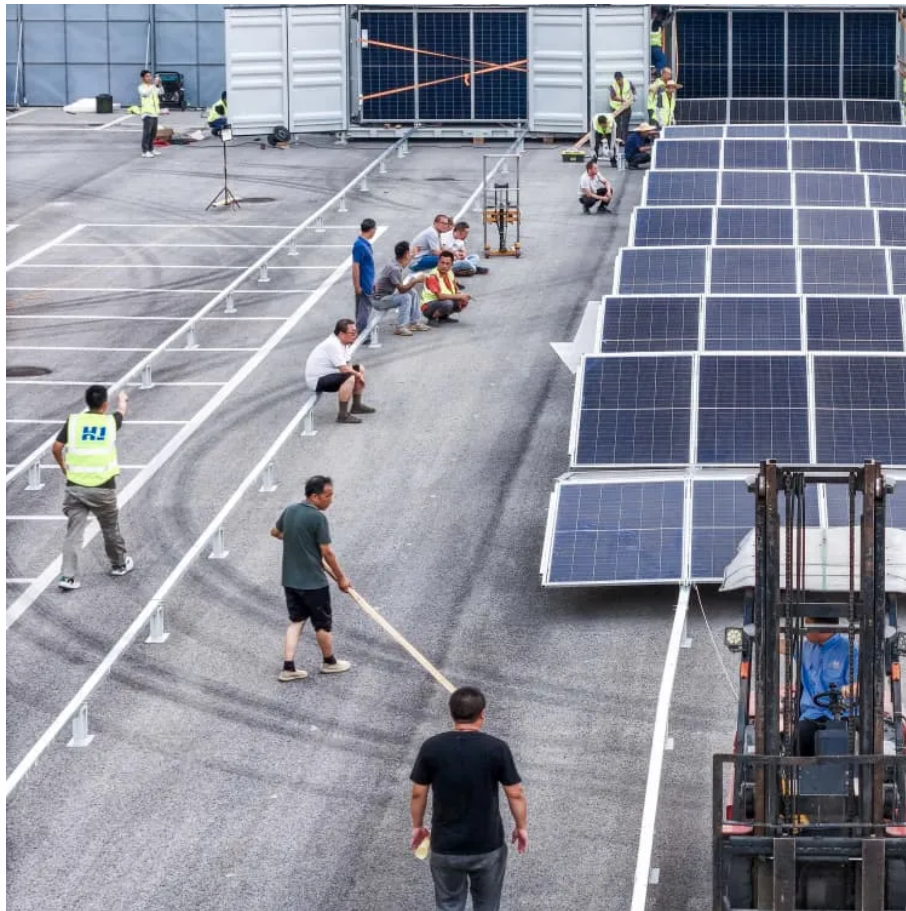


A-Core Container

Solar inverter nighttime power



Overview

The short answer is no—solar inverters do not produce or convert energy at night because they rely on sunlight to generate electricity. Do PV inverters work at night?

Photovoltaic (PV) inverters are vital components for future smart grids. Although the popularity of PV-generator installations is high, their effective performance remains low. Certain inverters are designed to operate in volt-ampere reactive (VAR) mode during the night.

Do solar inverters turn off at night?

Solar inverter systems do turn off at night when there is no sunlight, as solar panels only produce electricity when they are exposed to sunlight. This issue is common with Solectria, often due to a defective inverter. Night Mode - FoxESS Community - Owners & Installers. The inverter shuts off in the evening when there are no PV power.

Do inverters turn on if night mode is enabled?

In the morning, the inverter turns on if Night mode is enabled, but with Night mode, the inverter turns on in the morning. All inverters draw a very small amount of power while in standby overnight. The inverter's nighttime power consumption values are available in the inverter.

Why do inverters have a Q at night function?

With the Q at Night function, inverters can still contribute to grid stability by supplying reactive power, which helps regulate voltage and improve overall grid reliability. By providing reactive power support during nighttime, the Q at Night function helps prevent voltage fluctuations and enhances the stability of the grid.

Can a smart inverter be used at night?

Overall, the experimented results validated that the novel design can enhance

the efficiency of the smart inverter by using it during the night and improve the stability of the power system.

What is night mode on a SolarEdge inverter?

Night Mode is a function on SolarEdge inverters aimed at conserving energy and enhancing system safety. Essentially, it indicates that the rooftop solar array is not generating usable voltage, particularly after sunset. If the inverter shows Night Mode during daylight, it may indicate a connector issue or a need for technician intervention.

Solar inverter nighttime power

Contact Us

For catalog requests, pricing, or partnerships, please visit:
<https://www.a-core.pl>