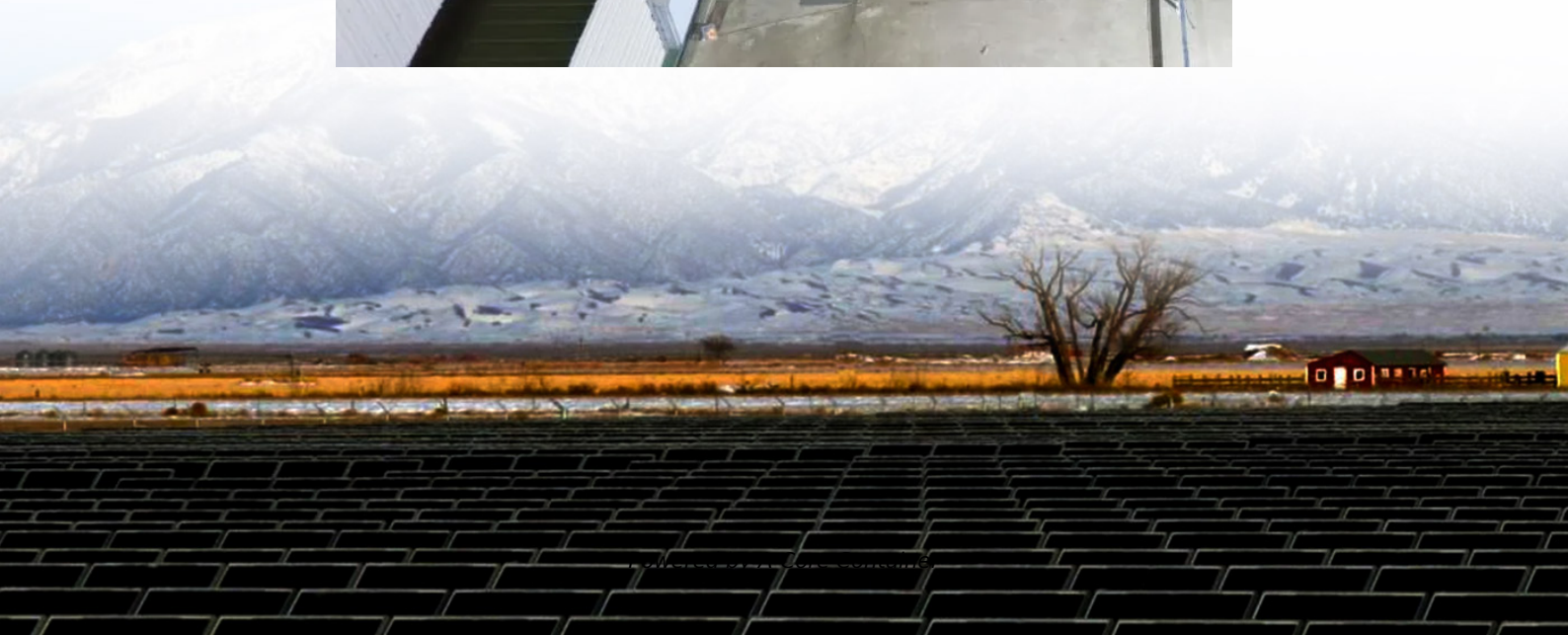
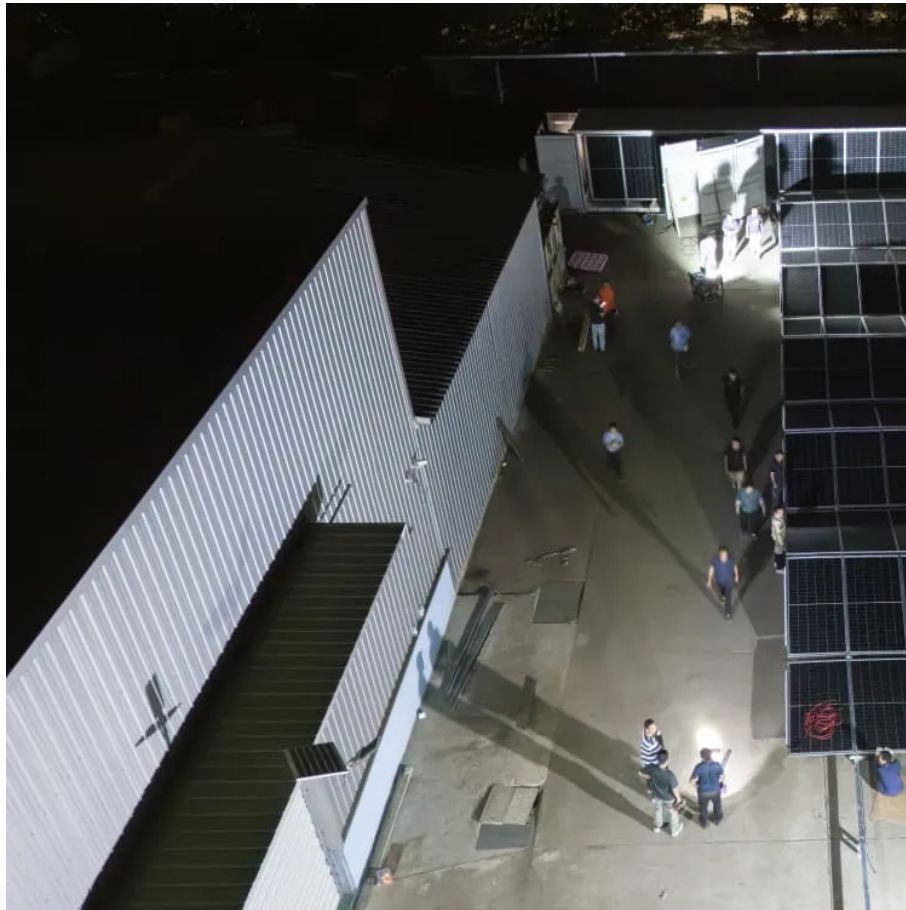


## A-Core Container

# Rwanda Power Station Powerhouse



## Overview

---

The Rusumo Hydroelectric Power Station (Kinyarwanda: Urugomero rw'amashanyarazi rwa Rusumo, French: Centrale hydroélectrique de Rusumo), also known as the Rusumo Power Station, is an operational hydropower plant, with initial capacity installation of 80 megawatts (110,000 hp).

## Rwanda Power Station Powerhouse

---

### Contact Us

---

For catalog requests, pricing, or partnerships, please visit:  
<https://www.a-core.pl>