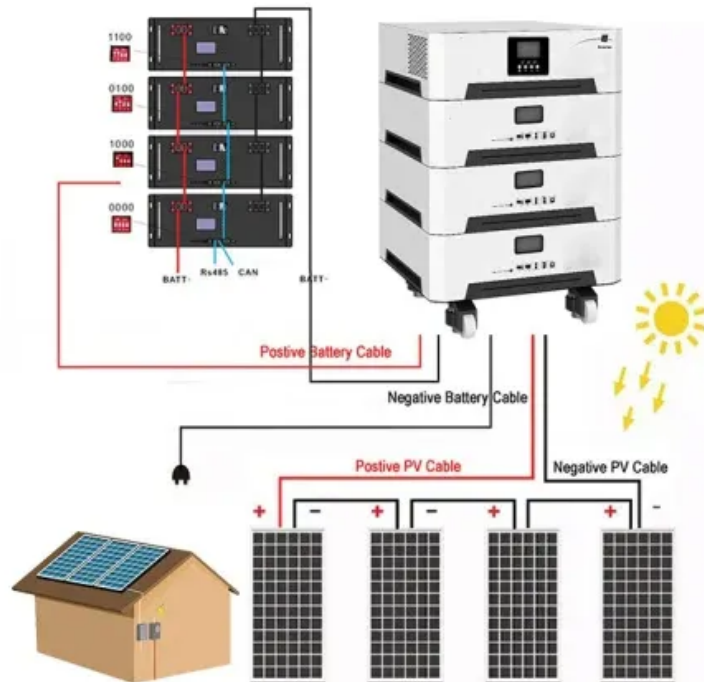


A-Core Container

Power battery cabinet installation requirements



Overview

What are the safety requirements related to batteries & Battery rooms?

Employers must consider exposure to these hazards when developing safe work practices and selecting personal protective equipment (PPE). That is where Article 320, Safety Requirements Related to Batteries and Battery Rooms comes in.

Do you need documentation before entering a battery room?

It is a requirement to have all the documentation in place prior to authorized personnel entering a battery room to perform a specific work task on a battery system under normal operating conditions. However, it is likely the employee will need to enter the battery room to deal with a battery system that is not operating normally.

Can a battery be placed in an ESWC?

The system's output may be able to be placed into an electrically safe work condition (ESWC), however there is essentially no way to place an operating battery or cell into an ESWC. Someone must still work on or maintain the battery system. Working on a battery should always be considered energized electrical work.

What are the risks of working with batteries?

Working around batteries can expose an employee to both electrical shock and arc flash hazards. A person's body might react to contact with dc voltage differently than from contact with ac voltage. Batteries can also expose employees to the hazards associated with the chemical electrolyte used in batteries.

What happens if you send an employee into a battery room?

Sending an employee who is trained only for the normal operating conditions into a battery room under thermal runaway, for example, is knowingly

exposing an unqualified person to risk of injury. The employer is responsible for protecting their employees from known or recognized hazards in the workplace.

Is working on a battery considered energized electrical work?

Working on a battery should always be considered energized electrical work. NFPA 70E ®, Standard for Electrical Safety in the Workplace®, Chapter 3 covers special electrical equipment in the workplace and modifies the general requirements of Chapter 1.

Power battery cabinet installation requirements

Contact Us

For catalog requests, pricing, or partnerships, please visit:
<https://www.a-core.pl>