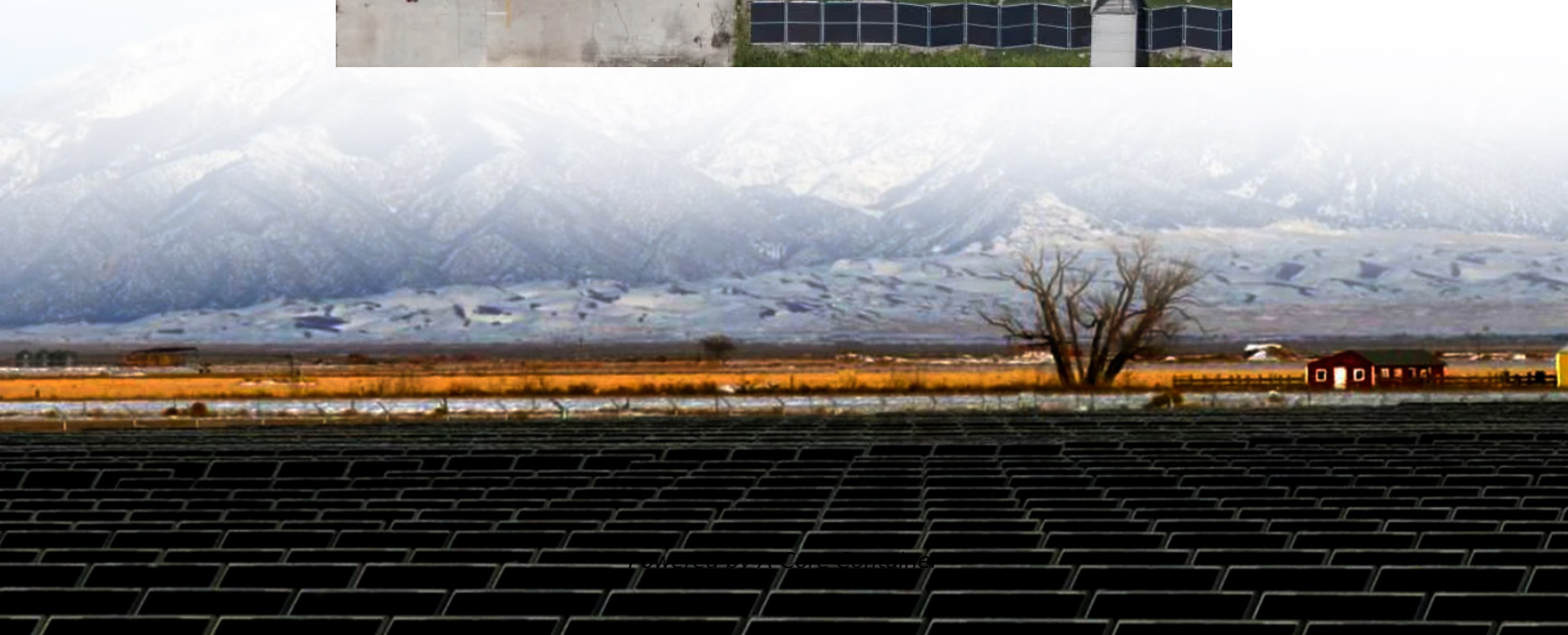


## A-Core Container

# Peru lithium-ion battery energy storage power station



## Overview

---

The BESS project will have an installed capacity of around 30 MWh, which will be installed at ENGIE Energía Perú's ChilcaUno Thermoelectric Power Plant, and will allow the plant to operate at full capacity, which translates into more efficient energy for the country, as well as contributing to improve the stability of the national power grid.

## Peru lithium-ion battery energy storage power station

---

### Contact Us

---

For catalog requests, pricing, or partnerships, please visit:  
<https://www.a-core.pl>