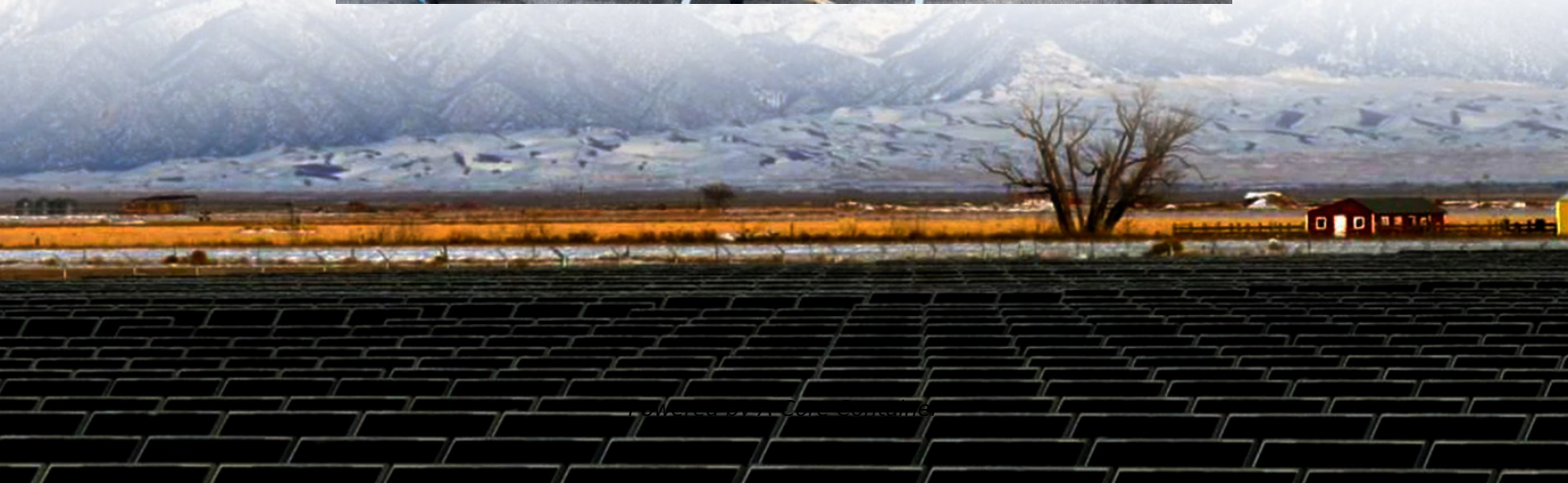
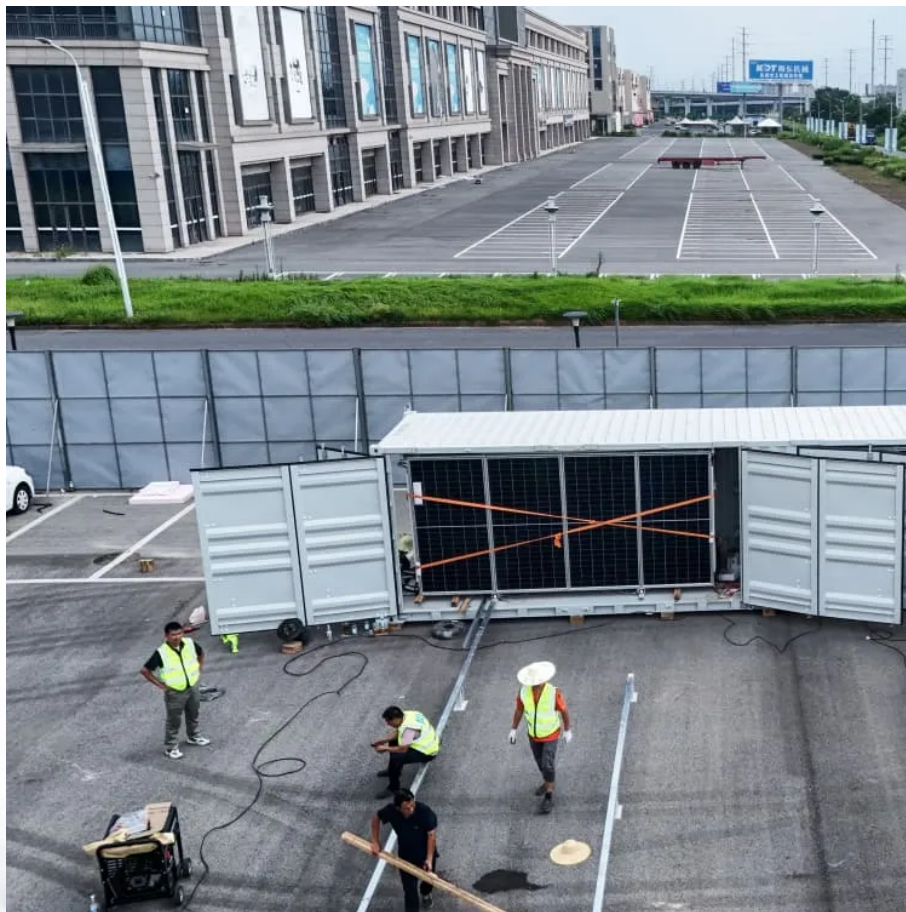


## A-Core Container

# Peak-shaving energy storage charging pile integrated machine



## Overview

---

How do energy storage charging piles work?

To optimize grid operations, concerning energy storage charging piles connected to the grid, the charging load of energy storage is shifted to nighttime to fill in the valley of the grid's baseline load. During peak electricity consumption periods, priority is given to using stored energy for electric vehicle charging.

Can energy storage reduce the discharge load of charging piles during peak hours?

Combining Figs. 10 and 11, it can be observed that, based on the cooperative effect of energy storage, in order to further reduce the discharge load of charging piles during peak hours, the optimized scheduling scheme transfers most of the controllable discharge load to the early morning period, thereby further reducing users' charging costs.

How to reduce charging cost for users and charging piles?

Based Eq. , to reduce the charging cost for users and charging piles, an effective charging and discharging load scheduling strategy is implemented by setting the charging and discharging power range for energy storage charging piles during different time periods based on peak and off-peak electricity prices in a certain region.

How does the energy storage charging pile's scheduling strategy affect cost optimization?

By using the energy storage charging pile's scheduling strategy, most of the user's charging demand during peak periods is shifted to periods with flat and valley electricity prices. At an average demand of 30 % battery capacity, with 50–200 electric vehicles, the cost optimization decreased by 18.7%–26.3 % before and after optimization.

Do energy storage charging pile optimization strategies reduce peak-to-Valley

ratios?

The simulation results demonstrate that our proposed optimization scheduling strategy for energy storage Charging piles significantly reduces the peak-to-valley ratio of typical daily loads, substantially lowers user charging costs, and maximizes Charging pile revenue.

How to calculate energy storage based charging pile?

Based on the real-time collected basic load of the residential area and with a fixed maximum input power from the same substation, calculate the maximum operating power of the energy storage-based charging pile for each time period: (1)  $P_m(t h) = P_{am} - P_b(t h) = P_{cm}(t h) - P_{dm}(t h)$

## Peak-shaving energy storage charging pile integrated machine

---

### Contact Us

---

For catalog requests, pricing, or partnerships, please visit:  
<https://www.a-core.pl>