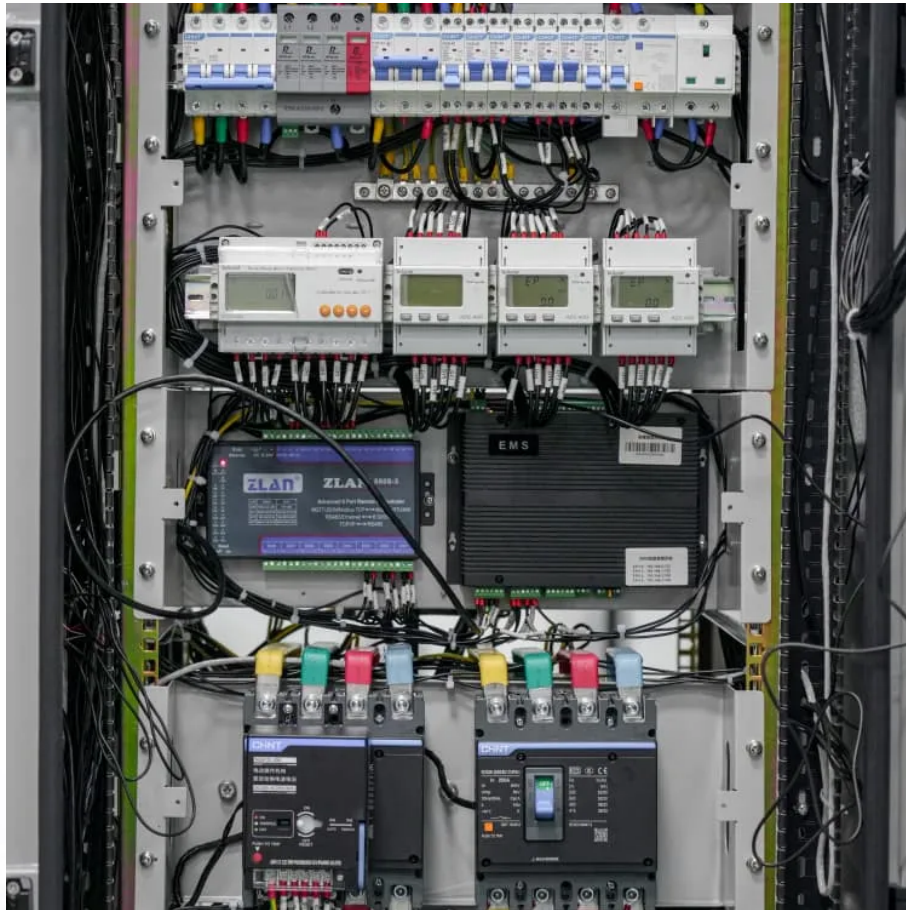


## A-Core Container

# Nigeria outdoor communication power supply BESS3kw



## Overview

---

Are telecommunication power sources a problem in Nigeria?

literature review on telecommunication power sources in Nigeria indicates that very little research and analysis has been completed on power losses/failures in Base Transceiver Station due to telecommunication equipment and complexes.

Why is E-site power supply used in Nigeria?

The main focus or reason why e-site power supply is mostly employed in Nigeria is to generally cut a great deal of cost and still maintain at least 99.6% performance as underperformance is highly un-recommended and attracts great loss to the site manager.

How are Base Transceiver Stations distributed in Nigeria?

They are distributed as follows based on their applications on sites in Nigeria: This is a Base Transceiver Station power system that has been designed in such a way that it comprises of one or two alternating current generating sets, the Automatic Transfer Switch (ATS), the Rectifier system, Back-up Batteries and the Breakers. 2.

Why are power supplies important for information and communication devices?

Power supplies for information and communication devices are important devices for providing stable power supply 24 hours a day, 365 days a year for the various communication devices used to provide data communication services, such as telephone and Internet.

## Nigeria outdoor communication power supply BESS3kw

---

### Contact Us

---

For catalog requests, pricing, or partnerships, please visit:  
<https://www.a-core.pl>