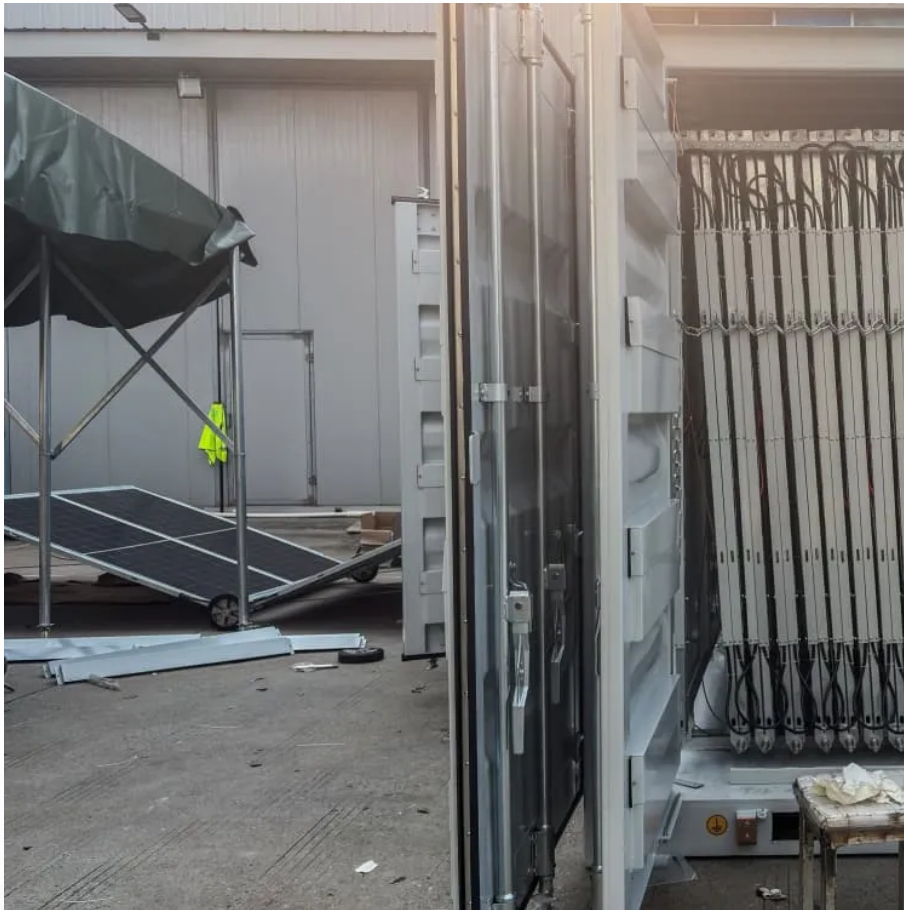


A-Core Container

New energy storage capacity **BESS**



Overview

Deployed global capacity for the first half of 2025 culminates to 86.7 GWh of battery energy storage system (BESS) capacity, representing a year-on-year increase of 54%.

Deployed global capacity for the first half of 2025 culminates to 86.7 GWh of battery energy storage system (BESS) capacity, representing a year-on-year increase of 54%.

BESS deployment data for 2024 and forecasts for 2025 have been released by BloombergNEF and the Energy Information Administration (EIA) respectively. The US added a record 49GW of new solar capacity in 2024, as renewable power contributed to more than 1,000TWh of the country's total electricity.

U.S. battery storage capacity has been growing since 2021 and could increase by 89% by the end of 2024 if developers bring all of the energy storage systems they have planned on line by their intended commercial operation dates. Developers currently plan to expand U.S. battery capacity to more than.

New energy storage capacity BESS

Contact Us

For catalog requests, pricing, or partnerships, please visit:
<https://www.a-core.pl>