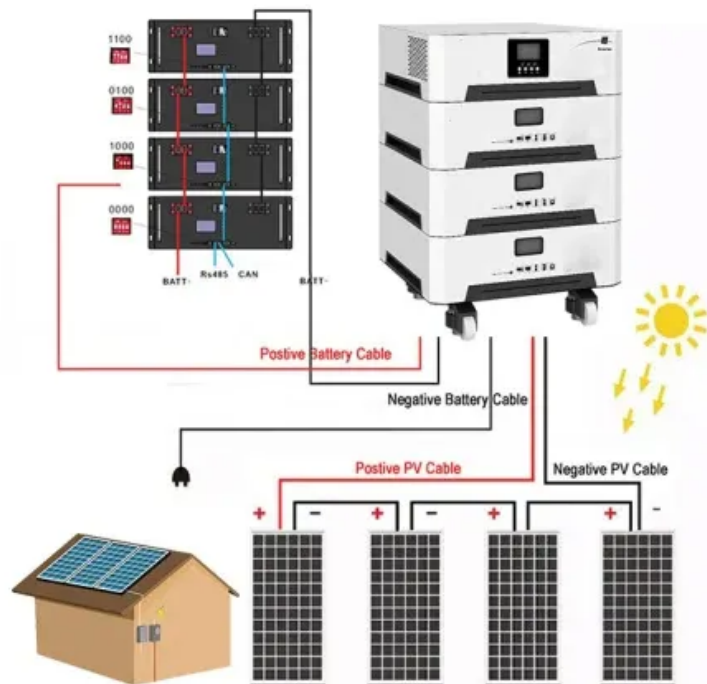


A-Core Container

Nanya Energy Storage Battery Effectiveness



Overview

With round-the-clock operations and megawatt-scale equipment, facilities like Nanya Port consume enough electricity daily to power small cities. But here's the kicker: traditional diesel generators just won't cut it anymore.

With round-the-clock operations and megawatt-scale equipment, facilities like Nanya Port consume enough electricity daily to power small cities. But here's the kicker: traditional diesel generators just won't cut it anymore.

With round-the-clock operations and megawatt-scale equipment, facilities like Nanya Port consume enough electricity daily to power small cities. But here's the kicker: traditional diesel generators just won't cut it anymore. Rising fuel costs and stricter emissions regulations have created a

conventional energy storage systems?

Nanotechnology-based Li-ion battery systems have emerged as an effective approach to efficient energy storage systems. Their advantages--longer lifecycle, rapid-charging capabilities, thermal stability, high energy density, and portability--make them an.

How effective is the energy storage battery?

Energy storage batteries offer significant advantages in modern energy management, characterized by 1. the ability to store energy for later use, 2. enhancing grid resilience through demand response capabilities, and 3. fostering renewable energy.

Accordingly, all smart seaports use an Energy Management System(EMS), a novel technology in the field of energy-related issues that employs intelligent methods and efforts for energy production, distribution, and consumption, as well as moving toward replacing renewables rather than fossil fuels to.

Over 10 years of specialized experience in green energy and EV charging solutions. Seasoned professionals with 10+ years in power electronics and energy management. 150,000 sqm facility with state-of-the-art automated

production lines. Full range of customizable AC, DC Fast, and Solar-Powered.

Are sodium metal-based batteries a good choice for stationary energy storage?

Sodium metal-based batteries have drawn much attraction as the perfect low-cost stationary energy storage choice because of their high theoretical specific capacity and low working potential. Are sodium-sulfur batteries a.

Nanya Energy Storage Battery Effectiveness

Contact Us

For catalog requests, pricing, or partnerships, please visit:
<https://www.a-core.pl>