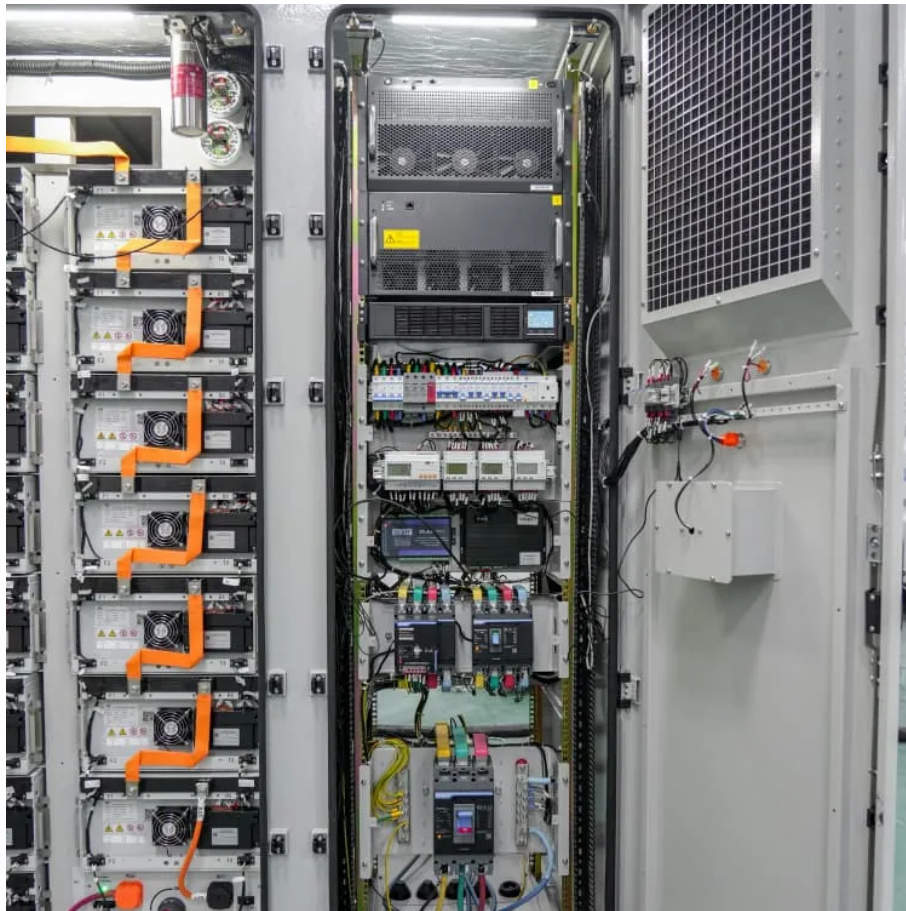


## A-Core Container

# Minimum 12 volt inverter



## Overview

---

Can I cook with electric appliances using an inverter?

Cooking is definitely possible with an inverter as long as the battery set is reasonably large and the inverter has a capacity of at least 2 kW.

Can I cook with electric appliances using an inverter?

Cooking is definitely possible with an inverter as long as the battery set is reasonably large and the inverter has a capacity of at least 2 kW.

As a rule of thumb, the minimum required battery capacity for a 12-volt system is around 20 % of the inverter capacity. For 24-volt inverters, it is 10 %. The battery capacity for a 12-volt Mass Sine 12/1200, for instance, is 240 Ah, while a 24-volt Mass Sine 24/1500 inverter would require at least.

Learning how to calculate inverter size for your needs can be a tricky task, especially if you're unfamiliar with how an inverter works or how much power you need to produce. Inverters are useful pieces of equipment, but you're likely to have questions about the necessary equipment in order to make.

In order to ensure that the capacity of your power inverter is sufficient to meet the required start up load, you must first determine the power consumption of the equipment or appliance you plan to operate. Power consumption is rated either in wattage or amperes, and information regarding the.

A 12-volt DC power inverter is an essential device for converting 12V direct current (DC) from a battery into 120V alternating current (AC), allowing you to power standard household appliances on the go. Whether you need to charge a laptop in your car, run a small refrigerator while camping, or.

The landscape for 12-volt inverter choices changed dramatically when high-wattage pure sine wave models entered the picture. I've tested a bunch in real-world situations—loading them with everything from small tools to sensitive electronics—so I can tell you what really matters. The BELTTT 2000W.

The inverter size calculator takes the guesswork out of choosing the right inverter. Simply select your appliances below, and you'll instantly see the inverter size you need. Standard 12v models top out around 3000w (24v/48v ~ 4000w). To proceed: Upgrade to a higher-voltage system (24 V/48 V) for a.

## Minimum 12 volt inverter

---

## Contact Us

---

For catalog requests, pricing, or partnerships, please visit:  
<https://www.a-core.pl>