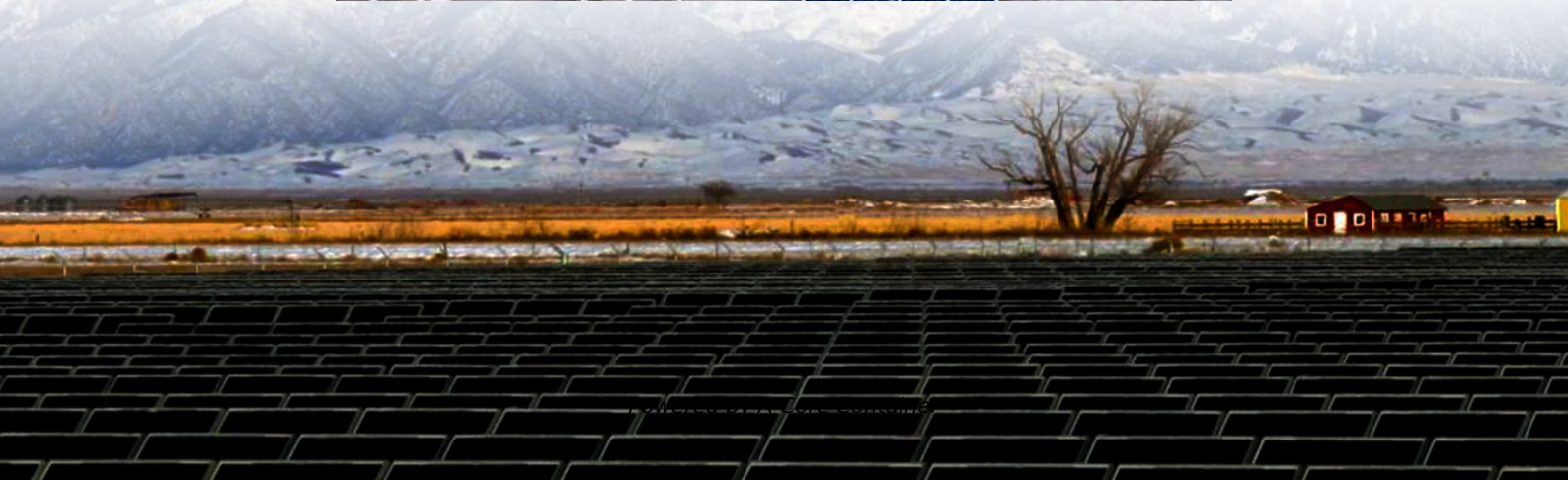
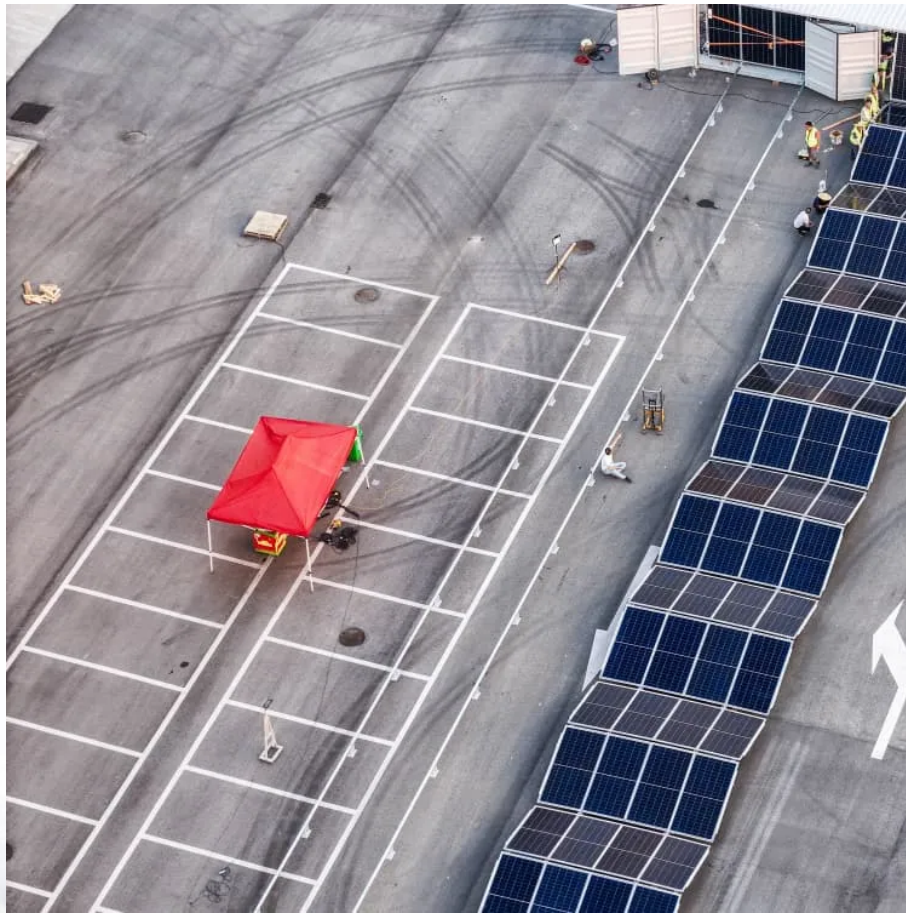


A-Core Container

Malawi Outdoor Energy Storage Power Supply Communication BESS



Overview

What is the Malawi Bess project?

The Malawi BESS project will guide the scale-up of BESS projects in the Consortium's participating countries. To alleviate energy poverty by 2030 and save a gigaton of CO₂ in low and middle-income countries, it is estimated that 90 GW of BESS must be developed to support the required 400 GW of renewable energy.

Is Malawi a proof point for geapp's Bess project?

By breaking ground for this BESS project (and its subsequent completion expected in 2025), Malawi is an important proof point for the BESS Consortium launched by GEAPP at COP28 to secure 5 gigawatts (GW) of BESS commitments in low and middle income countries (LMICs) by the end of 2024.

How can Malawi achieve a cleaner energy future?

The project will also contribute to a cleaner energy future for Malawi, reducing reliance on costly diesel generators, cutting carbon emissions by ~10,000 tonnes annually, and unlocking the full uptake of at least 100 MW of variable renewable energy, such as solar and wind power, into the grid.

How can collaboration improve the resilience of Malawi's grid?

By enhancing the stability and resilience of Malawi's grid, it demonstrates the power of collaboration in advancing energy access, reducing emissions, and supporting livelihoods.

Malawi Outdoor Energy Storage Power Supply Communication BESS

Contact Us

For catalog requests, pricing, or partnerships, please visit:
<https://www.a-core.pl>