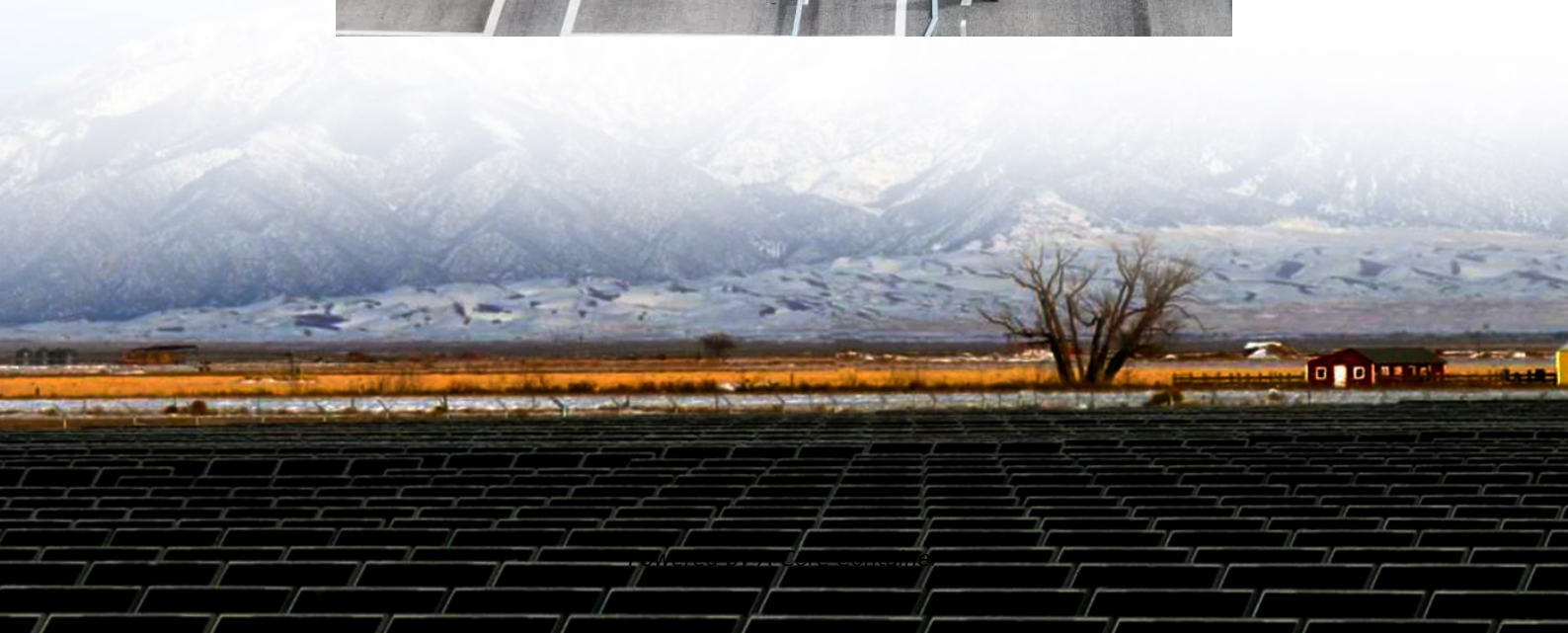
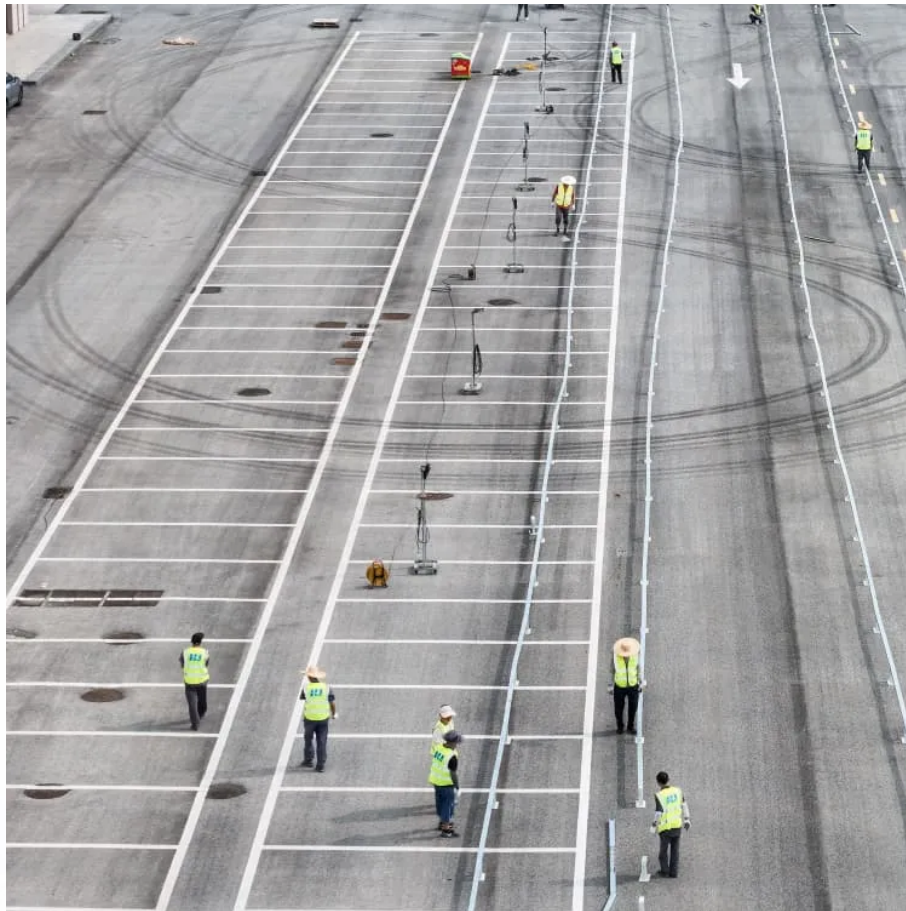


A-Core Container

Lithium battery 20 kWh inverter



Overview

With a compact, stackable design and compatibility with various inverters, this battery is ideal for grid-tied, off-grid, and backup power systems. Its wide temperature operating range, maintenance-free design, and scalable capacity make it a dependable choice for sustainable energy needs.

Lithium battery 20 kWh inverter

Contact Us

For catalog requests, pricing, or partnerships, please visit:
<https://www.a-core.pl>