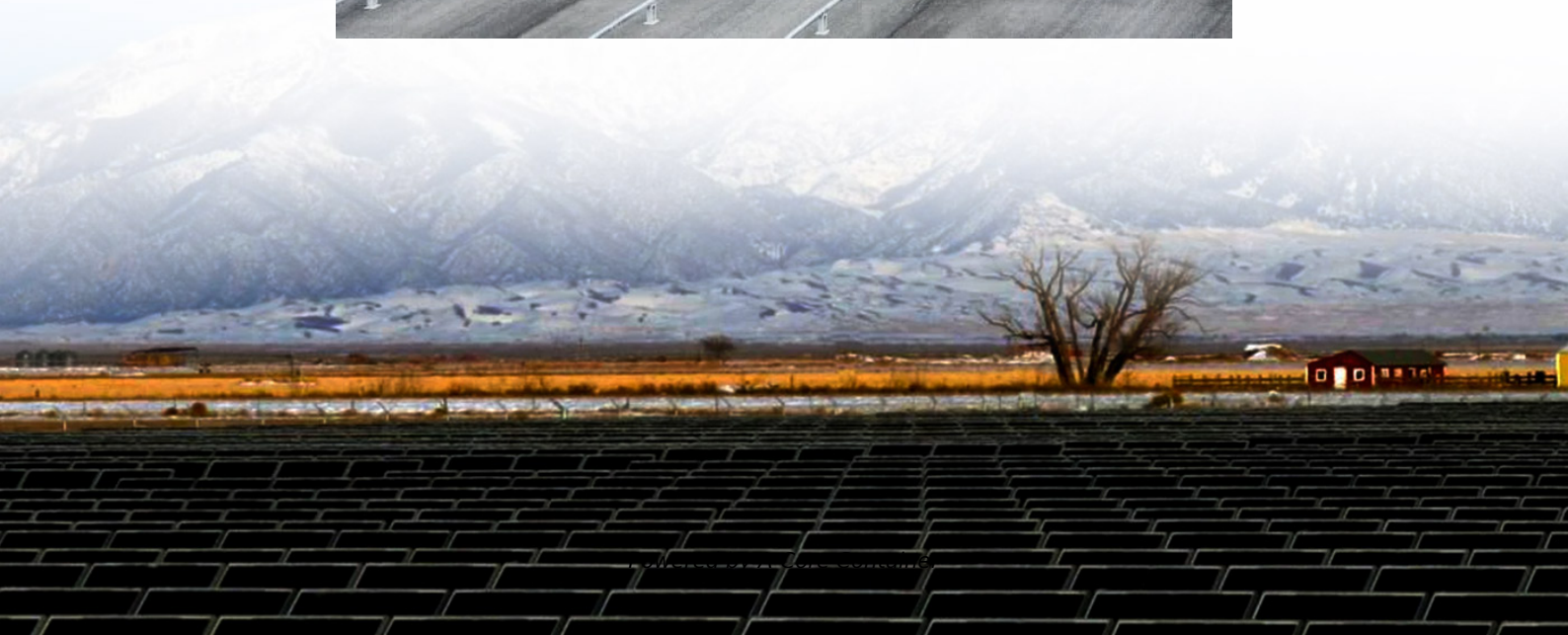
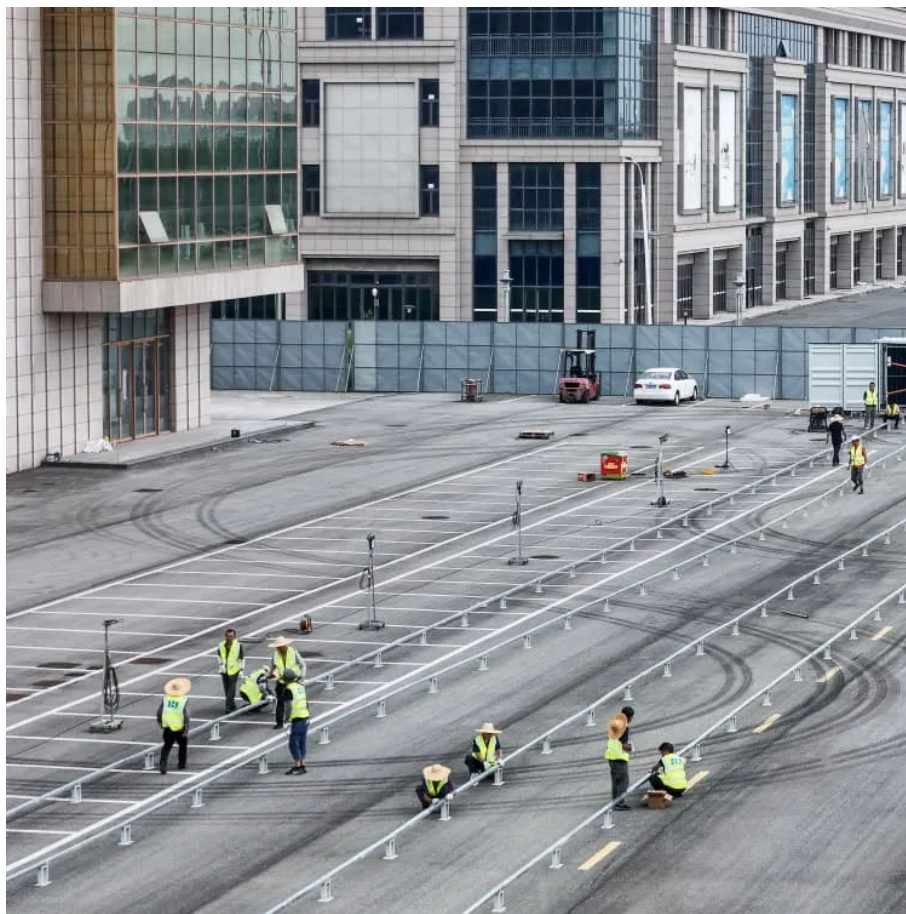


## A-Core Container

# Inverter output 220v 50hz



## Overview

---

What voltage does a 220V Inverter Supply?

The standard output voltage is 230 Volt, 50Hz with a pure sine wave. This means that this inverter supplies the same type of voltage as the wall socket. This allows any electrical device to work on it. What should you be aware of?

When choosing the right 220V inverter, these are the three most important points to consider:.

Which inverter circuit can convert 12V to 220VAC 50Hz?

There are four CD4047 inverter circuits that can convert 12V to 220VAC 50HZ, we use IC-4047 for oscillators and transistors drive the transformers to output. We have 4 circuits you can build easily with PCB. This is the inverter 100W circuit, use IC 4047 alike inverter 100W transistor I use MOSFET IRF540 instead Transistor 2N3055.

What is a 220V AC 50Hz timer?

220V AC 50Hz, ready to be applied to a load. The circuit below is a complete circuit diagram of this project. I use the IC-NE555 timer is a square wave frequency generator output of 50Hz. The frequency is determined by the R2 Resistor and C1 Capacitor. If your R2 is 150K, then the output is 47Hz.

What is a 24V 600W inverter?

24V 600w inverter with peak power 1200w, which is a modified sine wave, converts your car battery power to AC power 110/120 Volt or 220/230/240 Volt for options, with a safe charging design to give your device multi-protection. The modified sine wave inverter's output current is less than 0.1A and the max efficiency is 90%.

What is a 12V inverter?

12V Inverter. A 12V inverter is an electrical device that converts 12 volts of DC

power into AC power. The input power typically comes from a 12V battery. Modified sine wave power inverter can provide you 110/120V or 220/230V/240V AC power.

What is AC inverter?

This is AC Inverter. Input 12VDC from car battery to output 220V AC 50Hz or 60Hz at Square wave signal. The main part is CD4047 (or IC 4047 Series) and IC-LM358 and Transistor 2SC1061 and 2N3055. The transformer is 10V-CT-10V, Primary : 220V Secondary. and current 3A up for power output than 100W. C1 = 0.1uf metalized-film capacitor, 5% tolerance.

## Inverter output 220v 50hz

---

## Contact Us

---

For catalog requests, pricing, or partnerships, please visit:  
<https://www.a-core.pl>