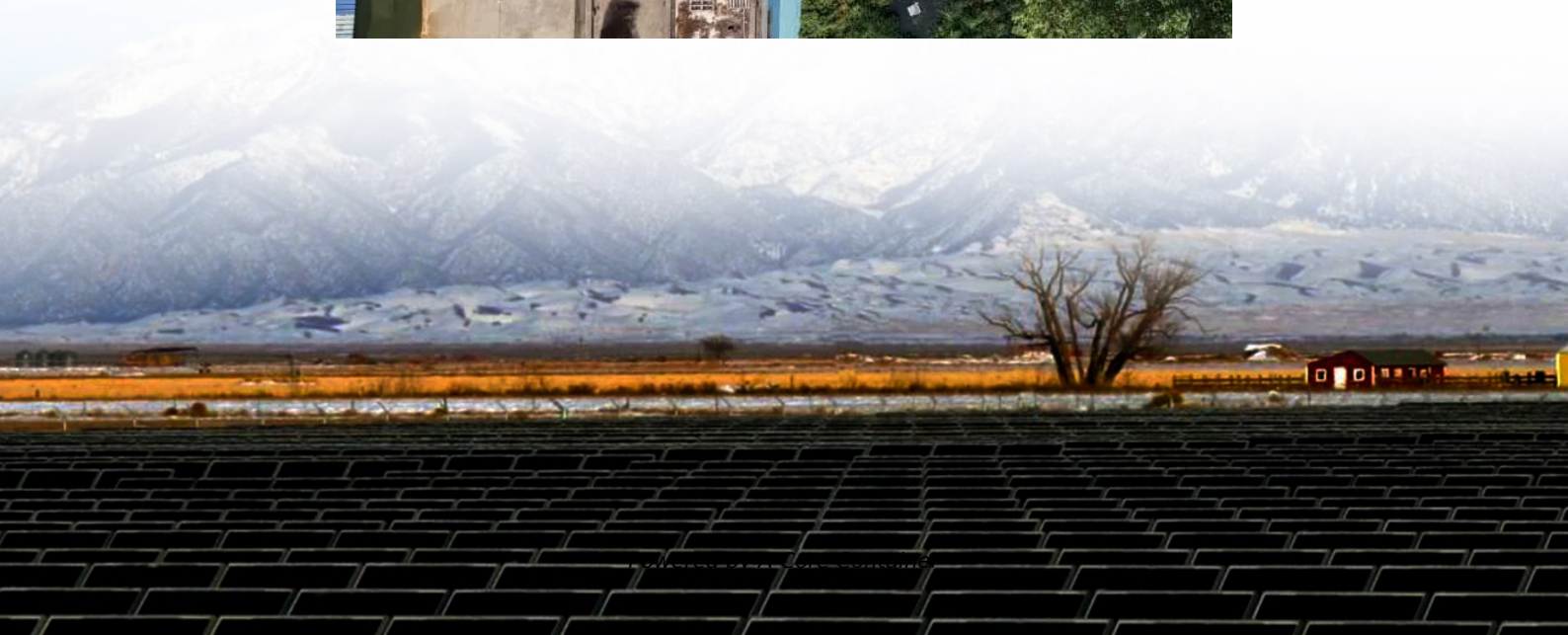
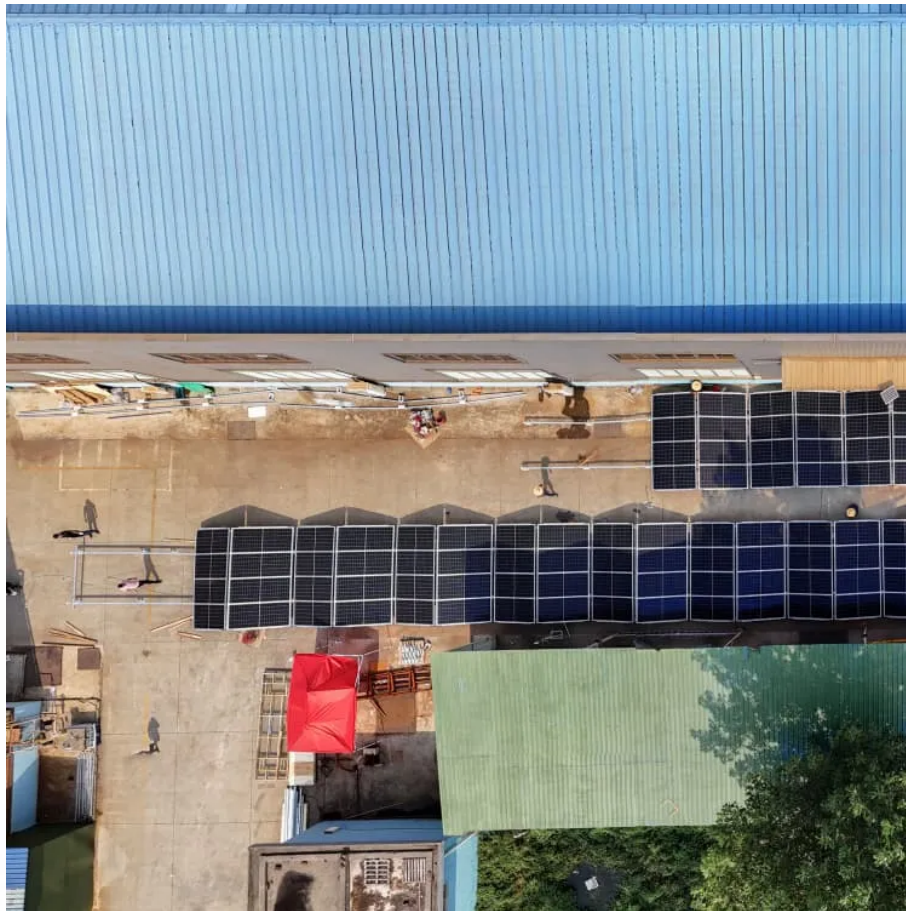


A-Core Container

Inverter delivery voltage



Overview

Understanding the inverter voltage is crucial for selecting the right equipment for your power system. Inverter voltage typically falls into three main categories: 12V, 24V, and 48V. These values signify the nominal direct current (DC) input voltage required for the inverter to.

Understanding the inverter voltage is crucial for selecting the right equipment for your power system. Inverter voltage typically falls into three main categories: 12V, 24V, and 48V. These values signify the nominal direct current (DC) input voltage required for the inverter to.

Many power inverters are rated for their output based on an impossible to achieve input voltage, such 13.0VDC. Unless your DC power source is being charged, it will never be at 13.0V State of Charge (SoC). A fully charged 12VDC power source will have an effective open circuit voltage (after any.

For inverters designed for residential use, the output voltage is 120 V or 240 V at 60 Hz for North America. It is 230 V at 50 Hz for many other countries. Peak Efficiency The peak efficiency is the highest efficiency that the inverter can achieve. Most grid-tie inverters have peak efficiencies.

12VDC to 120VAC Inverter is a common device that converts 12V DC power to AC power with a nominal output of 120V. 120 volts AC is the standard household voltage in many countries, including the United States. This conversion is essential for operating household appliances, electronic equipment, and.

Inverter voltage, uses, types of inverters based on voltage, and tips on choosing the best inverter voltage for you are mentioned in this article. Last Updated on December 16, 2024 by Anastasia The term inverter voltage in electric power systems world is a familiar thing. However, some people still.

Let's embark on a comprehensive journey to unravel the mysteries surrounding inverter voltage, exploring its nuances, applications, and the Tycorun inverter's unique characteristics. What is a 12v to 240v inverter?

How many volts does an inverter use?

What is the rated input voltage of an inverter?

.

Enter the values of DC voltage, V_{DC} (V) and modulation index, m to determine the value of Inverter voltage, V (V). Inverter voltage (V) is an essential concept in electrical engineering, particularly in the design and operation of power electronics systems. It describes the output voltage of an.

Inverter delivery voltage

Contact Us

For catalog requests, pricing, or partnerships, please visit:
<https://www.a-core.pl>