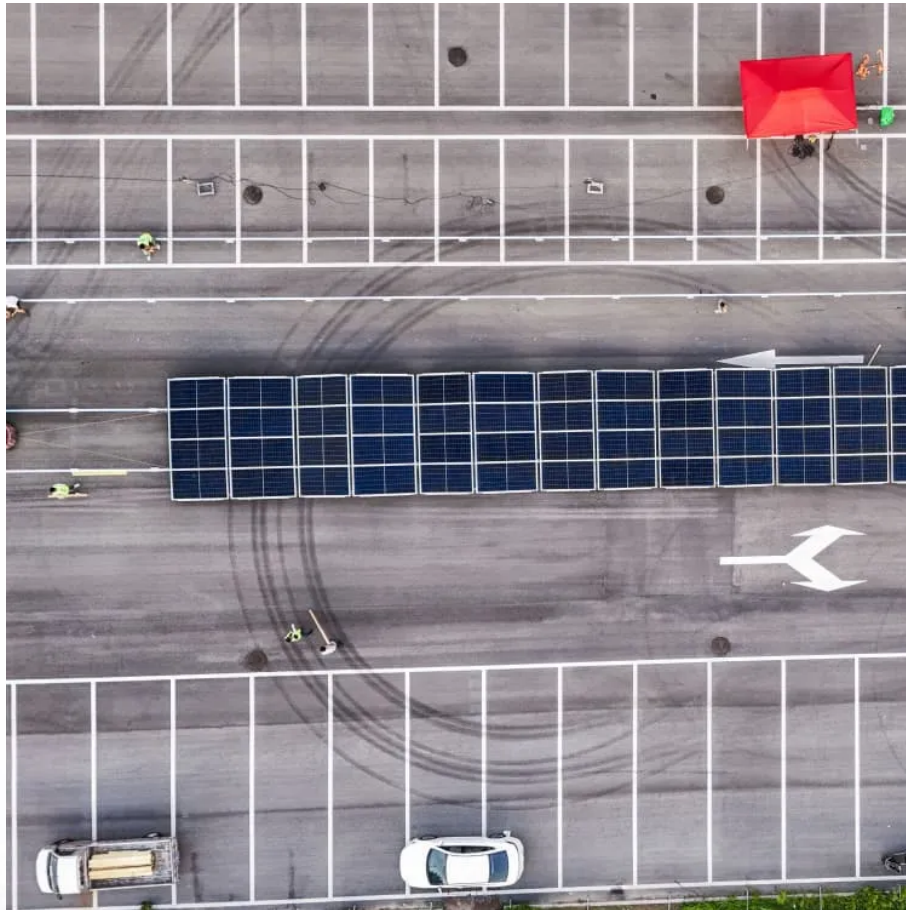


A-Core Container

Hybrid energy architecture of communication base stations



Overview

The telecom tower hybrid power system represents the next generation of network energy architecture—integrating renewable energy, intelligent control, and reliable battery storage to achieve both sustainability and cost efficiency.

The telecom tower hybrid power system represents the next generation of network energy architecture—integrating renewable energy, intelligent control, and reliable battery storage to achieve both sustainability and cost efficiency.

Powering telecom base stations has long been a critical challenge, especially in remote areas or regions with unreliable grid connections. Telecom operators need continuous, reliable energy to keep communications running 24/7. Enter hybrid energy systems—solutions that blend renewable energy with.

A hybrid power system integrates multiple energy sources—typically solar PV, battery storage, and diesel generation —under an intelligent energy management controller. The system is designed to balance renewable energy input, optimize fuel usage, and ensure uninterrupted power to telecom base.

With the rapid development of the digital new infrastructure industry, the energy demand for communication base stations in smart grid systems is escalating daily. The country is vigorously promoting the communication energy storage industry. However, the energy storage capacity of base stations is.

Investigates renewable energy systems as a source for powering communication stations. This is a preview of subscription content, log in via an institution to check access. This book looks at the challenge of providing reliable and cost-effective power solutions to expanding communications networks.

The communication base station hybrid system emerges as a game-changer, blending grid power with renewable sources and intelligent energy routing.

But does this technological fusion truly solve the 37% energy waste plaguing conventional base stations?

Modern networks face three critical challenges.

part of this energy consumption, are equipped with renewable energy (RE) systems. Important research efforts have been done to enhance the utilization of RE. However, to the best of our knowledge, these efforts did not take into consideration partially RE-equipped systems. The latter is of great.

Hybrid energy architecture of communication base stations

Contact Us

For catalog requests, pricing, or partnerships, please visit:
<https://www.a-core.pl>