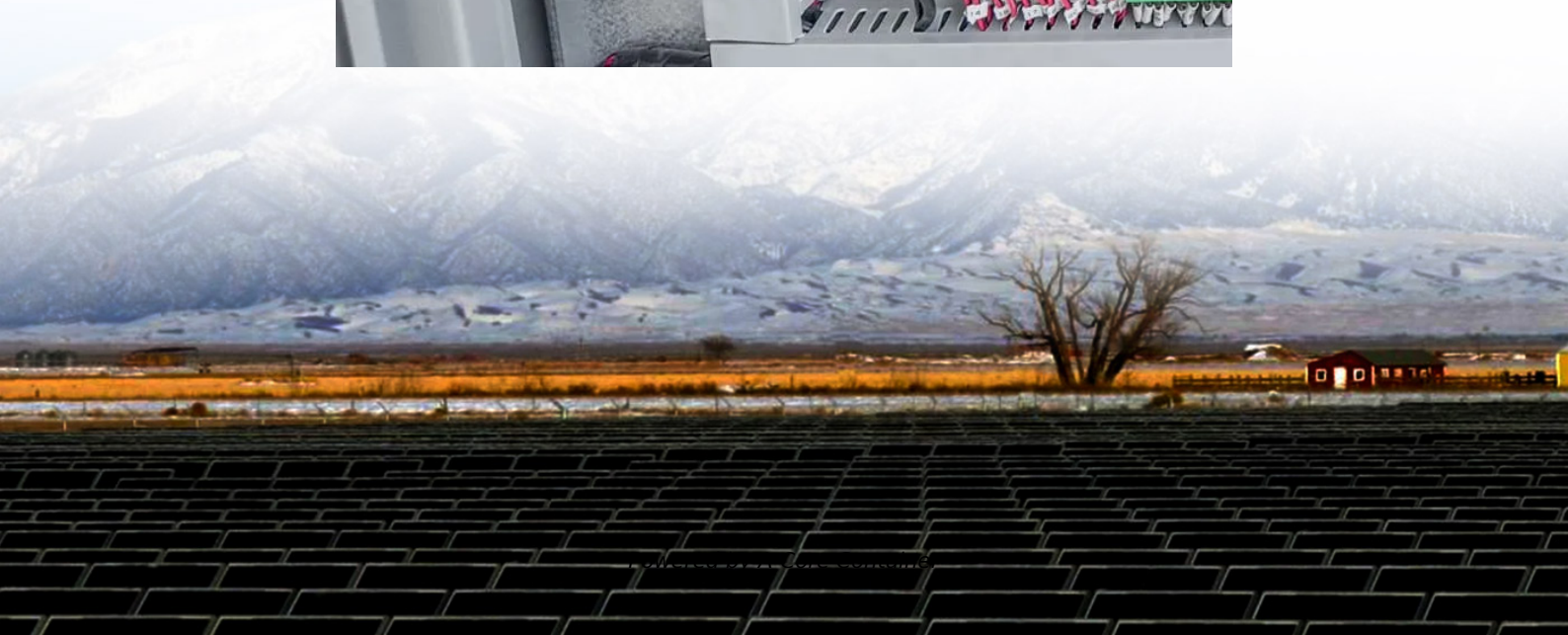
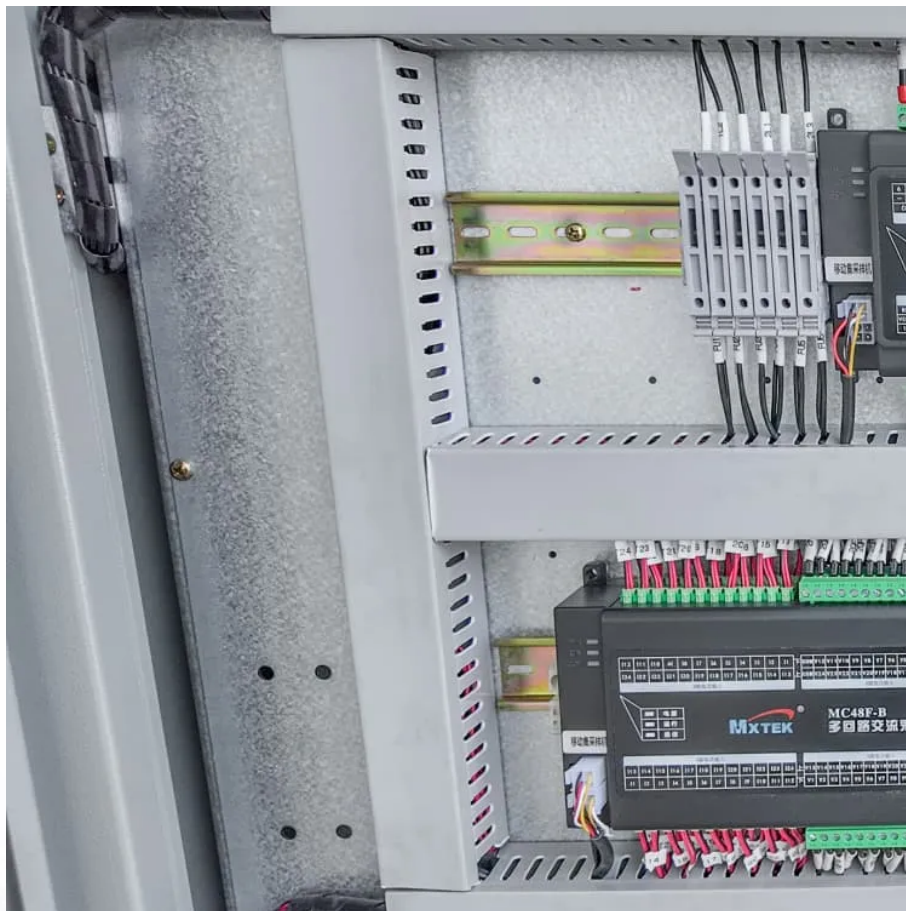


A-Core Container

Huawei grid-connected inverter outdoor installation



Overview

How do I connect an AC switch to a Huawei inverter?

To ensure that the inverter can be safely disconnected from the power grid when an exception occurs, connect an AC switch to the AC side of the inverter. Select an appropriate AC switch in accordance with local industry standards and regulations. Huawei recommends the following switch specifications:.

How do you install a solar inverter?

Install the solar inverter vertically or at a maximum back tilt of 75 degrees to facilitate heat dissipation. Do not install the solar inverter at forward tilted, excessive back tilted, side tilted, horizontal, or upside down positions. Reserve enough space around the solar inverter for installation and heat dissipation.

Why is my solar inverter in grid-tied mode?

The solar inverter is in grid-tied mode. If the alarm/maintenance indicator is red, an environmental fault at the AC side of the solar inverter is generated. The solar inverter is not in grid-tied mode. If the alarm/maintenance indicator is red, an internal fault at the AC side of the solar inverter is generated.

How do I connect a solar inverter WLAN?

Obtain the initial password for connecting to the solar inverter WLAN from the label on the side of the solar inverter. Use the initial password upon first power-on and change it immediately after login. To ensure account security, change the password periodically and keep the new password in mind.

How do I connect my solar inverter to the sun2000?

Access Device Commissioning screen. Connect to the solar inverter WLAN and log in to the device commissioning screen as the installer user. When connecting to the SUN2000 directly from the mobile phone, keep the mobile phone visible within 3 meters of the SUN2000 to ensure the communication quality between the app and SUN2000.

Are grid tied inverters safe?

Yes, grid-tied inverters are safe to use. They are designed with several safety features such as anti-islanding protection and automatic disconnection from the grid in case of a power outage. These measures ensure the safety of not only the system but also the general public. How Long Does a Grid-Tied Inverter Last?

Huawei grid-connected inverter outdoor installation

Contact Us

For catalog requests, pricing, or partnerships, please visit:
<https://www.a-core.pl>