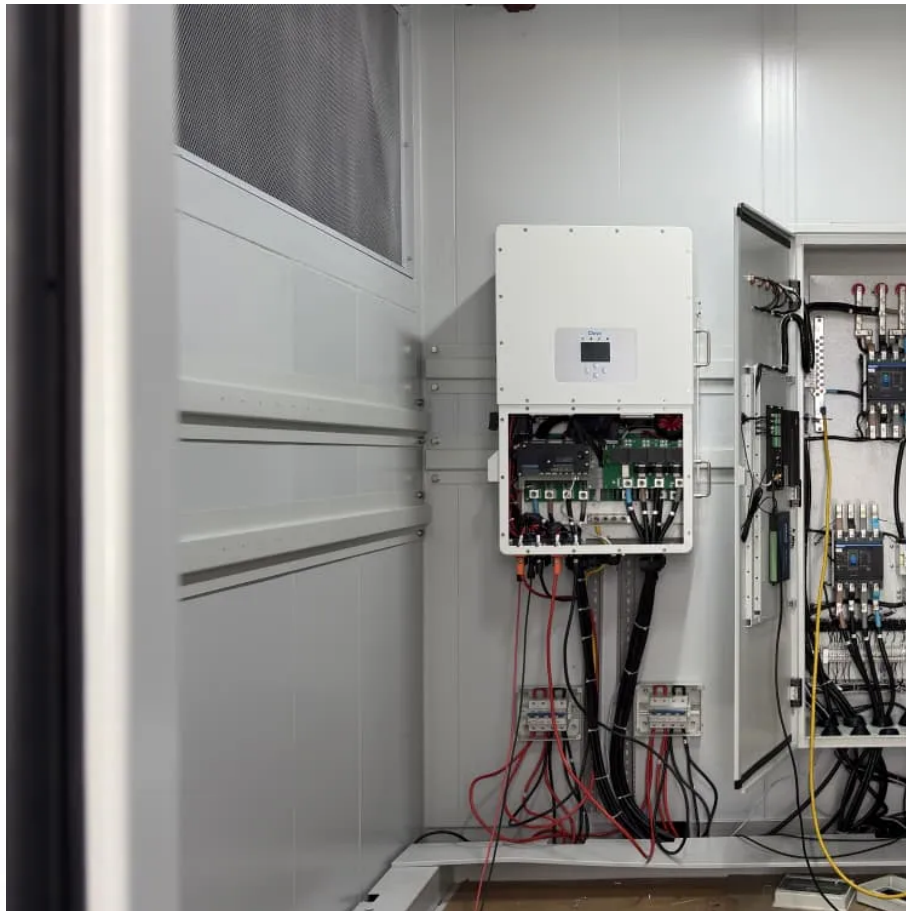


A-Core Container

Huawei flow battery automatic



Overview

To enable this feature, go to Settings > Battery > More battery settings and enable Smart Charge. To prolong the battery's lifespan, it's recommended that you avoid keeping the battery fully charged at all times. How to monitor battery life on Huawei devices?

2. AccuBattery: This tool is a popular choice for monitoring battery life on Huawei devices. AccuBattery provides detailed information about battery wear, actual capacity and power consumption of applications. Additionally, it offers a smart charging feature that helps extend battery life by preventing overcharging.

What is Huawei battery health?

With Huawei Battery Health, users can see detailed information about battery capacity, power consumption of apps, and receive suggestions to optimize usage. Additionally, the tool includes battery calibration and smart power management features. 2. AccuBattery: This tool is a popular choice for monitoring battery life on Huawei devices.

How to keep your Huawei phone battery healthy?

Maintaining battery health improves your Huawei device performance. Follow these practical tips to ensure your battery lasts longer. Charge between 20% and 80% to optimize battery life. Avoid overnight charging to prevent overcharging. Use the original charger and cable for efficient charging.

How to calibrate the battery of a Huawei Device?

Battery calibration consists of restoring the maximum capacity of the battery, which can help solve problems such as inconsistent battery life or insufficient fast charging. To calibrate the battery of your Huawei device, follow these steps: First, fully charge your Huawei device until it reaches 100% battery.

How to optimize battery life on Huawei phone?

Battery optimization: The Huawei phone offers a battery optimization function that allows you to manage and control battery consumption. You can access this feature by going to Settings > Battery > Battery Optimization. Here, you can select specific applications to optimize consumption and extend battery life. 3.

How long does a Huawei phone battery last?

Many users have praised its battery performance, noting that it can last a full day with regular use. In addition, it has Huawei's fast charging technology, which allows you to charge the battery quickly and efficiently. 11. Common issues that can affect battery life on Huawei devices Problem #1: Slow battery charging

Huawei flow battery automatic

Contact Us

For catalog requests, pricing, or partnerships, please visit:
<https://www.a-core.pl>