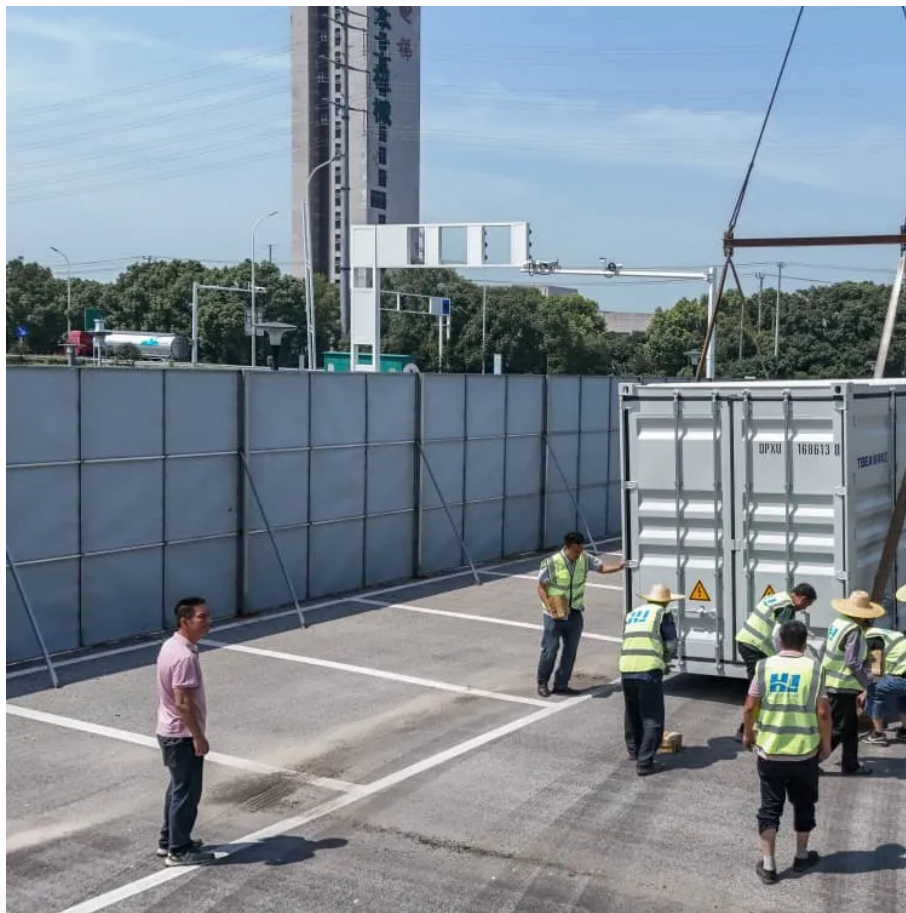


A-Core Container

How to install batteries for communication base stations



Overview

Telecom battery installation ensures uninterrupted power for communication networks. Key steps include selecting the right battery type (like VRLA or lithium-ion), adhering to safety protocols, proper mounting, and testing.

How to install batteries for communication base stations

Contact Us

For catalog requests, pricing, or partnerships, please visit:
<https://www.a-core.pl>