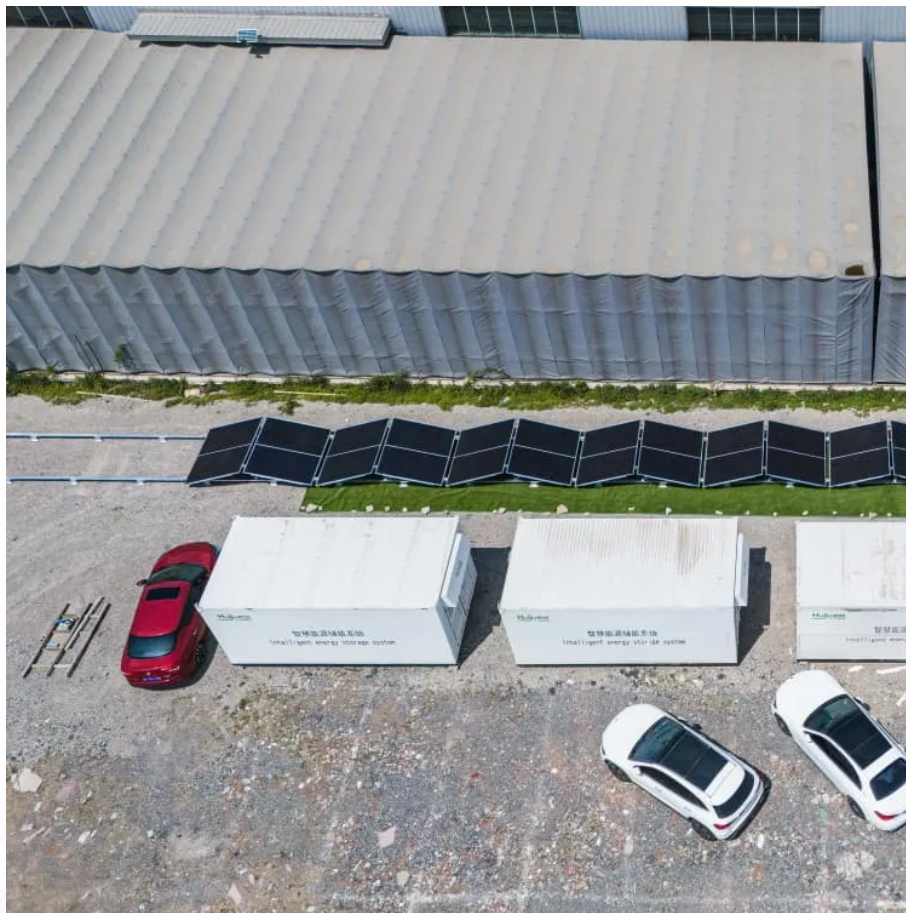


A-Core Container

How much electricity does 250 watts of solar energy generate



Overview

A 250-watt solar panel will produce 1000 watts or 1kWh of power with 5 hours of peak sunlight and 1.4kWh in a whole day. The output will vary from location to location (because of the no. of peak sun hours) and the tilt angle of your solar panels.

A 250-watt solar panel will produce 1000 watts or 1kWh of power with 5 hours of peak sunlight and 1.4kWh in a whole day. The output will vary from location to location (because of the no. of peak sun hours) and the tilt angle of your solar panels.

A 250-watt solar panel will produce 1000 watts or 1kWh of power with 5 hours of peak sunlight and 1.4kWh in a whole day. The output will vary from location to location (because of the no. of peak sun hours) and the tilt angle of your solar panels. This is the average number that you can expect from.

The power rating of solar panels is in “Watts” or “Wattage,” which is the unit used to measure power production. These days, the latest and best solar panels for residential properties produce between 250 and 400 Watts of electricity. While solar panel systems start at 1 KW and produce between 750.

Solar panels degrade slowly, losing about 0.5% output per year, and often last 25–30 years or more. Most residential panels in 2025 are rated 250–550 watts, with 400-watt models becoming the new standard. A 400-watt panel can generate roughly 1.6–2.5 kWh of energy per day, depending on local.

Now, the amount of electricity in terms of kWh any solar panel will produce depends on only these two factors: Solar Panel Size (Wattage). Most common solar panel sizes include 100-watt, 300-watt, and 400-watt solar panels, for example. The bigger the rated wattage of a solar panel, the more kWh.

Use our free Solar Energy Calculator to find how much power your panels can generate daily, monthly, or yearly. Simple, accurate, and beginner-friendly. Solar energy is one of the cleanest ways to power your home or business. But have you ever wondered how much energy your solar panels actually.

Residential solar panels typically produce between 250 and 400 watts per hour—enough to power a microwave oven for 10–15 minutes. As of 2020, the average U.S. household uses around 30 kWh of electricity per day or approximately 10,700 kWh per year. Most residential solar panels produce electricity. How much electricity does a 250 watt solar panel produce?

Multiply 250×6 , and we can calculate that this panel can produce 1,500 Wh, or 1.5 kWh of electricity per day. On a cloudy day, solar panels will only generate between 10% and 25% of their normal output. 3 For the same 250-watt panel with six hours of cloudy weather, you may only get 0.15-0.37 kWh of electricity per day.

How much energy does a 100 watt solar system produce?

A 100-watt solar panel installed in a sunny location (5.79 peak sun hours per day) will produce 0.43 kWh per day. That's not all that much, right?

However, if you have a 5kW solar system (comprised of 50 100-watt solar panels), the whole system will produce 21.71 kWh/day at this location.

How many Watts Does a solar panel produce?

The optimal solar panels produce 250 to 400 watts of electricity. However, this output can vary based on factors such as the panel type, angle, climate, etc. To calculate the rough estimate of a solar panel's daily watt-hour output, multiply its power in watts by the average hours of direct sunlight.

How much energy does a 300 watt solar panel produce?

A 300-watt solar panel will produce anywhere from 0.90 to 1.35 kWh per day (at 4-6 peak sun hours locations). A 400-watt solar panel will produce anywhere from 1.20 to 1.80 kWh per day (at 4-6 peak sun hours locations). The biggest 700-watt solar panel will produce anywhere from 2.10 to 3.15 kWh per day (at 4-6 peak sun hours locations).

How much energy does a solar panel produce a day?

Here are some examples of individual solar panels: A 300-watt solar panel will produce anywhere from 0.90 to 1.35 kWh per day (at 4-6 peak sun hours locations). A 400-watt solar panel will produce anywhere from 1.20 to 1.80 kWh per day (at 4-6 peak sun hours locations).

How much energy does a 500 watt solar panel produce?

Based on our energy output estimates for a location with five sunlight hours, a 500-watt solar panel would produce approximately 2.5 kWh: $500 \text{ watts} \times 5 \text{ hours} = 2,500 \text{ watts}$ OR approximately 2.5 kWh per day. How can you increase solar panel efficiency?

How much electricity does 250 watts of solar energy generate

Contact Us

For catalog requests, pricing, or partnerships, please visit:
<https://www.a-core.pl>