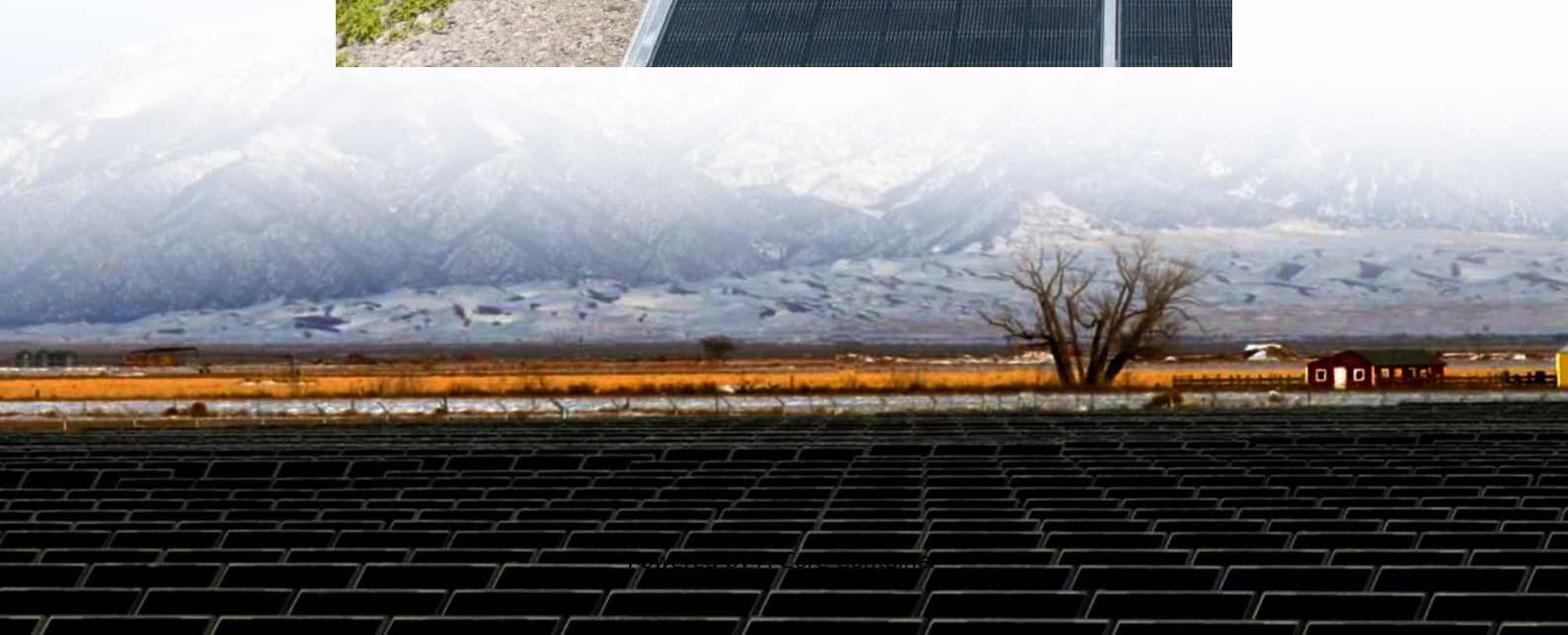


## A-Core Container

**How many watts can a 12v inverter convert to at most**



## Overview

---

A typical 12-volt car battery can safely support an inverter ranging from about 150 watts up to 600 watts for regular use without harming the battery. How much power does a 12V inverter use?

For example: If you're running a 1500W inverter on your 12v battery with 1000 watts of total AC load. So your inverter will be consuming 83 amps (amps = watts/battery volts) from the battery for which you'll need a very thick cable. Using a thin cable in this scenario can damage the inverter or you'll not be able to run your load.

How many amps in a 48 volt inverter?

Now, maximum amp draw (in amps) = (1500 Watts ÷ Inverter's Efficiency (%)) ÷ Lowest Battery Voltage (in Volts) = (1500 watts / 95% ) / 20 V = 78.9 amps. B. 100% Efficiency In this case, we will consider a 48 V battery bank, and the lowest battery voltage before cut-off is 40 volts. The maximum current is, = (1500 watts / 100% ) / 40 = 37.5 amps.

How many watts in a 12 volt battery?

So if you have a 12v 100Ah lithium battery you can use all 1200 watts of power but if you have a lead-acid type then make it half (600 watts) Related Post: Amps To Watts Calculator: How Many Watts In A 12-volt Battery?

How long will an inverter last on a battery?

To calculate how long will an inverter last on a battery using this formula.

What is the maximum current drawn by a 1500 watt inverter?

The maximum current drawn by a 1500-watt inverter is influenced by the following factors: Maximum Amp Draw for 85%, 95% and 100% Inverter Efficiency A. 85% Efficiency Let us consider a 12 V battery bank where the lowest battery voltage before cut-off is 10 volts. The maximum current is.

How many amps does a 1200 watt inverter draw?

The same inverter with a 1200 Watt load would draw 120 (60) Amps, which would be the same amount as a 1200 Watt inverter at load capacity. And for a 2000w 12v pure sine wave inverter?

We think you get the picture. The 2000 watt inverter amp draw depends on its watt load.

Does an inverter convert a battery into a 120 volt battery?

Our batteries come in different voltages (12,24, & 48v) But AC appliances required 120 volts (because our grid power comes in 120 volts). So an inverter will convert the lower voltage of the battery into 120 volts in order to run AC appliances If playback doesn't begin shortly, try restarting your device.

## How many watts can a 12v inverter convert to at most

---

## Contact Us

---

For catalog requests, pricing, or partnerships, please visit:  
<https://www.a-core.pl>