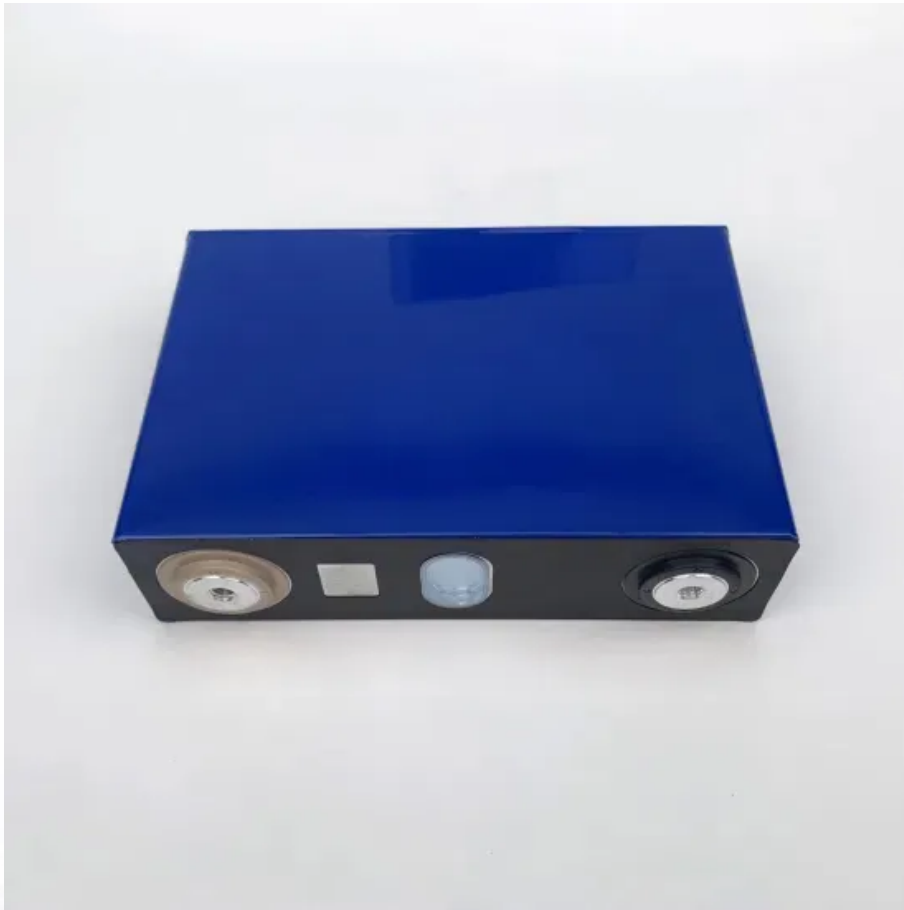


A-Core Container

Georgia Portable Power Cabinet Recommendation



Overview

If you're looking for reliable portable power stations for home backup in 2025, I recommend options like the Jackery Explorer 1000, EF ECOFLOW Delta Pro, and AFERIY P210, which offer high capacities, fast recharging, and durable Lithium Iron Phosphate batteries. What is the best portable power station for home backup?

For those who need reliable power without the bulk, the Anker SOLIX C1000 delivers a surprising punch in a small package. It's easily one of the best lightweight portable power stations for home backup and is especially suited for apartments, travel trailers, or short-term outages.

How much power does a portable power station need?

For basic emergency use (lights, phone charging, small medical devices), a 300Wh to 500Wh station is sufficient. To run larger appliances like a fridge or microwave, go for 1000Wh or more. Can I use a portable power station while it's charging?

Yes.

Why should you buy a portable power station?

Bring big backup power with you with these expert-recommended portable power stations, which can store enough power to charge electronics, appliances, and more.

Can a portable power station run appliances?

A portable power station can run most essential home or RV appliances, as long as their power draw doesn't exceed the unit's continuous output. High-wattage appliances like space heaters, large air conditioners, or electric ovens typically require a generator with 3000W or more, or may not be compatible at all.

What should you look for when buying a portable power station?

So, we know what to look for when it comes to technology for rural locations and hostile environments. We test the best portable power stations on volume, weight, battery chemistry, and additional feature sets. Before writing any review, we try to fully understand the unit to describe each device's pros and cons best and accurately compare them.

What are the performance metrics for portable power stations?

Currently, we look at two main performance metrics for portable power stations: charge time and discharge capacity. Every company that sells portable power stations provides the expected number of watt-hours its products are supposed to last. That can vary from as low as 240 watt hours to as many as 2,000 watt hours for a larger power station.

Georgia Portable Power Cabinet Recommendation

Contact Us

For catalog requests, pricing, or partnerships, please visit:
<https://www.a-core.pl>