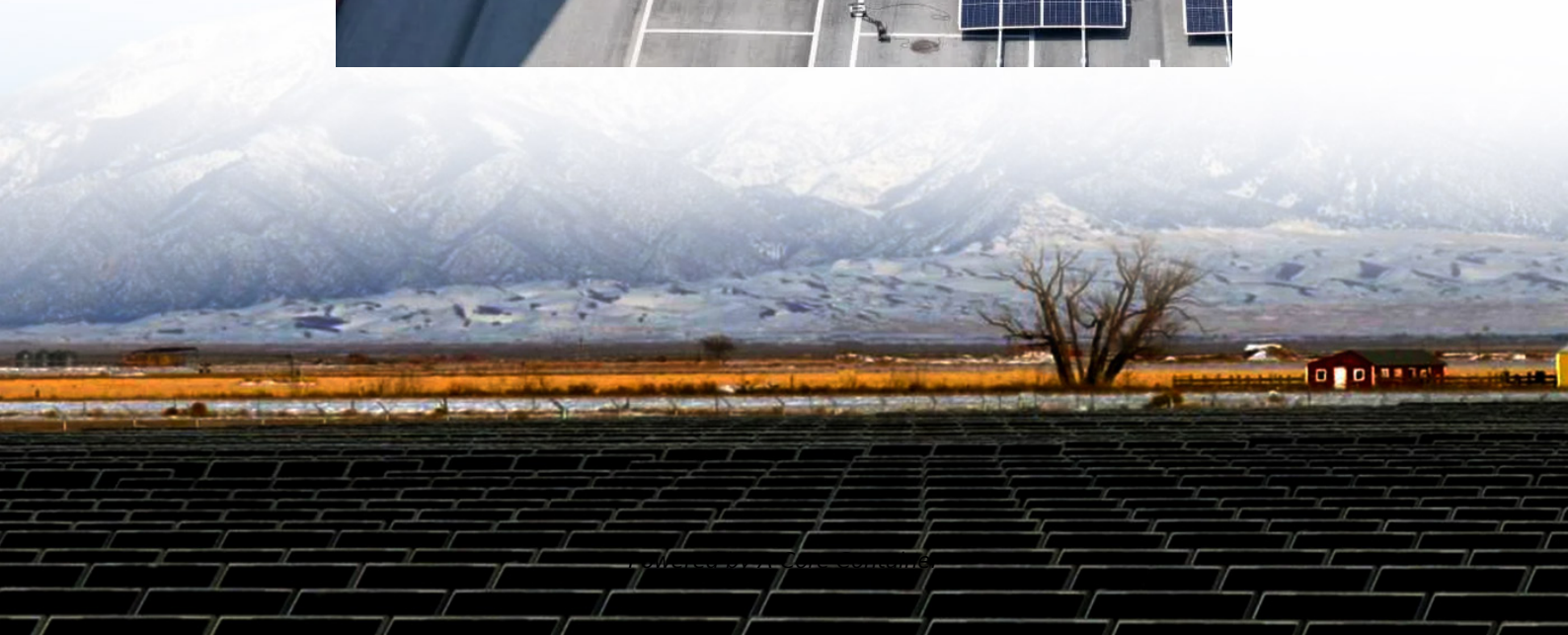
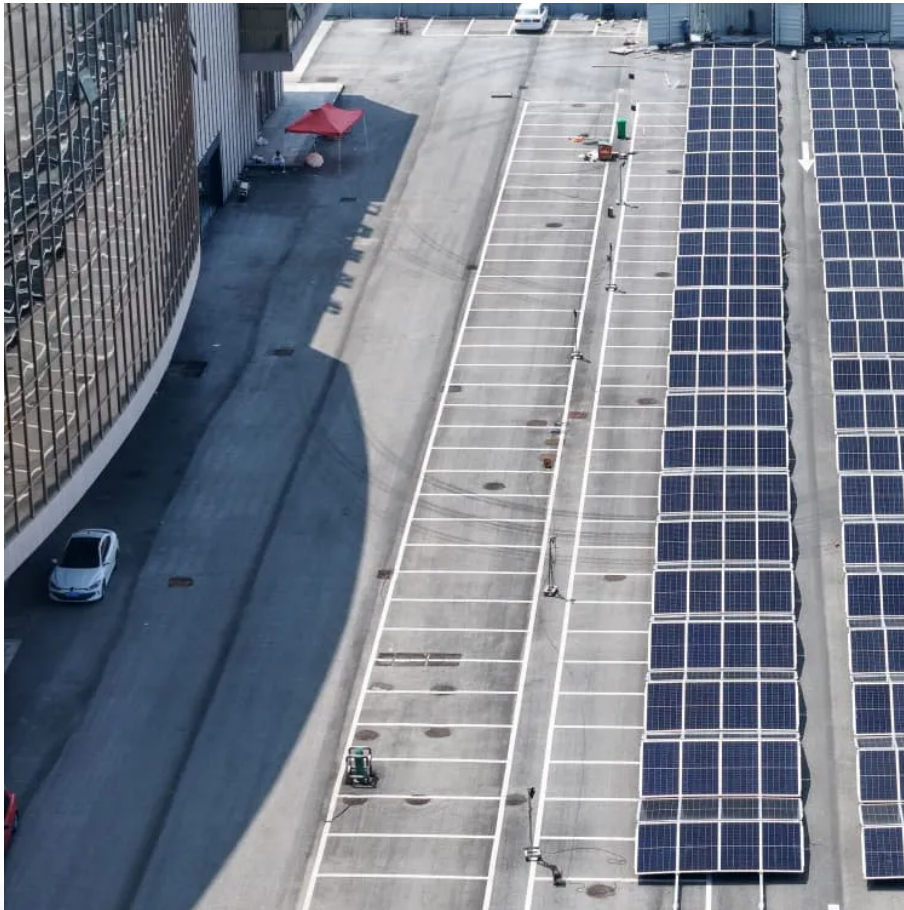


## A-Core Container

# Flywheel Energy Storage City Power Generation



## Overview

---

In 2010, Beacon Power began testing of their Smart Energy 25 (Gen 4) flywheel energy storage system at a wind farm in Tehachapi, California. The system was part of a wind power and flywheel demonstration project being carried out for the California Energy Commission. Overview Flywheel energy storage (FES) works by accelerating a rotor ( ) to a very high speed and maintaining the energy in the system as . When energy is extracted from the system, the flywheel's r.

A typical system consists of a flywheel supported by connected to a . The flywheel and sometimes motor-generator may be enclosed in a to reduce fricti.

Compared with other ways to store electricity, FES systems have long lifetimes (lasting decades with little or no maintenance; full-cycle lifetimes quoted for flywheels range from in excess of 10 , up to 10 , cycles.

## Flywheel Energy Storage City Power Generation

---

### Contact Us

---

For catalog requests, pricing, or partnerships, please visit:  
<https://www.a-core.pl>