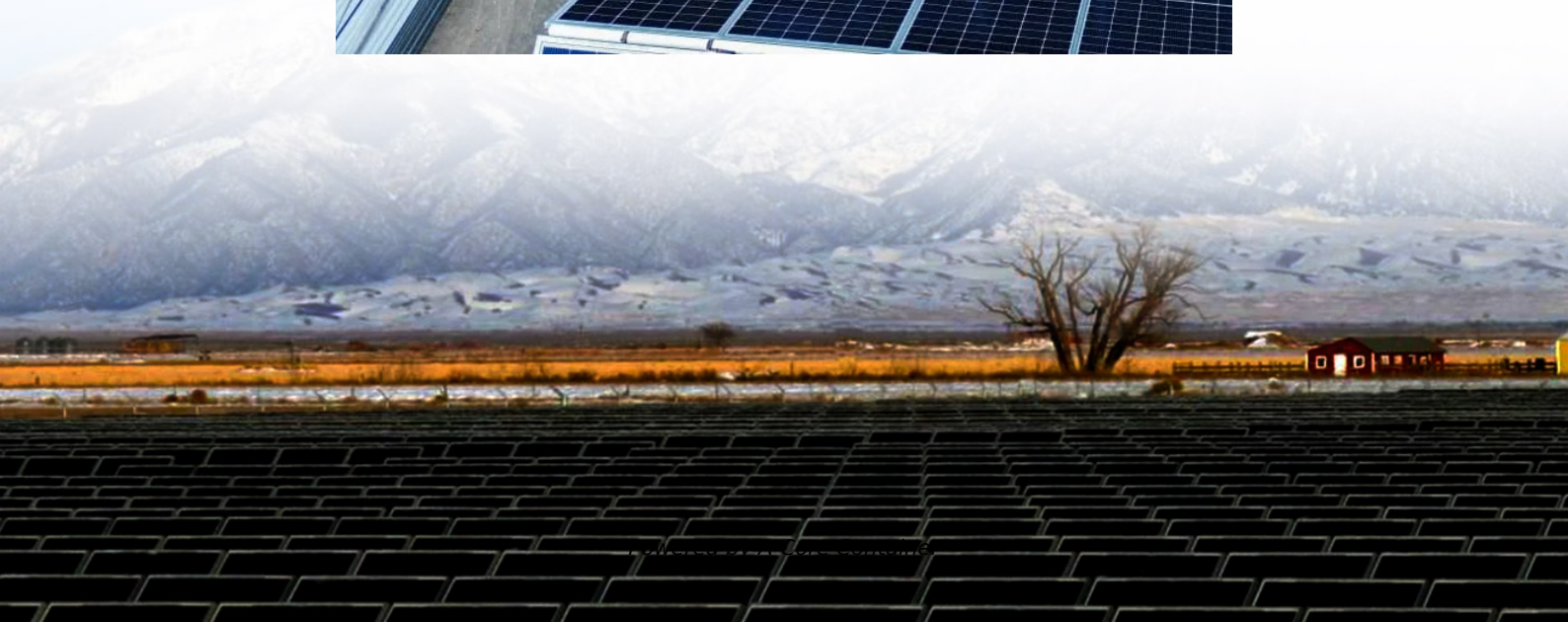


## A-Core Container

# Energy Storage Battery Electrical Clearance



## Overview

---

The Electrical Checklist is intended to be utilized as a guideline for field inspections of residential and small commercial battery energy storage systems. It can be used directly by local code enforcement officers or provided to a third-party inspection agency, where applicable.

The Electrical Checklist is intended to be utilized as a guideline for field inspections of residential and small commercial battery energy storage systems. It can be used directly by local code enforcement officers or provided to a third-party inspection agency, where applicable.

The Electrical Checklist is intended to be utilized as a guideline for field inspections of residential and small commercial battery energy storage systems. It can be used directly by local code enforcement officers or provided to a third-party inspection agency, where applicable. The Battery Energy.

According to Article 2018 IRC M1307.3, appliances that could ignite vapors must be positioned at least 18 inches off the garage floor. Does this mean that all batteries, such as those from Tesla and Solaredge, must also be placed 18 inches above the ground?

If we cannot place the batteries at this.

Code Change Summary: Many new requirements were added for battery locations in 480.9. As battery technology changes, so does the need to modify the rules pertaining to batteries in the NEC ®. The previous code language gave a general requirement for ventilation. The new 2014 code language is based.

## Energy Storage Battery Electrical Clearance

---

### Contact Us

---

For catalog requests, pricing, or partnerships, please visit:  
<https://www.a-core.pl>