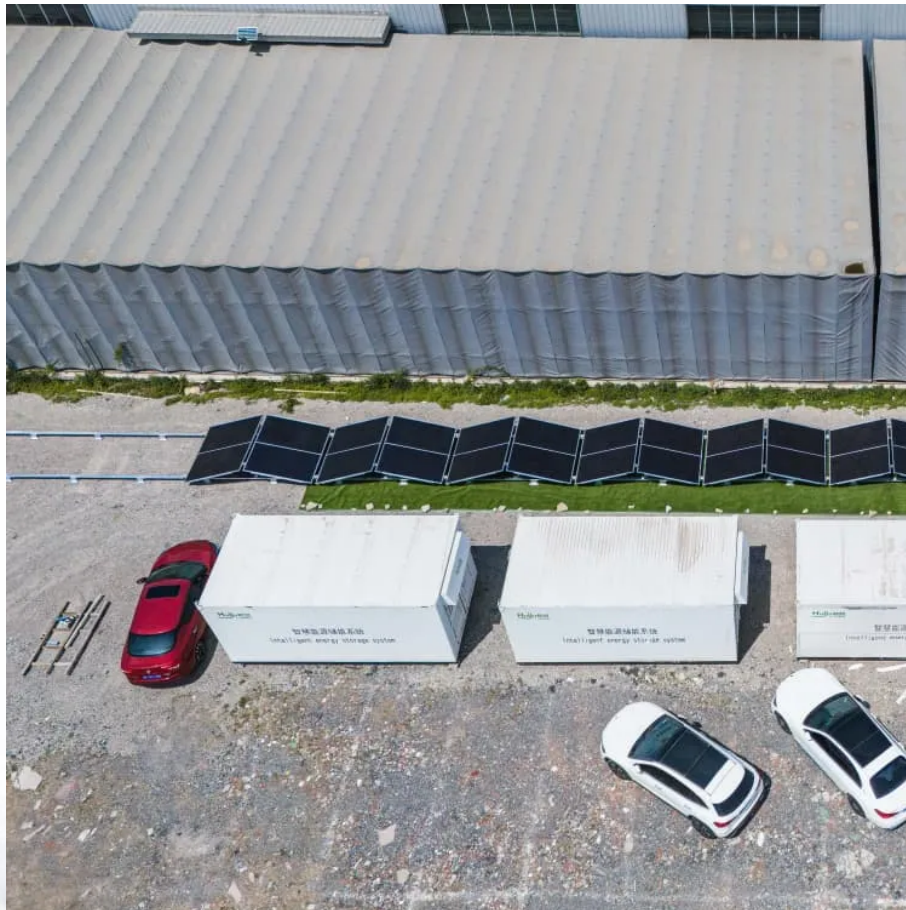


A-Core Container

Electricity consumption calculation of communication base stations



Overview

Therefore, this paper investigates changes in the instantaneous power consumption of GSM (Global System for Mobile Communications) and UMTS (Universal Mobile Telecommunications System) base stations according to their respective traffic load.

Therefore, this paper investigates changes in the instantaneous power consumption of GSM (Global System for Mobile Communications) and UMTS (Universal Mobile Telecommunications System) base stations according to their respective traffic load.

However, there is still a need to understand the power consumption behavior of state-of-the-art base station architectures, such as multi-carrier active antenna units (AAUs), as well as the impact of different network parameters. In this paper, we present a power consumption model for 5G AAUs based.

Base stations represent the main contributor to the energy consumption of a mobile cellular network. Since traffic load in mobile networks significantly varies during a working or weekend day, it is important to quantify the influence of these variations on the base station power consumption.

This thesis presents a comprehensive analysis of power consumption models of base stations. The research delves into the distribution of power consumption across different types of base stations, highlighting the significant role of power amplifiers in macro stations and baseband processing units.

Mathematical optimization of energy consumption requires a model of the problem at hand. In this thesis linear regression is compared with the gradient boosted trees method and a neural network to see how well they are able to predict energy consumption from field data of 5G radio base stations.

In this paper we developed such power models for macro and micro base stations relying on data sheets of several GSM and UMTS base stations with focus on component level, e.g., power amplifier and cooling equipment. In a first application of the model a traditional macro cell deployment and a

The first step when modeling the energy consumption of wireless communication systems is to derive models of the power consumption for the main system components, which are then combined with time-dependent traffic load models to estimate the consumed energy. This paper conducts a literature survey. What is a base station power consumption model?

In recent years, many models for base station power consumption have been proposed in the literature. The work in proposed a widely used power consumption model, which explicitly shows the linear relationship between the power transmitted by the BS and its consumed power.

How do base stations affect mobile cellular network power consumption?

Base stations represent the main contributor to the energy consumption of a mobile cellular network. Since traffic load in mobile networks significantly varies during a working or weekend day, it is important to quantify the influence of these variations on the base station power consumption.

Do base stations dominate the energy consumption of the radio access network?

Furthermore, the base stations dominate the energy consumption of the radio access network. Therefore, it is reasonable to focus on the power consumption of the base stations first, while other aspects such as virtualization of compute in the 5G core or the energy consumption of user equipment should be considered at a later stage.

Is there a direct relationship between base station traffic load and power consumption?

The real data in terms of the power consumption and traffic load have been obtained from continuous measurements performed on a fully operated base station site. Measurements show the existence of a direct relationship between base station traffic load and power consumption.

How do you calculate energy consumption of wireless communication systems?

The first step when modeling the energy consumption of wireless communication systems is to derive models of the power consumption for the main system components, which are then combined with time-dependent traffic load models to estimate the consumed energy.

What are the main energy consumers of a base station?

Of the other base station elements, significant energy consumers are: air conditioning (17.5%), digital signal processing (10%) and AC/DC conversion elements (7.5%) . terms of three levels: component, link and network. efficiency of the power amplifier. Efficiency can be improved using a specially designed power

Electricity consumption calculation of communication base stations

Contact Us

For catalog requests, pricing, or partnerships, please visit:
<https://www.a-core.pl>