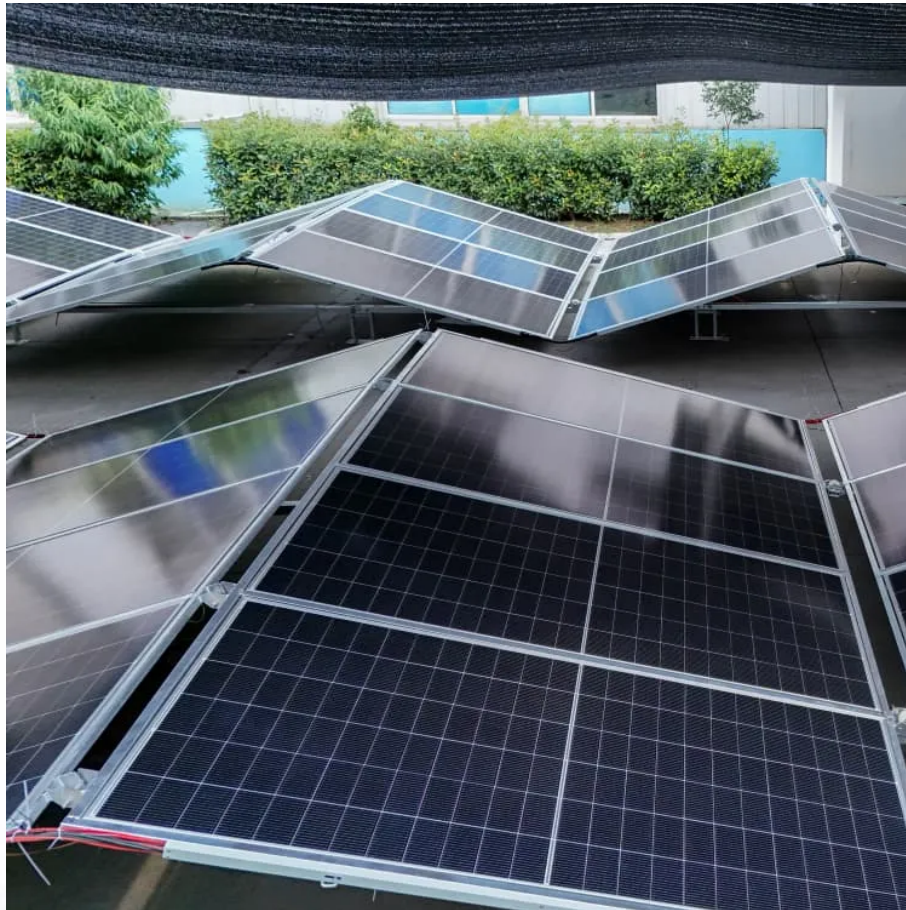


A-Core Container

El Salvador Communications 5G Base Station Power Supply



Overview

What are the components of a 5G base station?

Baseband Unit (BBU): Handles baseband signal processing. Remote Radio Unit (RRU): Converts signals to radio frequencies for transmission. Active Antenna Unit (AAU): Integrates RRU and antenna for 5G-era efficiency. 2. Power Supply System This acts as the “blood supply” of the base station, ensuring uninterrupted power. It includes:.

What is a 5G Brain Center?

Often referred to as the brain center, this includes: Baseband Unit (BBU): Handles baseband signal processing. Remote Radio Unit (RRU): Converts signals to radio frequencies for transmission. Active Antenna Unit (AAU): Integrates RRU and antenna for 5G-era efficiency. 2. Power Supply System.

What is a base station power supply?

This acts as the “blood supply” of the base station, ensuring uninterrupted power. It includes: AC distribution box: Distributes mains power and offers surge protection. Switch-mode power supply: Converts and stabilizes power while managing DC output. Battery banks: Serve as backup power to keep systems running during outages. 3.

El Salvador Communications 5G Base Station Power Supply

Contact Us

For catalog requests, pricing, or partnerships, please visit:
<https://www.a-core.pl>