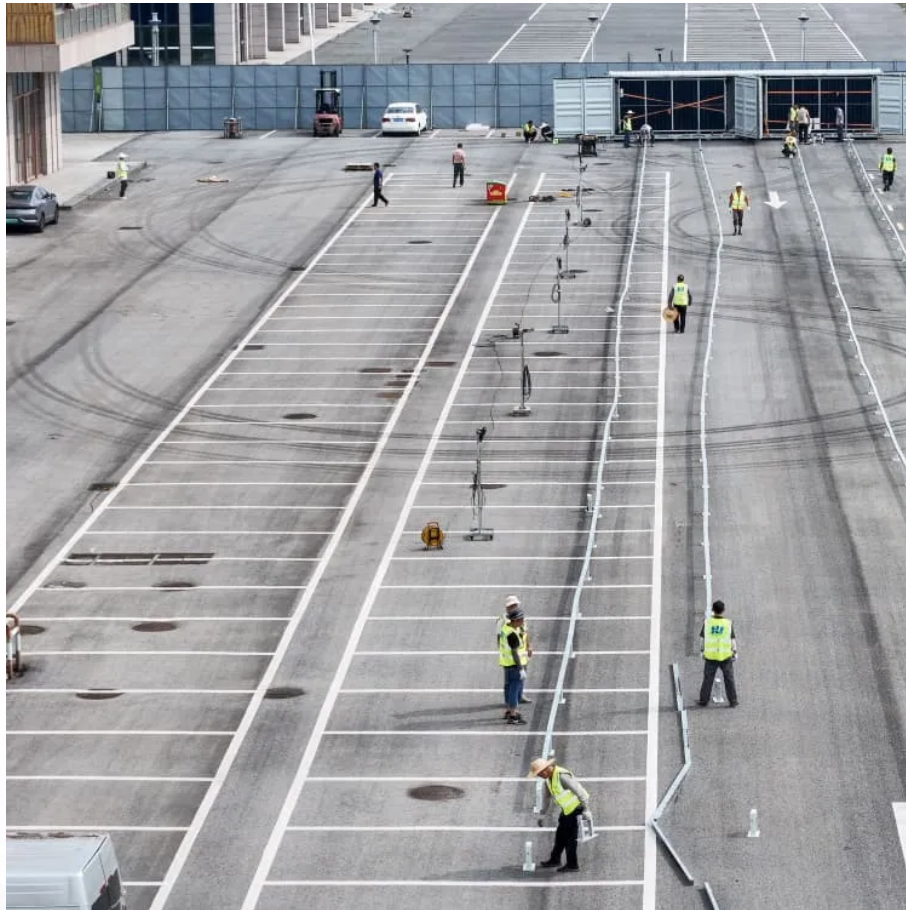


## A-Core Container

# Distributed base stations in communication networks



## Overview

---

In a distributed base station, baseband units are concentrated in a data center or network center, while RF units are distributed across multiple site locations. This architecture is also referred to as a distributed antenna system (DAS).

In a distributed base station, baseband units are concentrated in a data center or network center, while RF units are distributed across multiple site locations. This architecture is also referred to as a distributed antenna system (DAS).

The present-day tele-space is incomplete without the base stations as these constitute an important part of the modern-day scheme of wireless communications. They are referred to as cell towers or cellular antennas. These types of objects are an inevitability since they serve the purpose of.

Summary-This paper<sup>1</sup> briefly reviews the distributed communication network concept in which each station is connected to all adjacent stations rather than to a few switching points, as in a centralized system. The payoff for a distributed configuration in terms of survivability in the cases of.

A distributed base station, compared with a traditional centralized base station, separates the baseband processing unit and the RF unit and connects them via fiber or other media. In a distributed base station, baseband units are concentrated in a data center or network center, while RF units are.

We propose a concept system termed distributed base station (DBS) which enables distributed transmit beamforming at large carrier wavelengths to achieve significant range extension and/or increased downlink data rate, providing a low-cost infrastructure for applications such as rural broadband. We.

ed in close proximity to the antenna tower. This BTS connects to both the Mobile Switching Center (MSC), which directs hand-off between towers for mobile users, and the Radio Frequency (RF) transmitters/receivers antenna located on the tower structure. The “hut” at the base of the tower or in the.

Mobile communication base station is a form of radio station, which refers to a

radio transceiver station that transmits information between mobile phone terminals through a mobile communication exchange center in a certain radio coverage area. The construction of mobile communication base stations.

## Distributed base stations in communication networks

---

### Contact Us

---

For catalog requests, pricing, or partnerships, please visit:  
<https://www.a-core.pl>