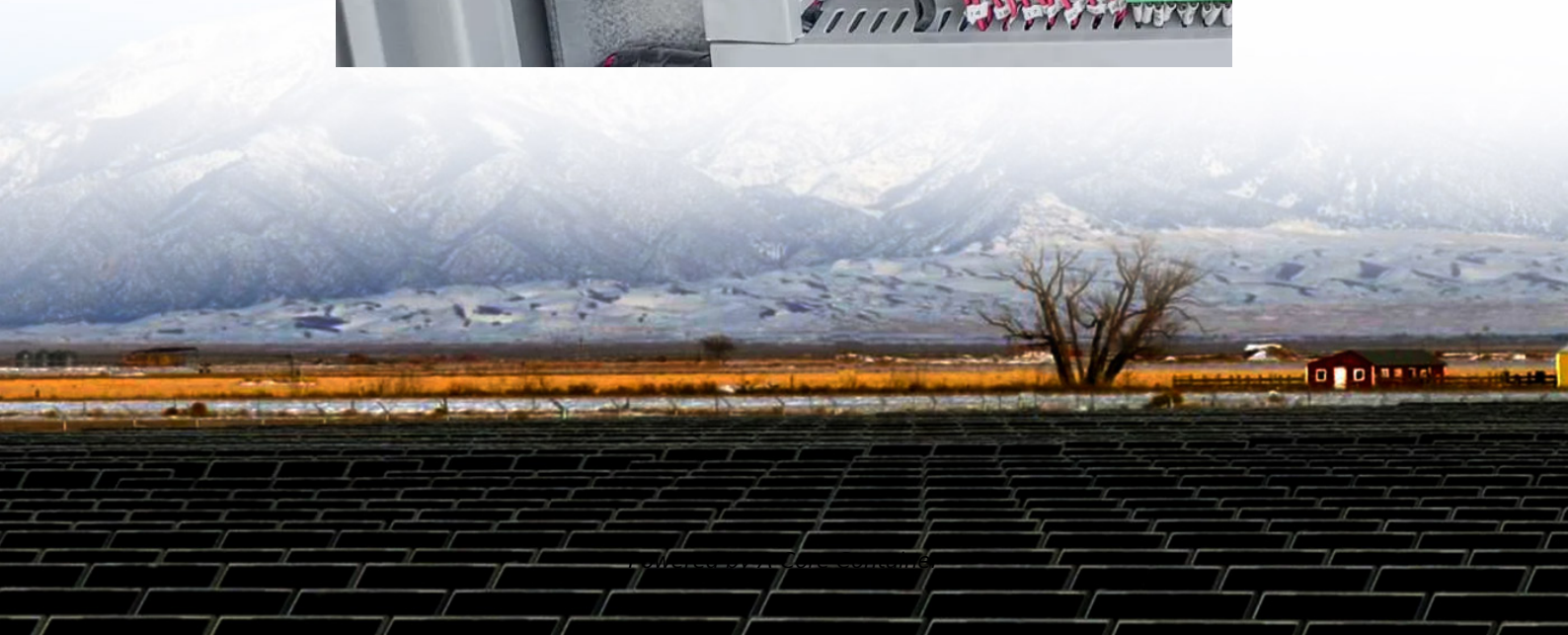
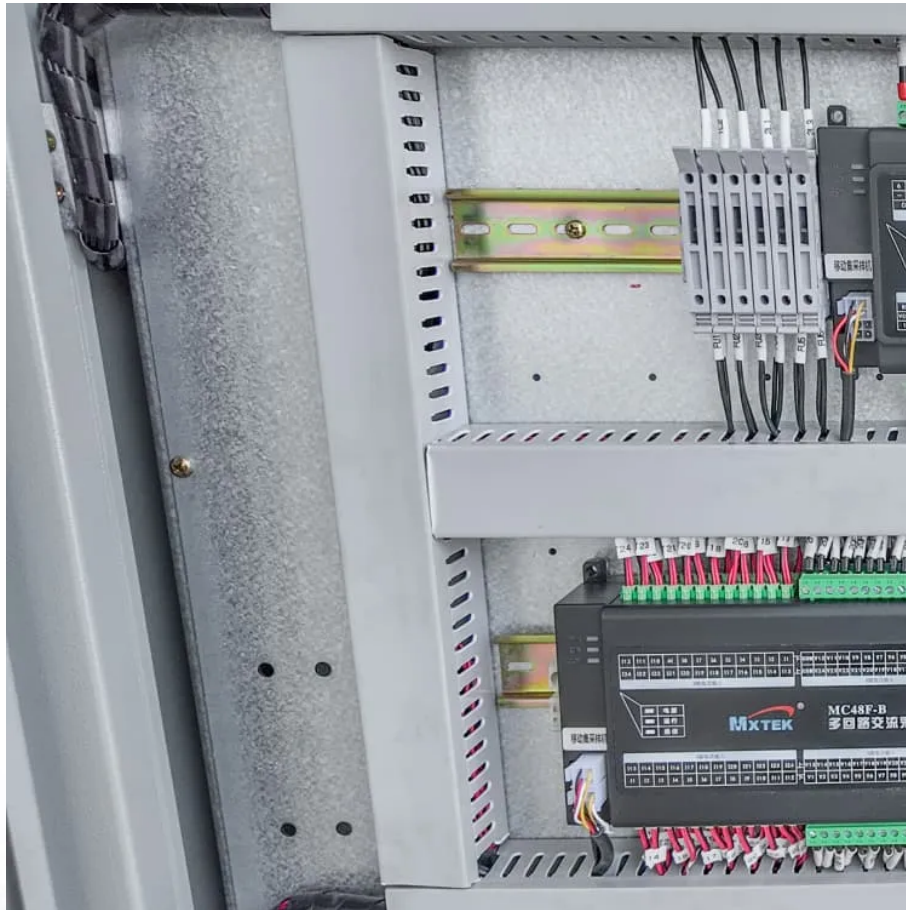


A-Core Container

Can wind power be generated by solar inverters



Overview

Fortunately, there is a solution that bridges the gap between solar and wind power integration: hybrid inverters. These advanced inverters are specifically designed to accommodate multiple renewable energy sources, including solar panels and wind turbines.

Fortunately, there is a solution that bridges the gap between solar and wind power integration: hybrid inverters. These advanced inverters are specifically designed to accommodate multiple renewable energy sources, including solar panels and wind turbines.

I have a 20kw system with 62 330w q-cells, micro inverters, Enphase Envoy combiner connected to the grid. Thanks Gary Karabocek_6776 likes this. This is an application not supported by Enphase. But it will be interesting to see what the Community can contribute. When your encharge battery supports.

Solar inverters play a crucial role in converting direct current (DC) electricity produced by solar panels into alternating current (AC) electricity suitable for use in homes and businesses. On the other hand, wind turbines are designed to capture the kinetic energy of wind and convert it into.

Integrating a solar inverter with wind energy systems involves combining two renewable energy sources to create a more efficient and reliable power generation system. This integration allows for the optimization of energy production by harnessing solar power during sunny periods and wind energy.

How to Connect a Wind Turbine to a Solar Inverter?

The inverter is a key device that converts direct current from solar or wind power into alternating current. If you want to connect wind modules and photovoltaic modules to the same inverter, you need to choose an inverter that meets the following.

My question is simplistic as it gets in the sense that I wanted to know if I can connect a wind power turbine into my existing inverter. I have 10 200w panels running on a Growatt 4200MTL inverter that has 2 MTPP inlets. As I am

thinking if I got a 1000W or 2000W wind turbine, which then still.

Hybridizing solar and wind power sources (min wind speed 4-6m/s) with storage batteries to replace periods when there is no sun or wind is a practical method of power generation. This is known as a wind solar hybrid system. The wind solar hybrid system generates a stand-alone energy source that is. Can a wind turbine be used as a solar inverter?

If your inverter lacks this capacity, you'll need to replace it with a hybrid inverter that can take power from auxiliary sources, as well as your solar panels and battery. The best way to include your wind turbine into an existing solar system is by using the same wiring system.

How does a solar inverter integrate with a wind energy system?

Integrating a solar inverter with wind energy systems involves combining two renewable energy sources to create a more efficient and reliable power generation system. This integration allows for the optimization of energy production by harnessing solar power during sunny periods and wind energy during breezy conditions.

Can I add a wind turbine to my solar system?

Most domestic solar systems use hybrid solar inverters that can use power either from solar panels or battery storage. Our inverter can also take power from an auxiliary source which, at present, is our backup generator. To add a wind turbine into our system, we can use our existing inverter by adding the turbine as a new auxiliary power source.

Can a wind turbine run with a solar panel system?

There are four ways to combine a wind turbine with a solar panel system. You can connect a wind turbine to an inverter if it has the same voltage and has a DC output. Inverters convert DC to AC, so if the wind turbine already produces AC power it may not run with the inverter. This may or may not be the case.

How to attach a wind turbine to a solar inverter?

To attach a wind turbine to a solar inverter there are four easy ways: You have to fix the turbine on the solar energy system. Next, attach the device to the right voltage solar battery. You have to install your turbine with a high voltage battery. And fix the device to an off-grid solar panel. However, you should not try to do these yourself.

Are solar inverters compatible with wind energy systems?

Another significant challenge in integrating solar inverters with wind energy systems is the difference in the operational characteristics of the two technologies. Solar inverters typically convert direct current (DC) generated by solar panels into alternating current (AC) for use in the grid, while wind turbines generate AC directly.

Can wind power be generated by solar inverters

Contact Us

For catalog requests, pricing, or partnerships, please visit:
<https://www.a-core.pl>