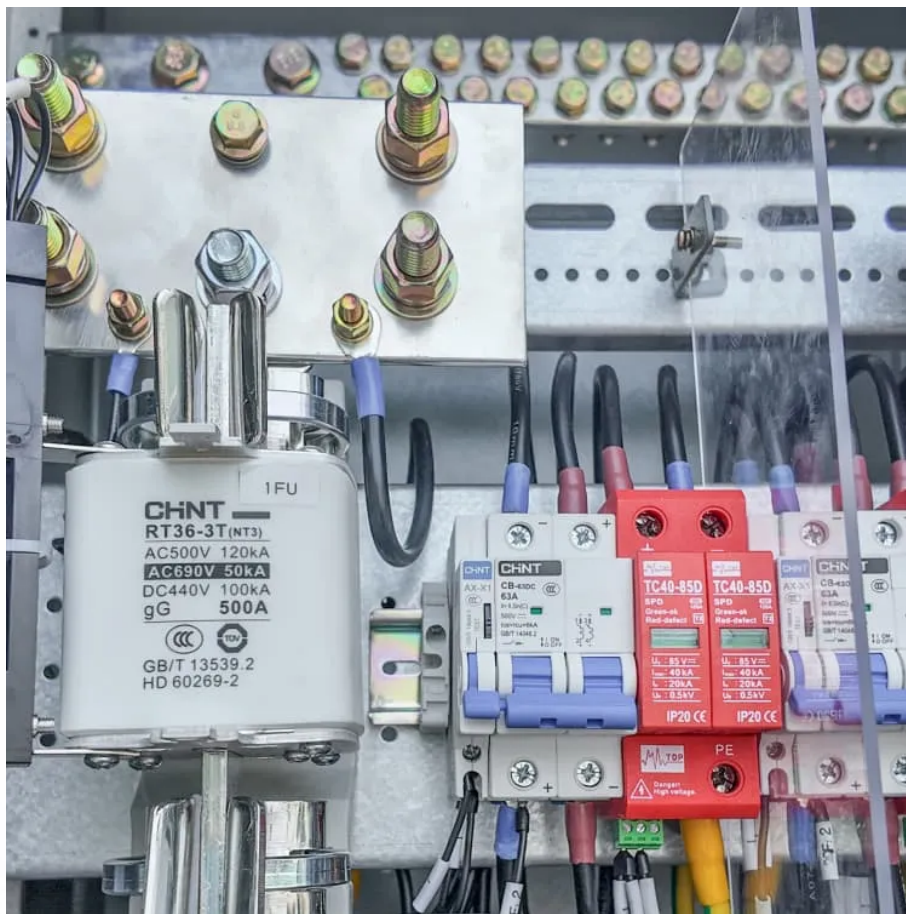


A-Core Container

Can a 48v inverter use 12v



Overview

Connecting a 12V battery directly to a 48V inverter will not work because the inverter requires at least 48 volts to operate. Do I need a 12V inverter?

To do this, you need to connect an inverter to the battery bank. It is important to match the battery bank voltage with an inverter that can handle that same voltage. Simply put, if you have a 12V system, you need a 12V inverter; a 48V system requires a 48V inverter. Standard Pure Sine Wave inverters simply change DC power to AC power.

Can a 48 volt inverter run a battery?

When you use a 48-Volts inverter, you can use regular and more flexible connectors to connect the inverter to the battery bank. This is so because the thinner the wire, the higher the resistance. And if your DC voltage is lower, you will pass more current through the wires, and they can get very hot, and you lose a lot of battery power.

Do 48V power inverters work?

48V power inverters work perfectly in 48V solar systems, which are usually either small commercial or large residential. These inverters are typically paired with 48V PV modules and batteries of a comparable voltage.

Can a 48 volt solar panel be used with a 12V inverter?

Nowadays, big houses, especially off-grid, tend to use 48 volt solar panels. Keep in mind that your inverter has to be compatible with the voltage of this system to be used. A 48V solar panel can be used with a 12V system if you choose the right equipment for it — a controller and an inverter.

Is 48V better than 12V?

Answer: 48v is better than 12v inverters. 48v inverters can output 4 times the amount of electricity for almost the same price as the 12v models. Also, in general 48v devices on average are a couple percentage points higher in

efficiency than their 12v counterparts. Is 48V More Efficient Than 24V?

.

Should I use a 24 volt or 48 volt inverter?

I suggest you use A 24-volt inverter or 36-volt inverter or 48-volt inverter when you need to power appliances over 3000 Watts. You may decide to use them even for appliances that are 2000Watts. When you use a 48-Volts inverter, you can use regular and more flexible connectors to connect the inverter to the battery bank.

Can a 48v inverter use 12v

Contact Us

For catalog requests, pricing, or partnerships, please visit:
<https://www.a-core.pl>