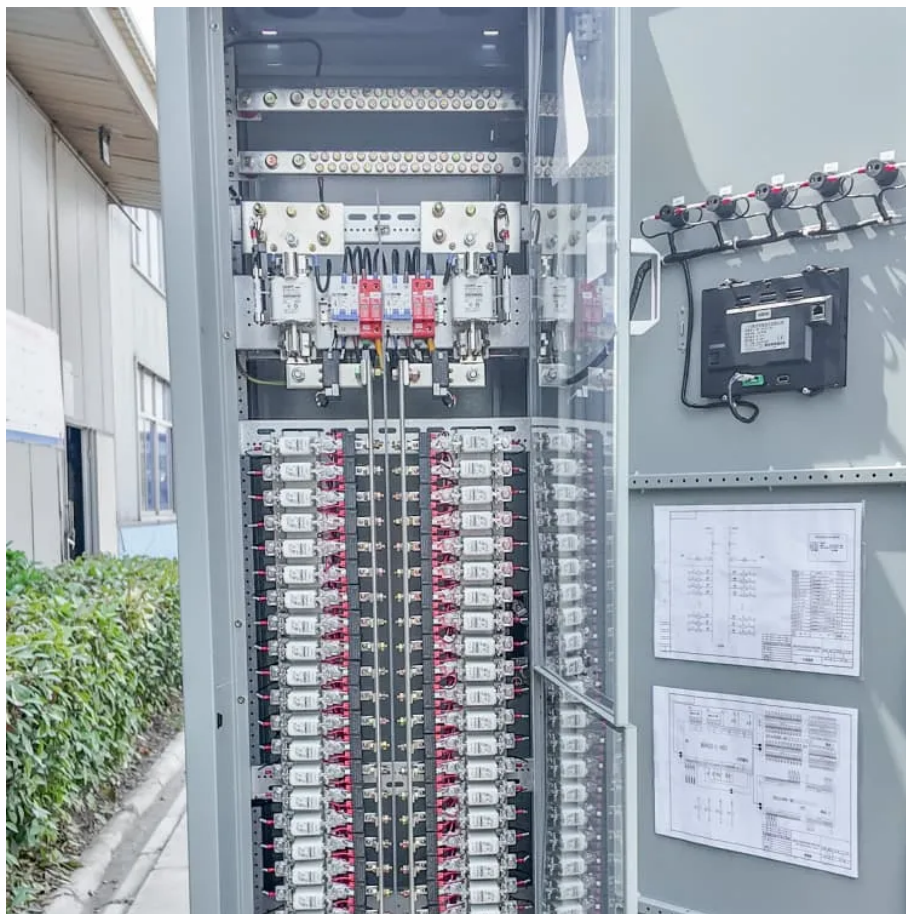


A-Core Container

Area and power of solar panels



Overview

Use our free Solar Energy Calculator to find how much power your panels can generate daily, monthly, or yearly. Simple, accurate, and beginner-friendly.

Use our free Solar Energy Calculator to find how much power your panels can generate daily, monthly, or yearly. Simple, accurate, and beginner-friendly.

The total area needed for solar panel installation is vital for effective PV system design and planning. Accurate area estimation ensures optimal panel placement, maximizes energy harvest, and prevents shading or structural conflicts. Tip: $\text{Gross area} = \text{Net module area} \times \text{Layout factor}$ (accounts for.

Home solar panels are a great way to gain energy independence and reduce your utility bills and carbon footprint. However, they also require a significant amount of space. If you want to go solar, it's critical to determine how much area is needed for your solar panels when planning an.

The idea of switching to solar energy is incredibly attractive for its environmental benefits and cost savings. But before you dive in as a homeowner or business owner, there are many factors to consider. Several elements will influence the installation of a solar system. Important factors include.

Area and power of solar panels

Contact Us

For catalog requests, pricing, or partnerships, please visit:
<https://www.a-core.pl>