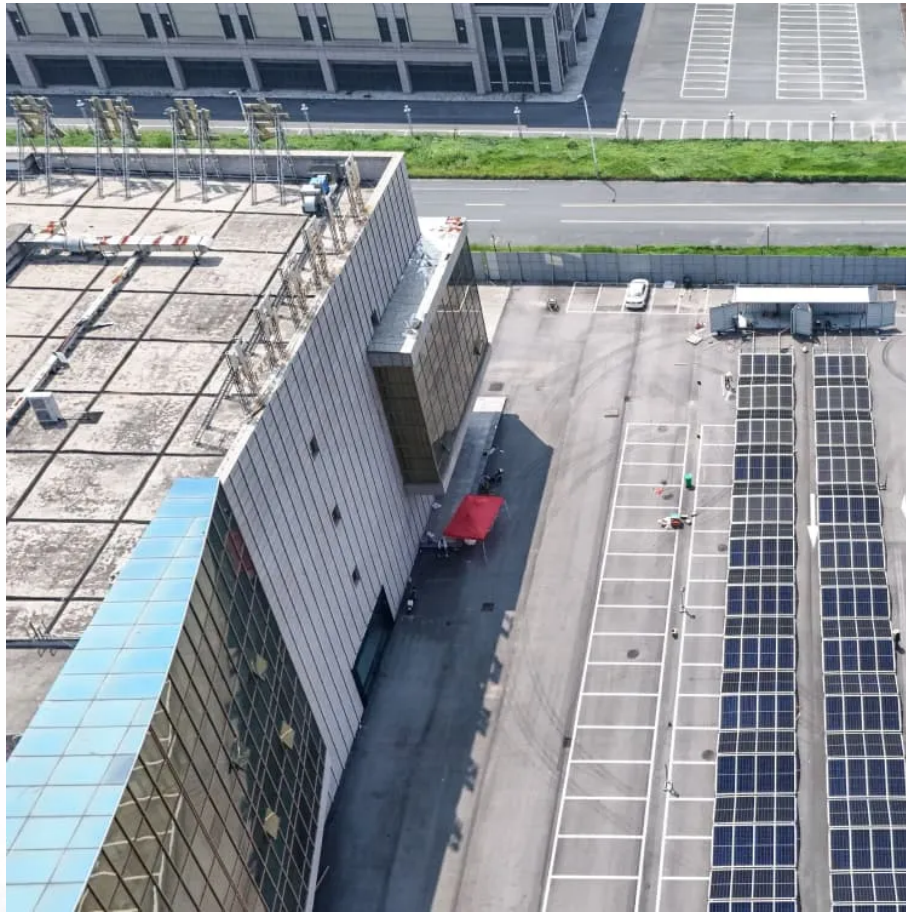


A-Core Container

540 bifacial double-glass module efficiency



Overview

High Power Output: 540W nominal power and 21.0% module efficiency under standard test conditions (STC). Bifacial Rear-Side Gain: Up to 25% additional output (675W max), reducing LCOE and increasing energy yield.

High Power Output: 540W nominal power and 21.0% module efficiency under standard test conditions (STC). Bifacial Rear-Side Gain: Up to 25% additional output (675W max), reducing LCOE and increasing energy yield.

Rayzon Solar is an internationally renowned leading solar energy cost effective benefiting solutions provider having core competency in high efficiency PV module manufacturing and providing EPC solution. Rayzon PV modules are the best in class in terms of power output and long-term reliability. ELECTRICAL.

The SolarSpace SS8-72HD-540M is a bifacial dual-glass solar module featuring Mono PERC M10 half-cut cells and advanced encapsulation for superior output. Delivering 540W front-side power and up to 675W with bifacial rear-side gain, it's ideal for utility-scale projects seeking high ROI and.

Module Type Maximum Power at STC (Pmax) Optimum Operating Voltage (Vmp) Optimum Operating Current (Imp) Max. System Voltage Operating Temperature Max. Fuse Rated Current Front Static Load Back Static Load Bifaciality Pmax uncertainty value at STC is $\pm 3\%$.

JA D30 Series bifacial modules are assembled with 11BB PERCIUM cells in half cut configuration with glass on front and back. D30 series modules have a slightly larger footprint than D10 series. Module cables are also 1300mm (slightly longer than previous series). Key Features - Assembled with.

Assembled with 11BB bifacial PERCIUM cells and gapless ribbon connection technology, these double glass modules have the capability of converting the incident light from the rear side together with the front side into electricity, providing higher output power, lower temperature coefficient, less.

30 Years linear power warranty Nominal Max. Power(Pmax/W) Nominal Max. Power(Pmax/W) Nominal Max. Power(Pmax/W) Nominal Max. Power(Pmax)

Max. System Voltage Max. Fuse Rated Current Version number: DAS-
MP-017-A23.V13 All data contained in this datasheet is subject to change
without notice. The right.

540 bifacial double-glass module efficiency

Contact Us

For catalog requests, pricing, or partnerships, please visit:
<https://www.a-core.pl>