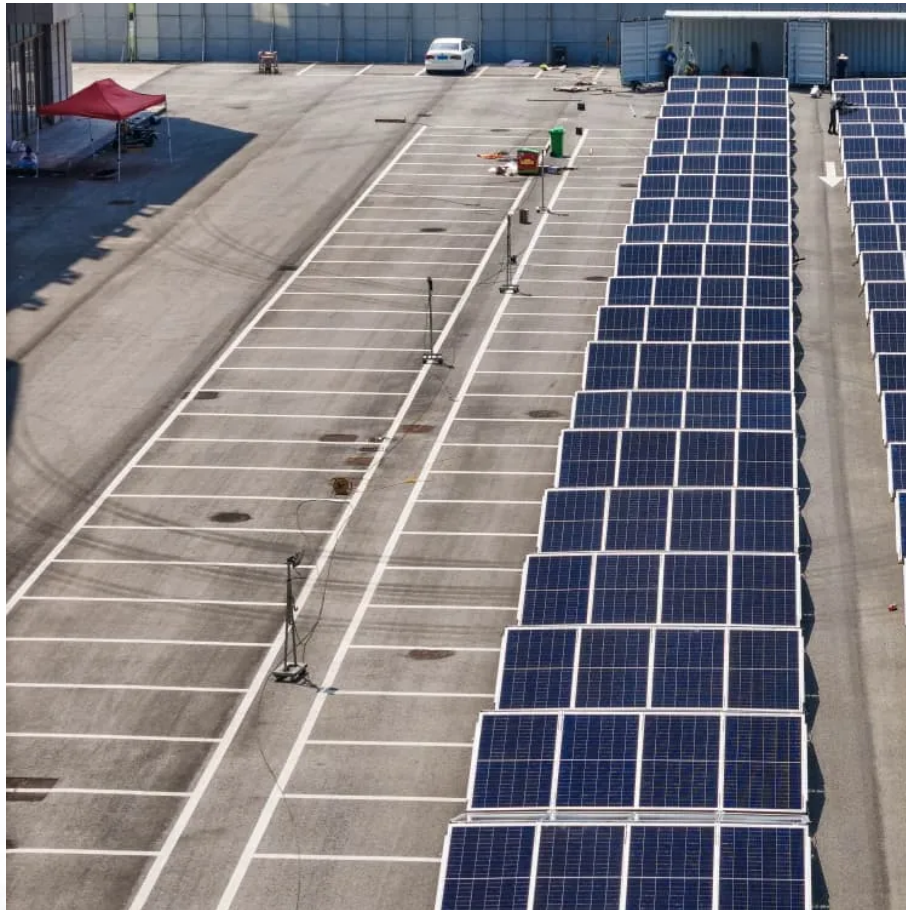


A-Core Container

48v lithium battery pack voltage



Overview

The nominal voltage of a 48V LiFePO₄ battery pack is typically around 51.2V (16 cells × 3.2V each). When fully charged, the voltage can reach up to 58.4V.

48v lithium battery pack voltage

Contact Us

For catalog requests, pricing, or partnerships, please visit:
<https://www.a-core.pl>