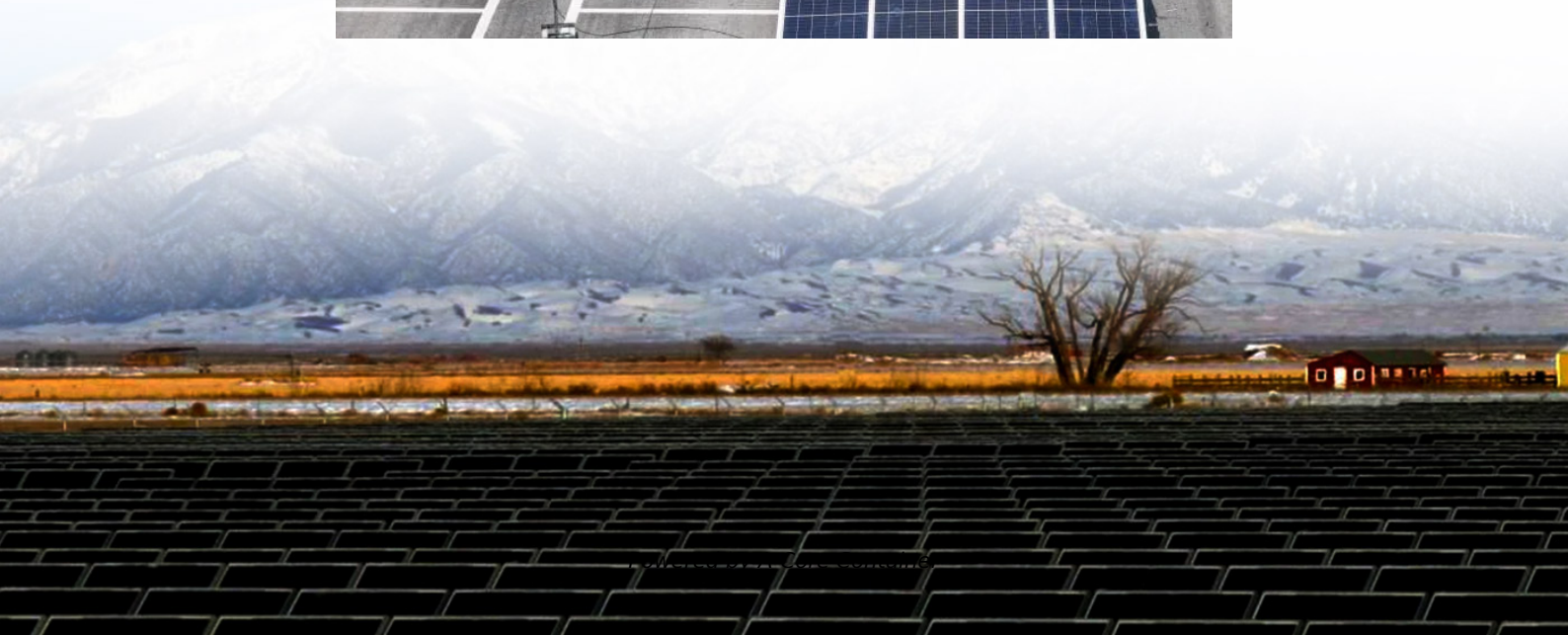
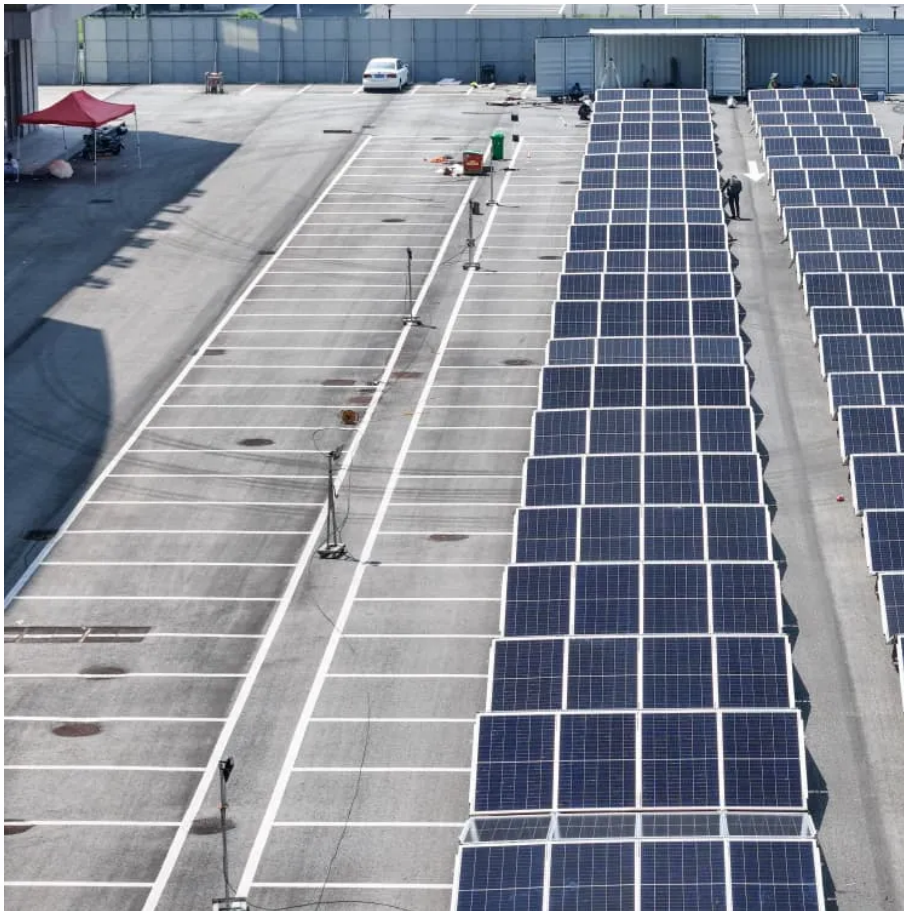


A-Core Container

40W Solar Dimensions



Overview

A 40 W panel is an efficient solution for small-scale energy needs. Its compact size of approximately 26 x 22 x 1.2 inches and weight that's around 8 lbs make it a convenient on-the-go source of energy.

A 40 W panel is an efficient solution for small-scale energy needs. Its compact size of approximately 26 x 22 x 1.2 inches and weight that's around 8 lbs make it a convenient on-the-go source of energy.

in short, On average a 40-watt solar panel will produce 160-200 watt-hours of power in a full day 40w solar panels are designed to produce 40 watts of power per hour under standard test conditions (STC) which include radiation of 1 kW/m², a cell temperature of 25°C, and no wind But in the real.

Our range of solar panels are constructed from ultra-efficient polycrystalline and have been designed to provide a reliable and cost-effective alternative energy solution for applications where mains power is either not available, or not desirable.

Example: 5kW solar system is comprised of 50 100-watt solar panels. Alright, your roof square footage is 1000 sq ft. Can you put a 5kW solar system on your roof?

For that, you will need to know what size is a typical 100-watt solar panel, right?

To bridge that gap of very useful knowledge needed.

A 40 W panel is an efficient solution for small-scale energy needs. Its compact size of approximately 26 x 22 x 1.2 inches and weight that's around 8 lbs make it a convenient on-the-go source of energy. Understanding the cost implications of installing a 5 kW solar system can help homeowners make.

Utilising Mono/ Polycrystalline technology, this 40W module is a staggeringly efficient solar panel. We strive to supply our customers with the most efficient photo voltaic technology available in the market at any given time. This 40W

Mono/Polycrystalline solar panel has an estimated lifespan of.

Maximum Power (W) 40W Optimum Power Voltage (Vmp) 18.21V Optimum Operating Current (Imp) 2.20A Open Circuit Voltage (Voc) 21.83V Short Circuit Current (Isc) 2.40A Mechanical Characteristics Cell Type Mono-crystalline 125×62.5mm No of Cell 36 (4x9pcs) Dimensions 636x554x25mm Weight 4.2Kg Front Glass.

40W Solar Dimensions

Contact Us

For catalog requests, pricing, or partnerships, please visit:
<https://www.a-core.pl>