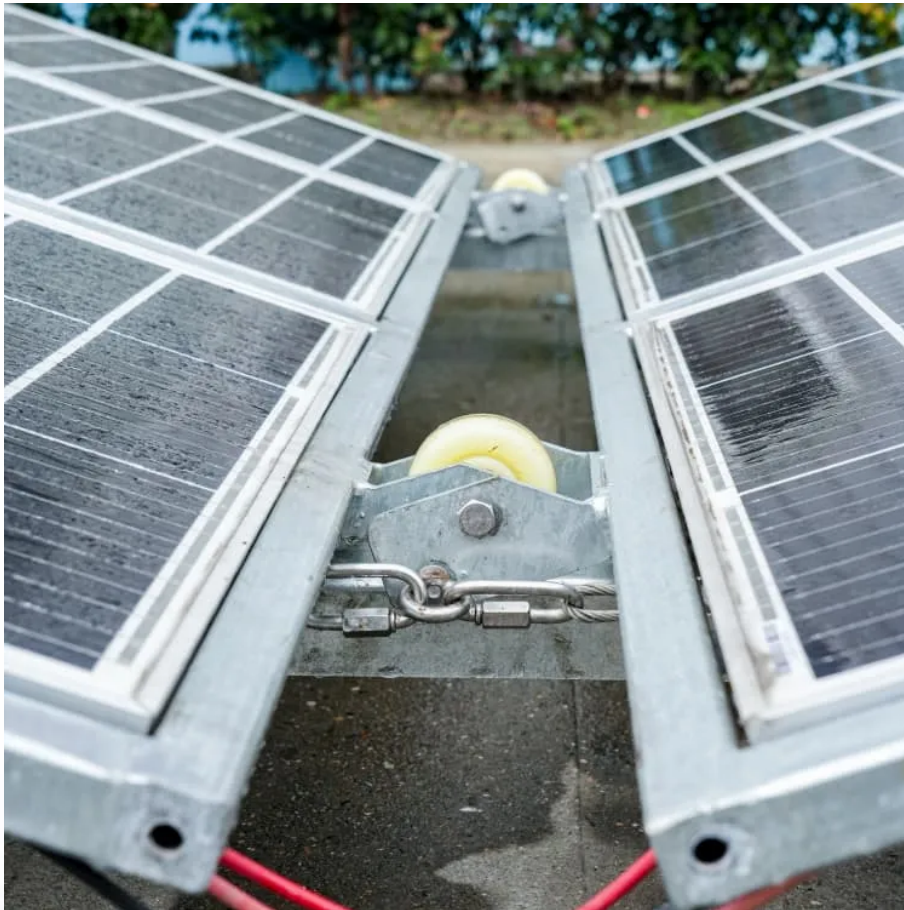


## A-Core Container

# 220v inverter maximum output power



## Overview

---

How many watts is a 120 volt inverter?

pass-thru current must be no greater than 30 amps per leg or damage to the relays may occur. 1 amp at 120 volts is 10 amps at 12 volts. Same the other way around. Both = 120 watts. An inverter will need 160 amps at 12 volts to create 16 amps at 120 volts. Plus some loss in conversion. Volts times amps = watts.

What are the advantages of a 12V to 220V inverter?

Sufficient power: When the rated load power equal to or less than inverter power, the inverter will not produce overload protection and can go on working. Good safety performance: The 12v to 220v inverter features in short-circuit, overload, overvoltage, under-voltage, over-temperature protections.

What are inverter specifications?

Specifications provide the values of operating parameters for a given inverter. Common specifications are discussed below. Some or all of the specifications usually appear on the inverter data sheet. Maximum AC output power This is the maximum power the inverter can supply to a load on a steady basis at a specified output voltage.

How many watts is a 12 volt inverter?

An inverter will need 160 amps at 12 volts to create 16 amps at 120 volts. Plus some loss in conversion. Volts times amps = watts. Watts are watts no matter what the volts or amps are. Your inverter will output 3300 watts for 5 seconds, most do have starting and operating ratings. If the breaker is a little weak that would trip it.

How many amps does a magnum inverter use?

I have a Magnum Energy Inverter/Charger Model MS2000. Its spec sheet says that the "Output power continuous watts" is 2000 which converts to 16.67 AC

amps. However my inverter box has a 30 amp breaker on it and it has tripped twice when I tried to use over 30 amps.

How much power does an inverter need?

It's important to note what this means: In order for an inverter to put out the rated amount of power, it will need to have a power input that exceeds the output. For example, an inverter with a rated output power of 5,000 W and a peak efficiency of 95% requires an input power of 5,263 W to operate at full power.

## 220v inverter maximum output power

---

## Contact Us

---

For catalog requests, pricing, or partnerships, please visit:  
<https://www.a-core.pl>