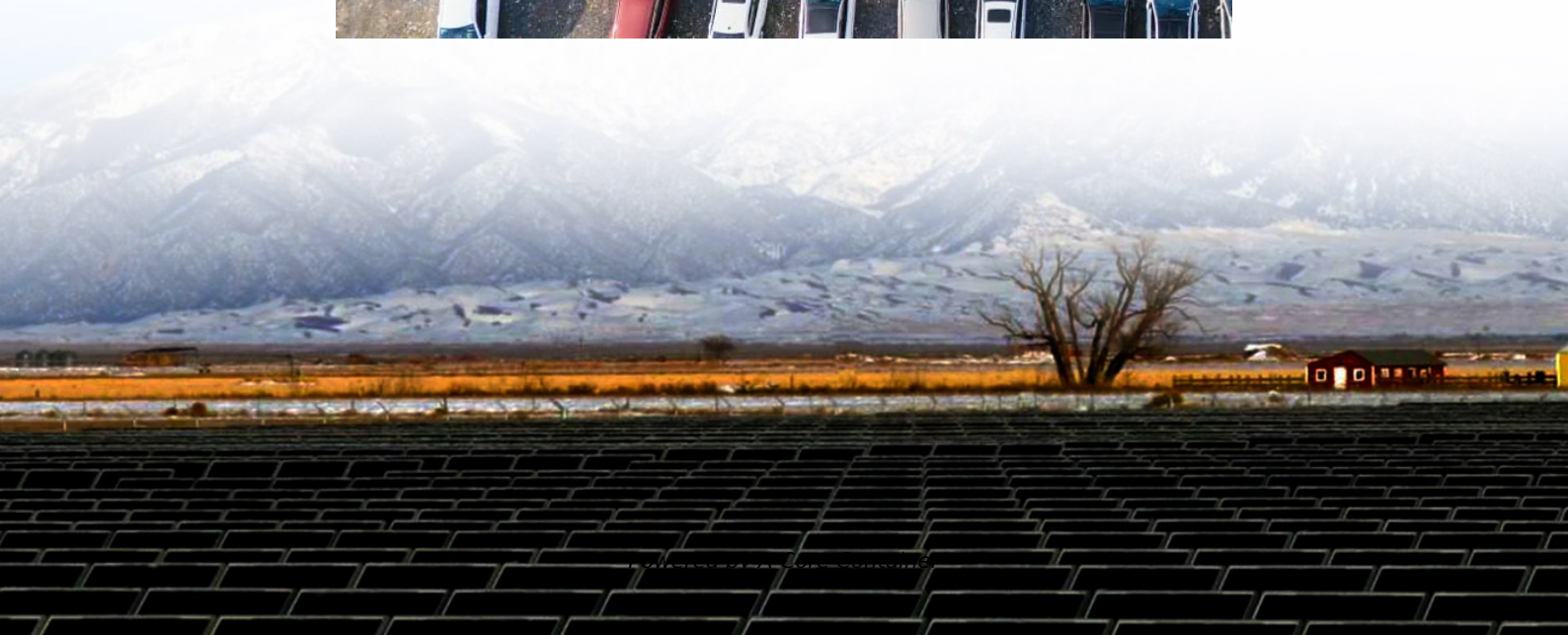
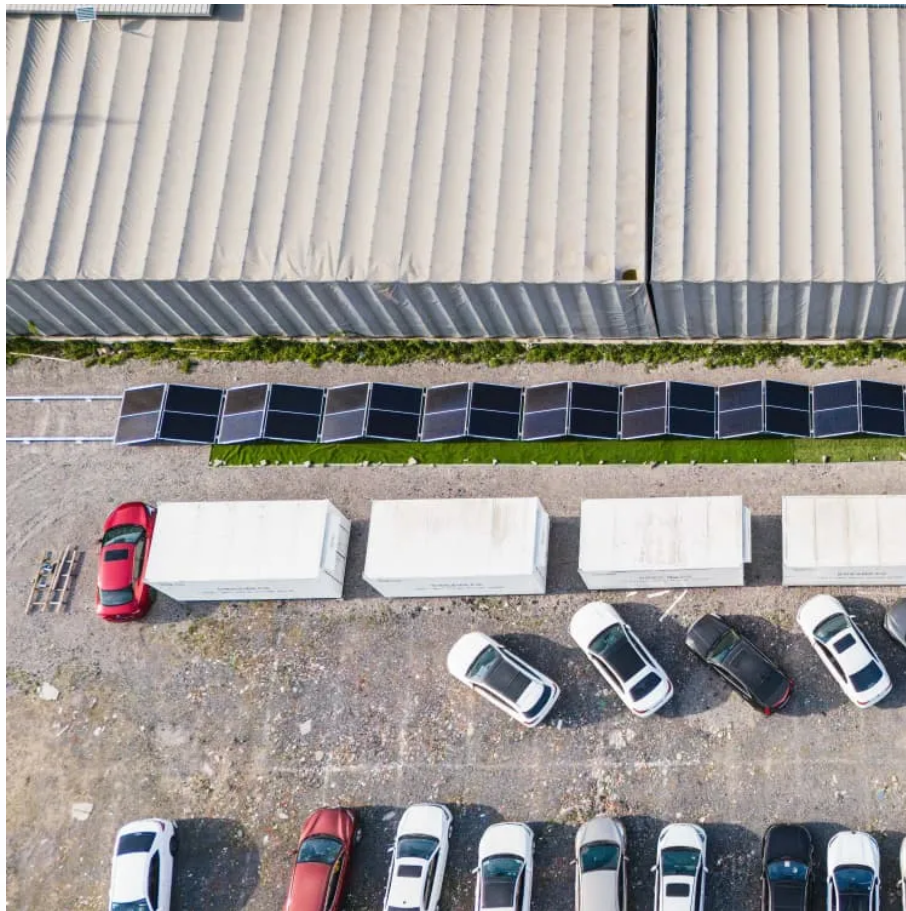


## A-Core Container

# 15 kWh home energy storage



## Overview

---

In the rapidly growing lithium ion battery industry, 15kWh home energy storage systems have become the benchmark. From Tesla Powerwall 2 to Enphase IQ Battery 10T, this size is not a coincidence—it represents the perfect balance of economics, engineering, and real.

In the rapidly growing lithium ion battery industry, 15kWh home energy storage systems have become the benchmark. From Tesla Powerwall 2 to Enphase IQ Battery 10T, this size is not a coincidence—it represents the perfect balance of economics, engineering, and real.

A 15kWh (kilowatt-hour) battery stores enough energy to theoretically deliver 15 kilowatts of power for 1 hour, 5 kilowatts for 3 hours, or any combination in between. However, real-world performance depends on three key factors: Let's dive deeper. If the grid goes down, most homeowners prioritize.

Our 15kWh home energy storage systems are designed to revolutionize energy management in residential settings. With a capacity of 15kWh, these systems allow homeowners to store energy efficiently, ensuring that power is available even during outages or peak demand times. The advanced lithium-ion.

While traditional households still rely on the grid's fluctuating power supply, an integrated energy solution combining power generation, storage, and smart management has quietly emerged — the 15kWh home solar energy storage system. This system is not merely a simple “solar panels + batteries”.

Ever wondered why your neighbor's solar panels still work during a blackout?

The secret sauce is 15 kWh electricity storage systems - the Goldilocks solution for modern energy needs. Not too big, not too small, this capacity range is quietly revolutionizing how we power homes, businesses, and even.

In the rapidly growing lithium ion battery industry, 15kWh home energy storage systems have become the benchmark. From Tesla Powerwall 2 to

Enphase IQ Battery 10T, this size is not a coincidence—it represents the perfect balance of economics, engineering, and real household energy needs. Average.

As renewable energy adoption accelerates, the 15kWh LiFePO4 battery has emerged as a cornerstone for solar storage and off-grid power systems. Combining high capacity, safety, and longevity, this lithium iron phosphate (LiFePO4) technology is ideal for homes, RVs, and businesses. This guide breaks.

## 15 kWh home energy storage

---

## Contact Us

---

For catalog requests, pricing, or partnerships, please visit:  
<https://www.a-core.pl>